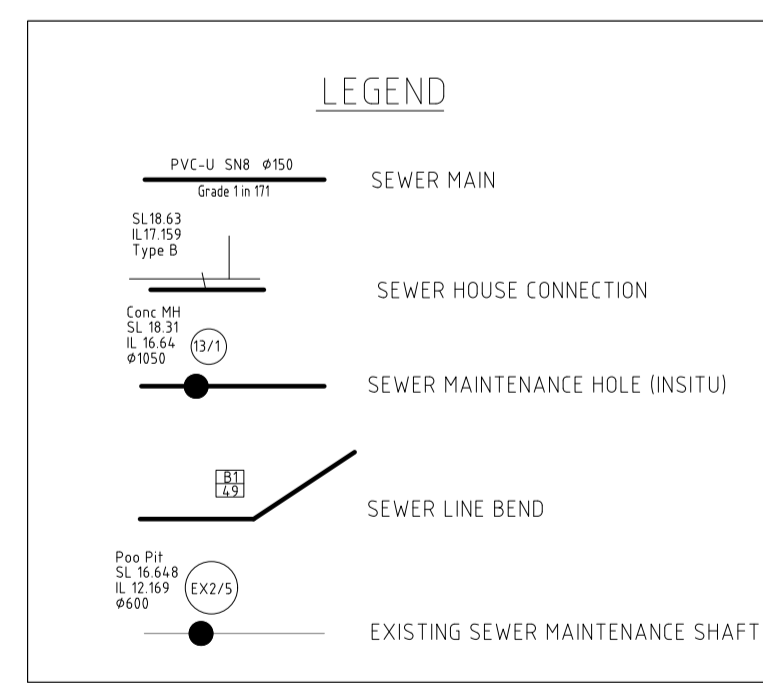




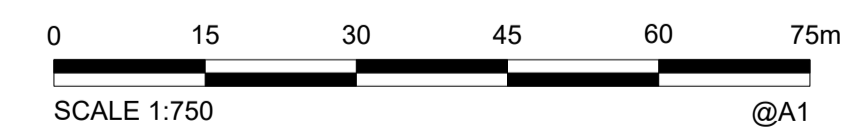
Registered Surveyor's Certification  
 We, VERIS AUSTRALIA P/L, hereby certify that the horizontal and vertical locations, and dimensions shown on this plan are a true and correct record of the As Constructed information.  
 Signed: \_\_\_\_\_ Cadastrial Surveyor Reg No. 6448  
 Dated: \_\_\_\_\_ & Deputee

**ENGINEER'S CERTIFICATION**  
 I, \_\_\_\_\_, hereby certify that:  
 1. The information contained in this drawing / document is in compliance with approved drawings and design.  
 2. The new water and sewerage works defined by this drawing have been designed and constructed in accordance with the SEQ Code.  
 3. This represents an accurate record of as-constructed works.  
 4. I accept responsibility for the information contained in this drawing / document.  
 RPEQ (signature) RPEQ No. \_\_\_\_\_ Date: \_\_\_\_\_



NOTES:  
 • ALL PROPERTY CONNECTIONS ARE Ø100 uPVC-U S100

**COORDINATE DATUM NOTE:**  
 HORIZONTAL COORDINATES(E,N) SUPPLIED ARE MAPPING GRID OF AUSTRALIA(MGA), ZONE 56 BASED ON THE UNIVERSAL TRANSVERSE MERCATOR PROJECTION AND THE GEOCENTRIC DATUM OF AUSTRALIA 1994.  
 HORIZONTAL DATUM DERIVED FROM PM33280, E 492232.092, N 7002357.242.  
 LEVELS SUPPLIED ARE ON THE AUSTRALIAN HEIGHT DATUM(AHD)  
 LEVEL DATUM DERIVED FROM PSM108673 RL 17.338 (AHD)



**AS CONSTRUCTED**

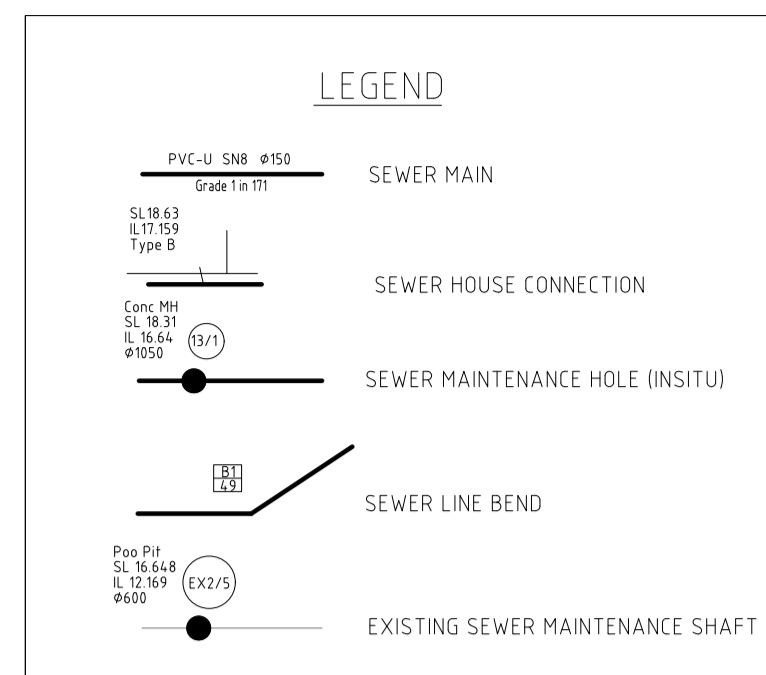
<b>A1</b>	E	10/02/2025	PROGRESS PLOT	JMc					
	D	24/01/2025	PROGRESS PLOT	JMc					
	C	17/12/2024	PROGRESS PLOT	JMc					
	B	26/09/2024	PROGRESS PLOT	JMc					
	A	27/08/2024	PROGRESS PLOT	JMc					
	INDEX	DATE	REVISIONS	DRAWN	CHECKED	PASSED	INITIALS	DATE	

CONSULTING SURVEYOR  
**veris**  
 BRISBANE WHITSUNDAYS  
 (07) 3666 4700 (07) 4945 0600  
 MACKAY CAIRNS  
 (07) 4997 9700 (07) 4252 9400  
 veris.com.au  
 ACN 615 735 727  
 Veris Australia Pty Ltd



**Unitywater**  
 OW NUMBER TBC  
 LILYWOOD LANDINGS  
 STAGE 23  
 AS CONSTRUCTED SEWER

SHEET 1 OF 4 SHEETS	SCALE 1:750
REVISION DATE 10/02/2025	REVISION E
DISCIPLINE CODE C	
DRAWING NO. 401871-23-AS01	



NOTES  
 • ALL PROPERTY CONNECTIONS ARE Ø100 uPVC-U SNI10



**ENGINEER'S CERTIFICATION**

I, \_\_\_\_\_, hereby certify that:

- The information contained in this drawing / document is in compliance with approved drawings and design.
- The new water and sewerage works defined by this drawing have been designed and constructed in accordance with the SEQ Code.
- This represents an accurate record of as-constructed works.
- I accept responsibility for the information contained in this drawing / document.

RPEQ (signature) RPEQ No. \_\_\_\_\_ Date: \_\_\_\_\_

Registered Surveyor's Certification

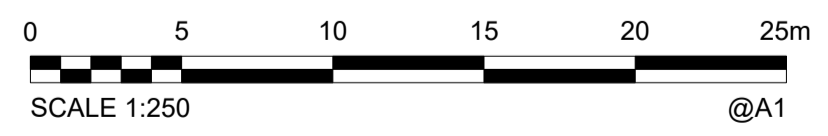
We, **VERIS AUSTRALIA P/L**, hereby certify that the horizontal and vertical locations, and dimensions shown on this plan are a true and correct record of the As Constructed information.

Sign: \_\_\_\_\_ Cadastral Surveyor, Reg. No. 54488 & Delegate

Date: \_\_\_\_\_

\*\*\*Note  
 The Hatched Suffix indicates the use of a Design Level.  
 eg. SL 20.519# \*\*\*

**COORDINATE DATUM NOTE:**  
 HORIZONTAL COORDINATES (E, N) SUPPLIED ARE MAPPING GRID OF AUSTRALIA (MGA), ZONE 56 BASED ON THE UNIVERSAL TRANSVERSE MERCATOR PROJECTION AND THE GEOCENTRIC DATUM OF AUSTRALIA 1994.  
 HORIZONTAL DATUM DERIVED FROM PM33280, E 492232.092, N 7002357.242.  
 LEVELS SUPPLIED ARE ON THE AUSTRALIAN HEIGHT DATUM (AHD).  
 LEVEL DATUM DERIVED FROM PSM108673 RL 17.338 (AHD).



**AS CONSTRUCTED**

<b>A1</b>	E	10/02/2025	PROGRESS PLOT	JMc				
	D	24/01/2025	PROGRESS PLOT	JMc				
	C	17/12/2024	PROGRESS PLOT	JMc				
	B	26/09/2024	PROGRESS PLOT	JMc				
	A	27/08/2024	PROGRESS PLOT	JMc				
INDEX	DATE	REVISIONS		DRAWN	CHECKED	PASSED	INITIALS	DATE

CONSULTING SURVEYOR

**veris**

BRISBANE (07) 3988 4700 WHITSUNDAYS (07) 4943 9900  
 MACKAY (07) 4567 9700 CAIRNS (07) 4252 9400

www.veris.com.au  
 ACH 619 758 727  
 Veris Australia Pty Ltd

**egis**

© 2023 Egis Consulting Pty Ltd  
 www.egis-group.com

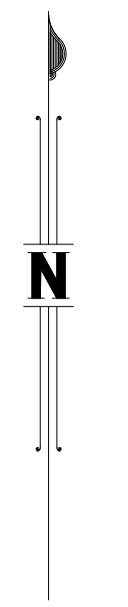
**Unitywater**

**Unitywater**

OW NUMBER TBC  
 LILYWOOD LANDINGS  
 STAGE 23  
 AS CONSTRUCTED SEWER

SHEET 2 OF 4 SHEETS	SCALE 1:250
REVISION DATE 10/02/2025	REVISION E
DISCIPLINE CODE C	
DRAWING NO. 401871-23-AS01	





**ENGINEER'S CERTIFICATION**

I, \_\_\_\_\_, hereby certify that:

- The information contained in this drawing / document is in compliance with approved drawings and design.
- The new water and sewerage works defined by this drawing have been designed and constructed in accordance with the SEQ Code.
- This represents an accurate record of as-constructed works.
- I accept responsibility for the information contained in this drawing / document.

RPED (signature) \_\_\_\_\_ RPED No. \_\_\_\_\_ Date \_\_\_\_\_

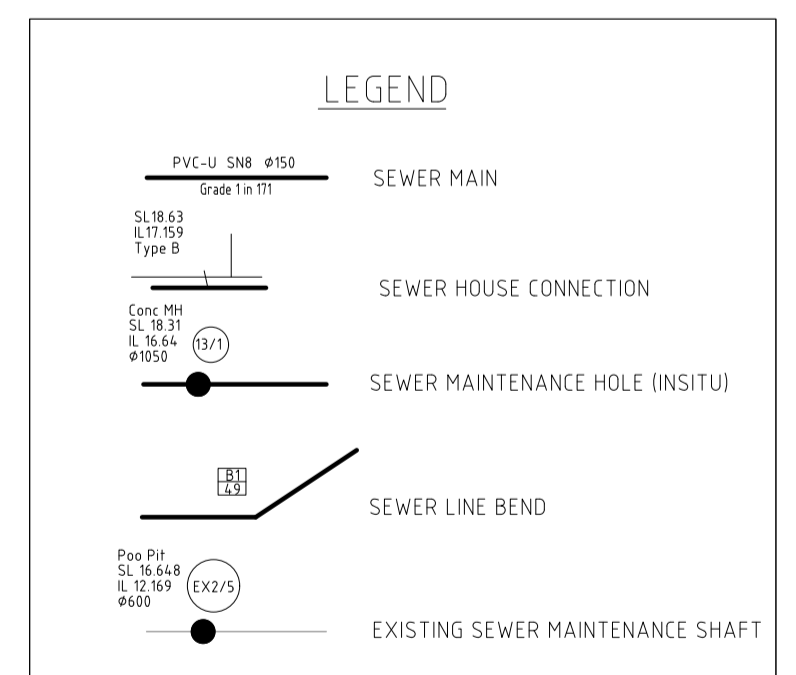
Registered Surveyor's Certification

We, VERIS AUSTRALIA P/L, hereby certify that the horizontal and vertical locations, and dimensions shown on this plan are a true and correct record of the as-constructed information.

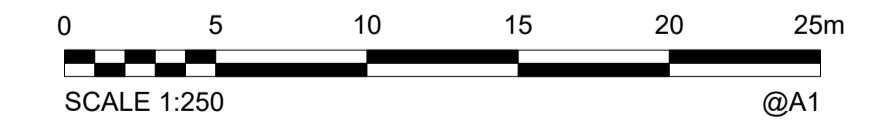
Signed \_\_\_\_\_  
 Chartered Surveyor, Reg. No. 5558  
 & Delegate

Dated: \_\_\_\_\_

**COORDINATE DATUM NOTE:**  
 HORIZONTAL COORDINATES (E,N) SUPPLIED ARE MAPPING GRID OF AUSTRALIA (MGA), ZONE 56 BASED ON THE UNIVERSAL TRANSVERSE MERCATOR PROJECTION AND THE GEOCENTRIC DATUM OF AUSTRALIA 1994.  
 HORIZONTAL DATUM DERIVED FROM PM33280, E 492232.092, N 7002357.242.  
 LEVELS SUPPLIED ARE ON THE AUSTRALIAN HEIGHT DATUM (AHD).  
 LEVEL DATUM DERIVED FROM PSM108673 RL 17.338 (AHD)



NOTES:  
 • ALL PROPERTY CONNECTIONS ARE Ø100 uPVC-U S100



**AS CONSTRUCTED**

<b>A1</b>	E	10/02/2025	PROGRESS PLOT	JMc				
	D	24/01/2025	PROGRESS PLOT	JMc				
	C	17/12/2024	PROGRESS PLOT	JMc				
	B	26/09/2024	PROGRESS PLOT	JM				
	A	27/08/2024	PROGRESS PLOT	JMc				
INDEX	DATE	REVISIONS		DRAWN	CHECKED	PASSED	INITIALS	DATE

CONSULTING SURVEYOR

**veris**

BRISBANE 071 3066 4700  
 WHITSUNDAYS 071 4545 9000  
 MACKAY 071 4522 9400  
 CAIRNS 071 4522 9400

www.veris.com.au  
 ACN 615 735 727  
 Veris Australia Pty Ltd

**egis**

© 2023 Egis Consulting Pty Ltd  
 www.egis-group.com

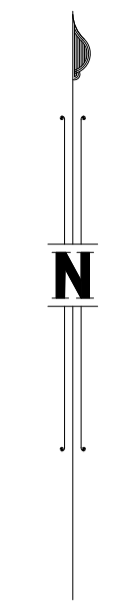
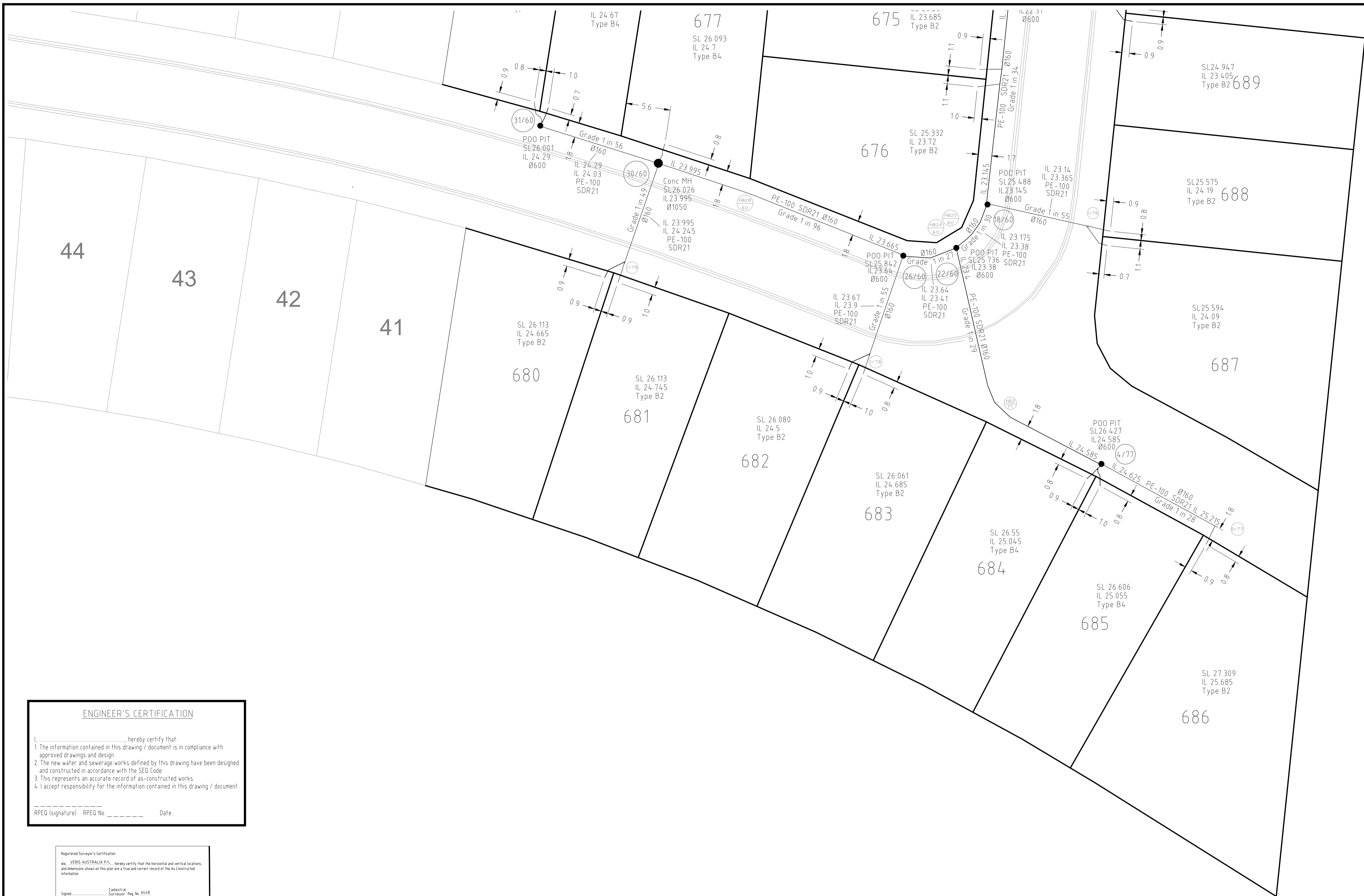
**Unitywater**

**Unitywater**

OW NUMBER TBC  
 LILYWOOD LANDINGS  
 STAGE 23  
 AS CONSTRUCTED SEWER

SHEET 3 OF 4 SHEETS	SCALE 1:250
REVISION DATE 10/02/2025	REVISION E
DISCIPLINE CODE C	
DRAWING NO. 401871-23-AS01	





**ENGINEER'S CERTIFICATION**

I, \_\_\_\_\_, hereby certify that:

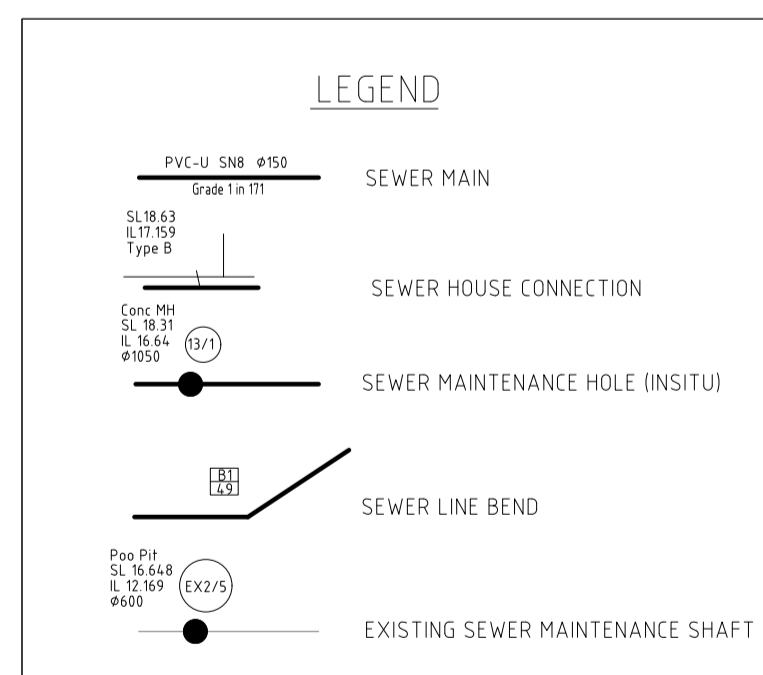
- The information contained in this drawing / document is in compliance with approved drawings and design.
- The new water and sewerage works defined by this drawing have been designed and constructed in accordance with the SEQ Code.
- This represents an accurate record of as-constructed works.
- I accept responsibility for the information contained in this drawing / document.

RPED (signature) RPED No. \_\_\_\_\_ Date \_\_\_\_\_

**Registered Surveyor's Certification**

We, VERIS AUSTRALIA PTY LTD, hereby certify that the horizontal and vertical locations, and dimensions shown on this plan are a true and correct record of the AS Constructed information.

Signed: \_\_\_\_\_ Cadastrial Surveyor Reg No. 6548 & Delegate  
 Dated: \_\_\_\_\_



**NOTES:**

- ALL PROPERTY CONNECTIONS ARE Ø100 uPVC-U SMO

**COORDINATE DATUM NOTE:**  
 HORIZONTAL COORDINATES(E,N) SUPPLIED ARE MAPPING GRID OF AUSTRALIA(MGA), ZONE 56 BASED ON THE UNIVERSAL TRANSVERSE MERCATOR PROJECTION AND THE GEOCENTRIC DATUM OF AUSTRALIA 1994.  
 HORIZONTAL DATUM DERIVED FROM PM33280, E 492232.092, N 7002357.242.  
 LEVELS SUPPLIED ARE ON THE AUSTRALIAN HEIGHT DATUM(AHD)  
 LEVEL DATUM DERIVED FROM PSM108673 RL 17.338 (AHD)



**AS CONSTRUCTED**

<b>A1</b>	E	10/02/2025	PROGRESS PLOT	JMc					
	D	24/01/2025	PROGRESS PLOT	JMc					
	C	17/12/2024	PROGRESS PLOT	JMc					
	B	26/09/2024	PROGRESS PLOT	JMc					
	A	27/05/2024	PROGRESS PLOT	JMc					
INDEX	DATE	REVISIONS	DRAWN	CHECKED	PASSED	PASSED	INITIALS	DATE	

DRAWN	JMc
CHECKED	
PASSED	

**CONSULTING SURVEYOR**  
**veris**  
 BRISBANE WHITSUNDAYS  
 (07) 3660 4700 (07) 4945 8600  
 MACKAY CAIRNS  
 (07) 4957 9700 (07) 4282 9400  
 veris.com.au  
 ACN 615 735 727  
 Veris Australia Pty Ltd



**Unitywater**

OW NUMBER TBC  
 LILYWOOD LANDINGS  
 STAGE 23  
 AS CONSTRUCTED SEWER

SHEET 4 OF 4 SHEETS	SCALE 1:250
REVISION DATE 10/02/2025	REVISION E
DISCIPLINE CODE C	
DRAWING NO. 401871-23-AS01	