

SHEET 2

SHEET 3

SHEET 4



REGISTERED SURVEYOR'S CERTIFICATION

We, VERIS AUSTRALIA PTY LTD, hereby certify that the vertical and horizontal locations and dimensions shown on this plan are a true and correct record and were located by survey.

Delegate Cadastral Surveyor (sig) Reg. Surveyor No. 6448 Date:

ENGINEER'S CERTIFICATION

I, [Engineer's Name], being a Certified/Registered Engineer and duly authorised representative of EGIS CONSULTING P/L (Consulting firm or company)

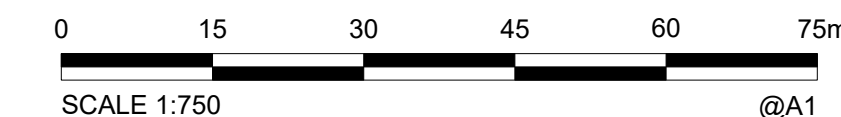
Hereby:-

- certify the information contained in this drawing/file is an accurate "as constructed" representation of the works;
- accept responsibility for the "as constructed" information contained in this drawing/file; and
- acknowledge the "as constructed" information contained in this drawing/file may be relied on by the Council and others.

Certification for Stage 23 by [Signature] on [Date]

for EGIS CONSULTING P/L (Company Name)

Registered Professional Engineering Company of Queensland [Number]



DRAWING REVISIONS	
REV.	REVISION DESCRIPTION
A	ORIGINAL 16/12/2024
B	PROGRESS PLOT 28/01/2025

REFERENCE DRAWINGS	
DESCRIPTION	

DESIGN FILE No.	DESIGNED
CONSTRUCT. No.	DATE
SURVEY FILE No. 401871-23-ASW01	DRAWN JMc
FIELD BOOK	DATE 16/12/2024
LOG BOOK	CHECKED
LEVEL DATUM AHD	DATE
DATUM	

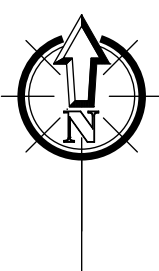
BRISBANE (07) 3666 4700
MACKAY (07) 4957 9700
WHITSUNDAYS (07) 4945 6900
CAIRNS (07) 4252 9400
veris.com.au
ACN 615 735 727
Veris Australia Pty Ltd

© 2023 Egis Consulting Pty Ltd
www.egis-group.com

MORETON BAY REGIONAL COUNCIL
CABOOLTURE DISTRICT OFFICE
2 HASKING STREET CABOOLTURE QLD 4510
PO BOX 159 CABOOLTURE QLD 4510
Telephone: (07) 5433 0100
Fax: (07) 5433 4000

OW NUMBER TBC
STAGES 23 LILYWOOD LANDINGS
AS CONSTRUCTED
STORMWATER DRAINAGE

MBRC SUBDIVISION REFERENCE	
DA/---/--	
No. 1 OF 4 PLANS	
DRAWING NUMBER	REV.
401871-23-ASW01	B



COORDINATE DATUM NOTE:

HORIZONTAL COORDINATES(E,N) SUPPLIED ARE MAPPING GRID OF AUSTRALIA(MGA), ZONE 56 BASED ON THE UNIVERSAL TRANSVERSE MERCATOR PROJECTION AND THE GEOCENTRIC DATUM OF AUSTRALIA 1994.
 HORIZONTAL DATUM DERIVED FROM PSM177715, E 491349.787, N 7002367.321.
 LEVELS SUPPLIED ARE ON THE AUSTRALIAN HEIGHT DATUM(AHD)
 LEVEL DATUM DERIVED FROM PSM108673 RL 17.338 (AHD)



REGISTERED SURVEYOR'S CERTIFICATION

We, VERIS AUSTRALIA PTY LTD, hereby certify that the vertical and horizontal locations and dimensions shown on this plan are a true and correct record and were located by survey.

 Delegate Cadastral Surveyor (sig) Reg. Surveyor No 6448 Date: _____

ENGINEER'S CERTIFICATION

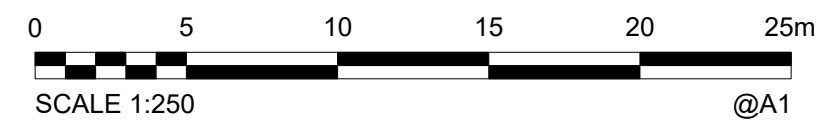
I, _____, being a Certificated/Registered Engineer and
 (Engineer's Name)
 duly authorised representative of EGIS CONSULTING P/L
 (Consulting firm or company)

Hereby:-

- certify the information contained in this drawing/file is an accurate "as constructed" representation of the works;
- accept responsibility for the "as constructed" information contained in this drawing/file; and
- acknowledge the "as constructed" information contained in this drawing/file may be relied on by the Council and others.

Certification for Stage 23 by _____ on _____
 (Stage No) (Signature) (Date)

for EGIS CONSULTING P/L
 (Company Name)
 Registered Professional Engineering Company of Queensland _____
 (Number)



DRAWING REVISIONS		REFERENCE DRAWINGS		DESIGN FILE No.	DESIGNED
REV.	REVISION DESCRIPTION	DESCRIPTION	CONSTRUCT. No.	DATE	
A	ORIGINAL 16/12/2024				
B	PROGRESS PLOT 28/01/2025				

SURVEY FILE No.	FIELD BOOK	LOG BOOK	LEVEL DATUM	DATUM
R01871-23-ASW01			AHD	

veris

BRISBANE (07) 3668 4700
 WHITSUNDAYS (07) 4945 6600
 MACKAY (07) 4967 5700
 CAIRNS (07) 4252 4400
 veris.com.au
 ACN 615 735 727
 Veris Australia Pty Ltd

egis

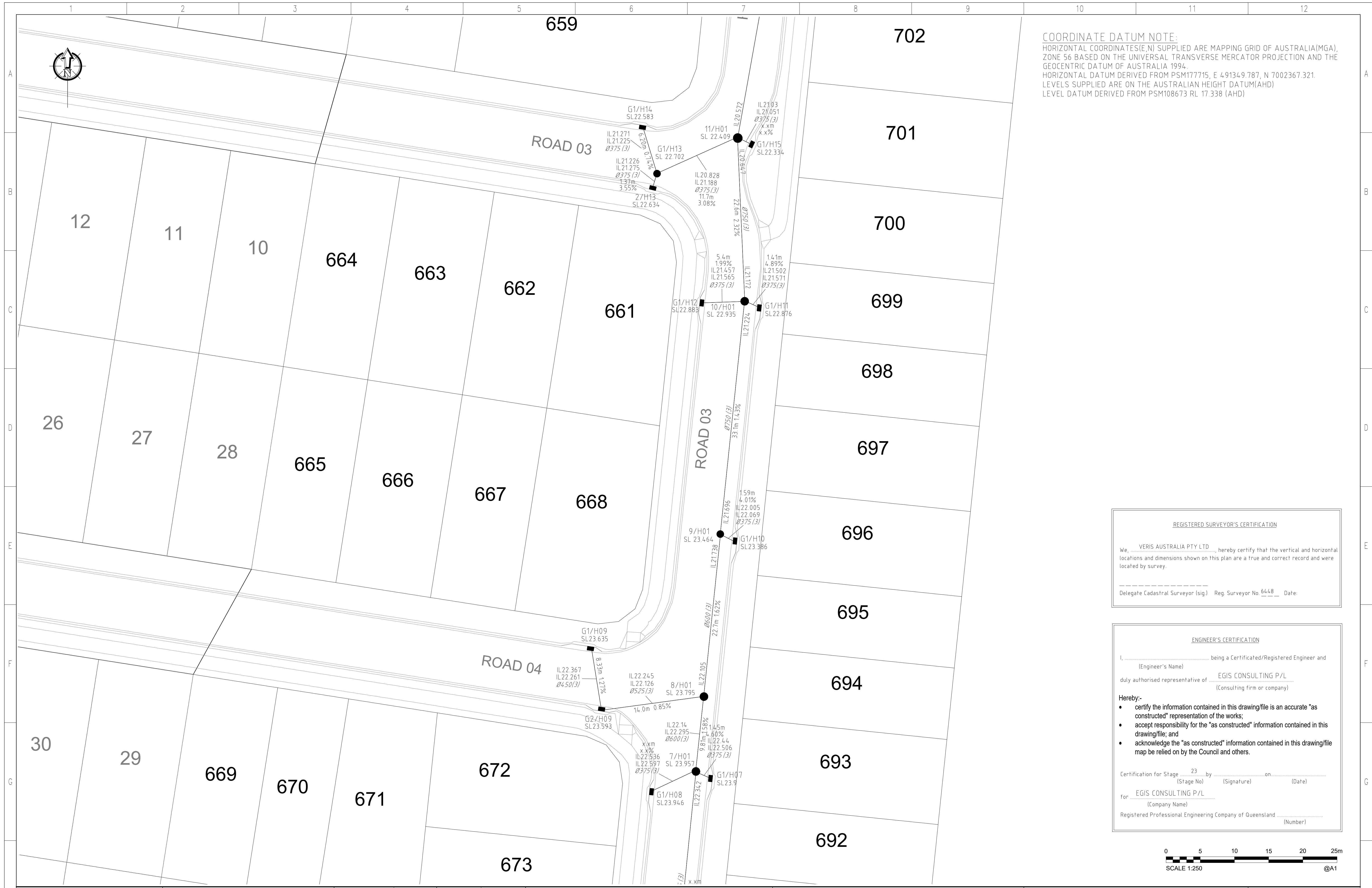
© 2023 Egis Consulting Pty Ltd
 www.egis-group.com

Moreton Bay
 Regional Council

MORETON BAY REGIONAL COUNCIL
 CABOOLTURE DISTRICT OFFICE
 2 HASKING STREET CABOOLTURE QLD 4510
 PO BOX 159 CABOOLTURE QLD 4510
 Telephone: (07) 5433 0100
 Fax: (07) 5433 4000

OW NUMBER TBC
STAGES 23 LILYWOOD LANDINGS
AS CONSTRUCTED
STORMWATER DRAINAGE

MBRC SUBDIVISION REFERENCE	
DA/----/----	
No. 2 OF 4 PLANS	REV.
401871-23-ASW01	B



COORDINATE DATUM NOTE:
 HORIZONTAL COORDINATES(E,N) SUPPLIED ARE MAPPING GRID OF AUSTRALIA(MGA), ZONE 56 BASED ON THE UNIVERSAL TRANSVERSE MERCATOR PROJECTION AND THE GEOCENTRIC DATUM OF AUSTRALIA 1994.
 HORIZONTAL DATUM DERIVED FROM PSM177715, E 491349.787, N 7002367.321.
 LEVELS SUPPLIED ARE ON THE AUSTRALIAN HEIGHT DATUM(AHD)
 LEVEL DATUM DERIVED FROM PSM108673 RL 17.338 (AHD)

REGISTERED SURVEYOR'S CERTIFICATION

We, VERIS AUSTRALIA PTY LTD, hereby certify that the vertical and horizontal locations and dimensions shown on this plan are a true and correct record and were located by survey.

Delegate Cadastral Surveyor (sig) Reg. Surveyor No. 6448 Date: _____

ENGINEER'S CERTIFICATION

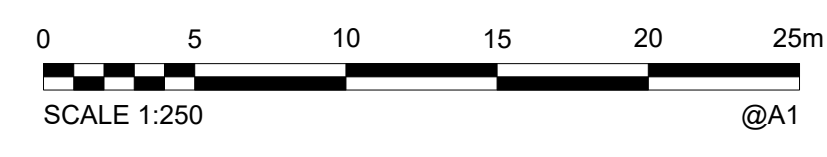
I, _____ being a Certificated/Registered Engineer and _____ (Engineer's Name) duly authorised representative of EGIS CONSULTING P/L (Consulting firm or company)

Hereby:-

- certify the information contained in this drawing/file is an accurate "as constructed" representation of the works;
- accept responsibility for the "as constructed" information contained in this drawing/file; and
- acknowledge the "as constructed" information contained in this drawing/file map be relied on by the Council and others.

Certification for Stage 23 by _____ on _____ (Date)
 (Stage No) (Signature) (Date)

for EGIS CONSULTING P/L (Company Name)
 Registered Professional Engineering Company of Queensland _____ (Number)



DRAWING REVISIONS	
REV.	REVISION DESCRIPTION
A	ORIGINAL 16/12/2024
B	PROGRESS PLOT 28/01/2025

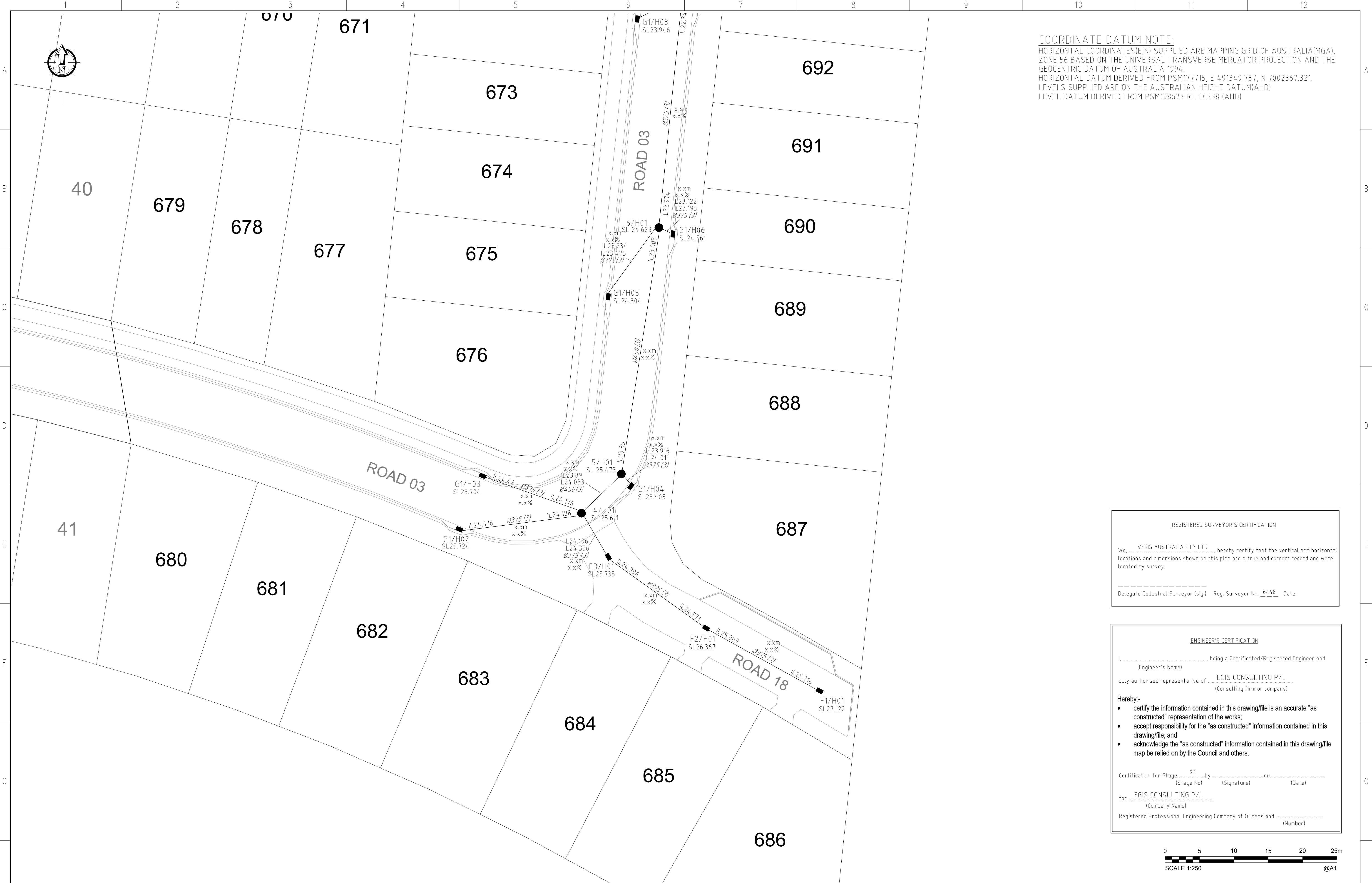
REFERENCE DRAWINGS	
CONSTRUCT. No.	DESCRIPTION

DESIGNED	DATE	DESIGNED	DATE
JMc	16/12/2024		

MORETON BAY REGIONAL COUNCIL
 CABOOLTURE DISTRICT OFFICE
 2 HASKING STREET CABOOLTURE QLD 4510
 PO BOX 159 CABOOLTURE QLD 4510
 Telephone: (07) 5433 0100
 Fax: (07) 5433 4000

OW NUMBER TBC
STAGES 23 LILYWOOD LANDINGS
AS CONSTRUCTED
STORMWATER DRAINAGE

MBRC SUBDIVISION REFERENCE	
DA/---/---	
No. 3 OF 4 PLANS	
DRAWING NUMBER	REV.
401871-23-ASW01	B



COORDINATE DATUM NOTE:
 HORIZONTAL COORDINATES(E,N) SUPPLIED ARE MAPPING GRID OF AUSTRALIA(MGA), ZONE 56 BASED ON THE UNIVERSAL TRANSVERSE MERCATOR PROJECTION AND THE GEOCENTRIC DATUM OF AUSTRALIA 1994.
 HORIZONTAL DATUM DERIVED FROM PSM177715, E 49134.9.787, N 7002367.321.
 LEVELS SUPPLIED ARE ON THE AUSTRALIAN HEIGHT DATUM(AHD)
 LEVEL DATUM DERIVED FROM PSM108673 RL 17.338 (AHD)

REGISTERED SURVEYOR'S CERTIFICATION

We, VERIS AUSTRALIA PTY LTD, hereby certify that the vertical and horizontal locations and dimensions shown on this plan are a true and correct record and were located by survey.

Delegate Cadastral Surveyor (sig.) Reg. Surveyor No. 6448 Date:

ENGINEER'S CERTIFICATION

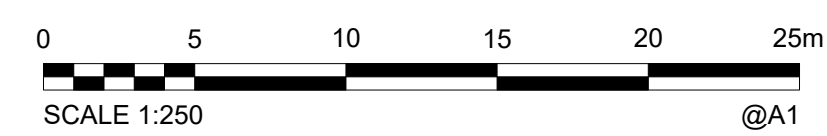
I, _____ being a Certificated/Registered Engineer and _____ (Engineer's Name) duly authorised representative of EGIS CONSULTING P/L (Consulting firm or company)

Hereby:-

- certify the information contained in this drawing/file is an accurate "as constructed" representation of the works;
- accept responsibility for the "as constructed" information contained in this drawing/file; and
- acknowledge the "as constructed" information contained in this drawing/file may be relied on by the Council and others.

Certification for Stage 23 by _____ on _____ (Date)
 (Stage No) (Signature) (Date)

for EGIS CONSULTING P/L (Company Name)
 Registered Professional Engineering Company of Queensland (Number)



REV.	DRAWING REVISIONS	REFERENCE DRAWINGS
	REVISION DESCRIPTION	DESCRIPTION
A	ORIGINAL 16/12/2024	
B	PROGRESS PLOT 28/01/2025	

DESIGN FILE No.	DESIGNED
CONSTRUCT. No.	DATE

SURVEY FILE No.	DRAWN
FIELD BOOK	DATE
LOG BOOK	CHECKED
LEVEL DATUM	DATE
DATUM	
H01871-23-ASW01	JMc
	16/12/2024
AHD	

BRISBANE (07) 3886 4700
 MACKAY (07) 4957 5700
 WHITSUNDAYS (07) 4945 6800
 CAIRNS (07) 4202 9600
 veris.com.au
 ACN 615 735 727
 Veris Australia Pty Ltd

© 2023 Egis Consulting Pty Ltd
 www.egis-group.com

MORETON BAY REGIONAL COUNCIL
 CABOOLTURE DISTRICT OFFICE
 2 HASKING STREET CABOOLTURE QLD 4510
 PO BOX 159 CABOOLTURE QLD 4510
 Telephone: (07) 5433 0100
 Fax: (07) 5433 4000

MORETON BAY REGIONAL COUNCIL
 CABOOLTURE DISTRICT OFFICE
 2 HASKING STREET CABOOLTURE QLD 4510
 PO BOX 159 CABOOLTURE QLD 4510
 Telephone: (07) 5433 0100
 Fax: (07) 5433 4000

OW NUMBER TBC
 STAGES 23 LILLYWOOD LANDINGS
 AS CONSTRUCTED
 STORMWATER DRAINAGE

MBRC SUBDIVISION REFERENCE	
DA/---/----	
No. 4 OF 4 PLANS	
DRAWING NUMBER	REV.
401871-23-ASW01	B