



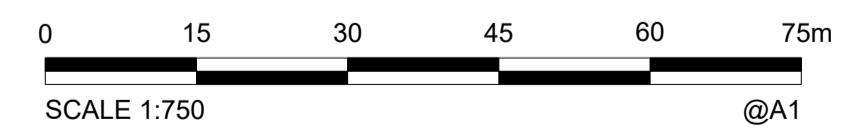
**LEGEND**

- New Tee
- New Hydrant
- New Valve
- New End Cap
- New Taper
- New Water Service Conduit (80/100/150/200)
- New Water Meter
- New Water Abuser connection
- #50 Stop Valve
- #50 Fire Hydrant
- #50 #50 Tee
- #50 Street End Cap
- #50 11.25' BEND
- #50 22.5' BEND
- #50 45' BEND
- #50 90' BEND
- #50 Stop Valve
- #50 Fire Hydrant
- #50 #50 Tee

**COORDINATE DATUM NOTE:**  
 HORIZONTAL COORDINATES(E,N) SUPPLIED ARE MAPPING GRID OF AUSTRALIA(MGA), ZONE 56 BASED ON THE UNIVERSAL TRANSVERSE MERCATOR PROJECTION AND THE GEOCENTRIC DATUM OF AUSTRALIA 1994.  
 HORIZONTAL DATUM DERIVED FROM PM33280, E 492232.092, N 7002357.242.  
 LEVELS SUPPLIED ARE ON THE AUSTRALIAN HEIGHT DATUM(AHD)  
 LEVEL DATUM DERIVED FROM PSM108673 RL 17.338 (AHD)

Registered Surveyor's Certification  
 We, VERIS AUSTRALIA PTY LTD, hereby certify that the horizontal and vertical locations, and dimensions shown on this plan are a true and correct record of the As Constructed information.  
 Signed: \_\_\_\_\_ Cadastrial Surveyor Reg No 6648 & Delegate  
 Dated: \_\_\_\_\_

**ENGINEER'S CERTIFICATION**  
 I, \_\_\_\_\_ hereby certify that:  
 1. The information contained in this drawing / document is in compliance with approved drawings and design.  
 2. The new water and sewerage works defined by this drawing have been designed and constructed in accordance with the SEQ Code.  
 3. This represents an accurate record of as-constructed works  
 4. I accept responsibility for the information contained in this drawing / document.  
 RPEQ (signature) RPEQ No. \_\_\_\_\_ Date: \_\_\_\_\_



**AS CONSTRUCTED**

<b>A1</b>	B	27/09/2024	PROGRESS PLOT	JMc						
	A	28/08/2024	PROGRESS PLOT	JMc						
	INDEX	DATE	REVISIONS	DRAWN	CHECKED	PASSED	INITIALS	DATE		

DRAWN	JMc	10/05/2024
CHECKED		
PASSED		

CONSULTING SURVEYOR  
**veris**  
 BRISBANE WHITSUNDAYS  
 071 2666 4700 071 4945 6000  
 MACKAY CAIRNS  
 071 4957 8700 071 2322 8400  
 veris.com.au  
 ACN 6115 735 727  
 Veris Australia Pty Ltd

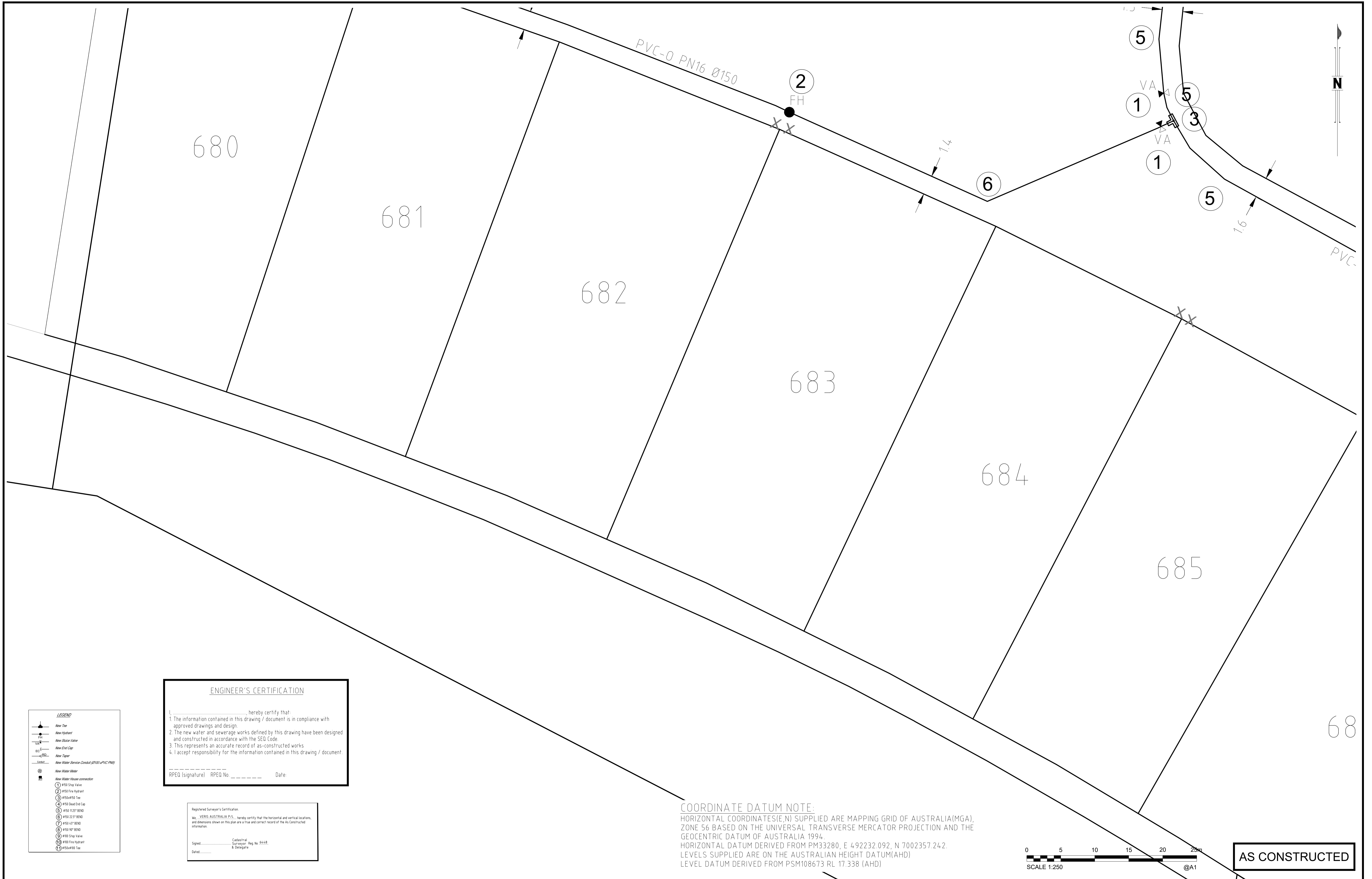


**Unitywater**  
 DW NUMBER TBC  
 LILYWOOD LANDINGS  
 STAGE 23  
 AS CONSTRUCTED WATER

SHEET 1 OF 4 SHEETS	SCALE 1:750
REVISION DATE 27/09/2024	REVISION B
DISCIPLINE CODE C	
DRAWING NO. 401871-23-AW01-B	







**ENGINEER'S CERTIFICATION**

I, \_\_\_\_\_, hereby certify that:

- The information contained in this drawing / document is in compliance with approved drawings and design.
- The new water and sewerage works defined by this drawing have been designed and constructed in accordance with the SEQ Code.
- This represents an accurate record of as-constructed works.
- I accept responsibility for the information contained in this drawing / document.

\_\_\_\_\_  
RPEQ (Signature) RPEQ No. \_\_\_\_\_ Date: \_\_\_\_\_

Registered Surveyor's Certification

Ms. VERIS AUSTRALIA P/L, hereby certify that the horizontal and vertical locations, and dimensions shown on this plan are a true and correct record of the as-constructed information.

Signed: \_\_\_\_\_  
Date: \_\_\_\_\_

\_\_\_\_\_  
Certified Surveyor Reg. No. 8548  
& Designate

**COORDINATE DATUM NOTE:**  
 HORIZONTAL COORDINATES(E,N) SUPPLIED ARE MAPPING GRID OF AUSTRALIA(MGA), ZONE 56 BASED ON THE UNIVERSAL TRANSVERSE MERCATOR PROJECTION AND THE GEOCENTRIC DATUM OF AUSTRALIA 1994.  
 HORIZONTAL DATUM DERIVED FROM PM33280, E 492232.092, N 7002357.242.  
 LEVELS SUPPLIED ARE ON THE AUSTRALIAN HEIGHT DATUM(AHD)  
 LEVEL DATUM DERIVED FROM PSM108673 RL 17.338 (AHD)

- LEGEND**
- New Tee
  - New Hydrant
  - New Valve
  - New 450mm Pipe
  - New 150mm Pipe
  - New 75mm Pipe
  - New 40mm Pipe
  - New 20mm Pipe
  - New 10mm Pipe
  - New Water Meter
  - New Water Abacus connection
  - 150mm Stop Valve
  - 150mm Free Hydrant
  - 150mm 45° Bend
  - 150mm 90° Bend
  - 150mm 135° Bend
  - 150mm Tee
  - 150mm Dead End Cap
  - 150mm 22.5° Bend
  - 150mm 45° Bend
  - 150mm 90° Bend
  - 150mm Tee

<b>A1</b>	B	27/09/2024	PROGRESS PLOT	JMc			DRAWN	JMc	28/08/2024
	A	28/08/2024	PROGRESS PLOT	JMc			CHECKED		
	INDEX	DATE	REVISIONS	DRAWN	CHECKED	PASSED	INITIALS	DATE	

CONSULTING SURVEYOR

**veris**

BRISBANE 071 3658 4700  
WHITSUNDAYS 071 4145 9600  
MACKAY 071 4957 9700  
CAIRNS 071 4252 9400

veris.com.au  
ACN 615 735 727  
Veris Australia Pty Ltd

**egis**

© 2023 Egis Consulting Pty Ltd  
www.egis-group.com

**Unitywater**

**Unitywater**

OW NUMBER TBC  
LILYWOOD LANDINGS  
STAGE 23  
AS CONSTRUCTED WATER

SHEET 4 OF 4 SHEETS	SCALE 1:250
REVISION DATE 27/09/2024	REVISION B
DISCIPLINE CODE C	
DRAWING NO. 401871-23-AW01-B	