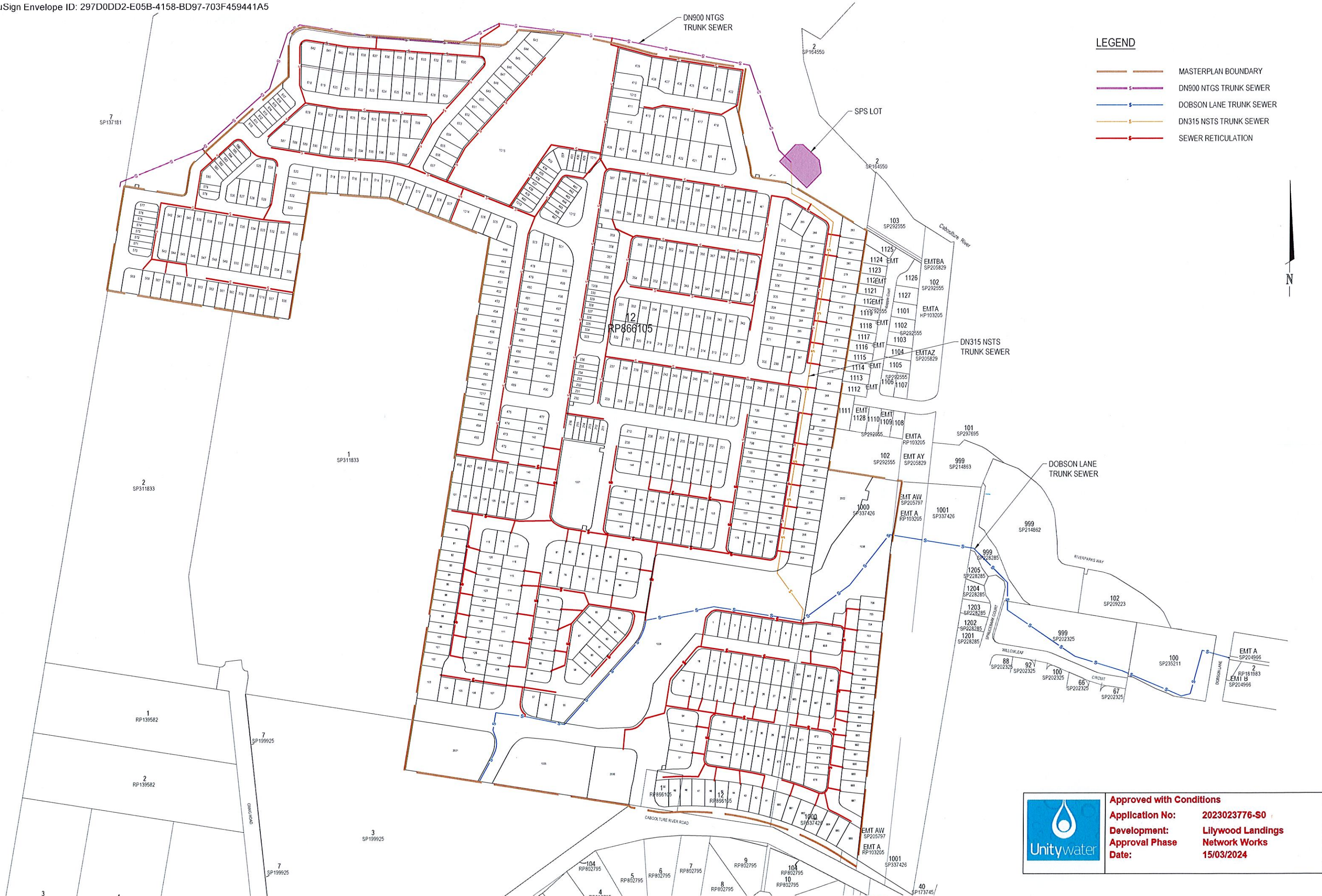



LEGEND

-  MASTERPLAN BOUNDARY
-  DN900 NTGS TRUNK SEWER
-  DOBSON LANE TRUNK SEWER
-  DN315 NSTS TRUNK SEWER
-  SEWER RETICULATION



	Approved with Conditions	
	Application No:	2023023776-S0
	Development:	Lilywood Landings
	Approval Phase:	Network Works
	Date:	15/03/2024



Sketch Plan

1:2000 20 0 20 40 60 80 100m A1
1:4000 A3

Title: LILYWOOD LANDINGS - MASTERPLAN SEWER LAYOUT	Date: 8/11/2023	Drawn By: A.ANNFIELD	Scale: 1:2000 (A1)
Client: FOREVERLEN PTY LTD	Project #: 22-000082	Sketch #: SK210	Revision: A
Office: BRISBANE			

LILYWOOD LANDINGS

STAGE 3 - OPERATIONAL WORKS

FOR FOREVERLEN PTY LTD



DRAWING INDEX

DWG NO.	DESCRIPTION
GENERAL	
1000	TITLE SHEET & LOCALITY PLAN
KEY PLAN	
1100	SITE LAYOUT PLAN
CONTROL LINE SETOUT	
1300	CONTROL LINE SETOUT PLAN SHEET 1 OF 2
1301	CONTROL LINE SETOUT PLAN SHEET 2 OF 2
1302	CONTROL LINE SETOUT PLAN DETAILS
ROADWORKS LAYOUT PLAN	
1310	ROADWORKS LAYOUT PLAN SHEET 1 OF 2
1311	ROADWORKS LAYOUT PLAN SHEET 2 OF 2
INTERSECTION DETAILS	
1320	INTERSECTION DETAILS SHEET 1 OF 2
1321	INTERSECTION DETAILS SHEET 2 OF 2
LONGITUDINAL AND CROSS SECTIONS	
1330	ROAD 7 LONGITUDINAL SECTION
1331	ROAD 7 CROSS SECTIONS
1332	ROAD 10 LONGITUDINAL SECTION SHEET 1 OF 2
1333	ROAD 10 LONGITUDINAL SECTION SHEET 2 OF 2
1334	ROAD 10 CROSS SECTIONS SHEET 1 OF 2
1335	ROAD 10 CROSS SECTIONS SHEET 2 OF 2
1336	ROAD 11 LONG & CROSS SECTIONS
1337	ROAD 12 LONG & CROSS SECTIONS
1338	ROAD 21 LONG & CROSS SECTIONS
STORMWATER LAYOUT PLANS	
1400	STORMWATER LAYOUT PLAN SHEET 1 OF 2
1401	STORMWATER LAYOUT PLAN SHEET 2 OF 2
1402	STORMWATER NOTES AND DETAILS
STORMWATER CATCHMENT PLAN	
1410	STORMWATER CATCHMENT PLAN
STORMWATER LONGITUDINAL SECTIONS	
1420	STORMWATER LONGITUDINAL SECTIONS
STORMWATER CALCULATION TABLES	
1430	STORMWATER CALCULATION TABLES MINOR
1431	STORMWATER CALCULATION TABLES MAJOR
SEWER RETICULATION PLANS	
1500	SEWER RETICULATION COVER SHEET
1501	SEWER RETICULATION LAYOUT PLAN SHEET 1 OF 2
1502	SEWER RETICULATION LAYOUT PLAN SHEET 2 OF 2
SEWER LONGITUDINAL SECTIONS	
1510	SEWER RETICULATION LONGITUDINAL SECTIONS SHEET 1 OF 2
1511	SEWER RETICULATION LONGITUDINAL SECTIONS SHEET 2 OF 2
WATER RETICULATION PLANS	
1600	WATER RETICULATION COVER SHEET
1601	WATER RETICULATION LAYOUT PLAN SHEET 1 OF 2
1602	WATER RETICULATION LAYOUT PLAN SHEET 2 OF 2

CONSTRUCTION HOLD POINT
PRIOR TO CONSTRUCTION THE CONTRACTOR SHALL VERIFY LEVELS OF ALL EXISTING CROSSINGS AND CONNECTION POINTS.

CONSTRUCTION NOTE
THESE DRAWINGS ARE TO BE READ IN CONJUNCTION WITH:

- CRR INTERSECTION & IDC SET - 22-000082_CRR
- BULK EARTHWORKS SET - 22-000082_EWKS
- STAGE 1A / 1B SET - 22-000082_1A-1B
- STAGE 2 SET - 22-000082_2
- STAGE 4 SET - 22-000082_4
- STAGE 23 SET - 22-000082_23
- GEOTECHNICAL REPORT
- BAF TRUNK WATER INFRASTRUCTURE SET - 22-000082_TWI
- BAF DOBSON LANE TRUNK GRAVITY SEWER SET - 22-000027
- BAF DN900 NORTHERN TRUNK GRAVITY SEWER SET - 22-000027_NTGS
- BAF NORTH-SOUTH TRUNK GRAVITY SEWER SET - 22-000027_NSTS
- SIGNALS PLANS (BY CV SERVICES)
- LANDSCAPE PLANS (BY AECOM)
- ELECTRICAL / COMMS PLANS (BY CV SERVICES)

APPROVED WITH CONDITIONS
Application No: 2023023775 S1 Lilywood Landings Stage 3(NDP1)
Development: Caboolture West
Phase: Network Works
Date: 18/06/2024

MORETON BAY REGIONAL COUNCIL
 LOT 12 ON RP 8661055
 AREA OF SITE: 2.491ha
 DA 2021/4669



IMAGINE. CREATE. ACHIEVE.
a sustainable future



LEGEND

- STAGE BOUNDARY
- PROPOSED LOT BOUNDARY
- EXISTING LOT BOUNDARY
- FUTURE LOT BOUNDARY
- AREA OF FUTURE DEVELOPMENT

APPROVED WITH CONDITIONS

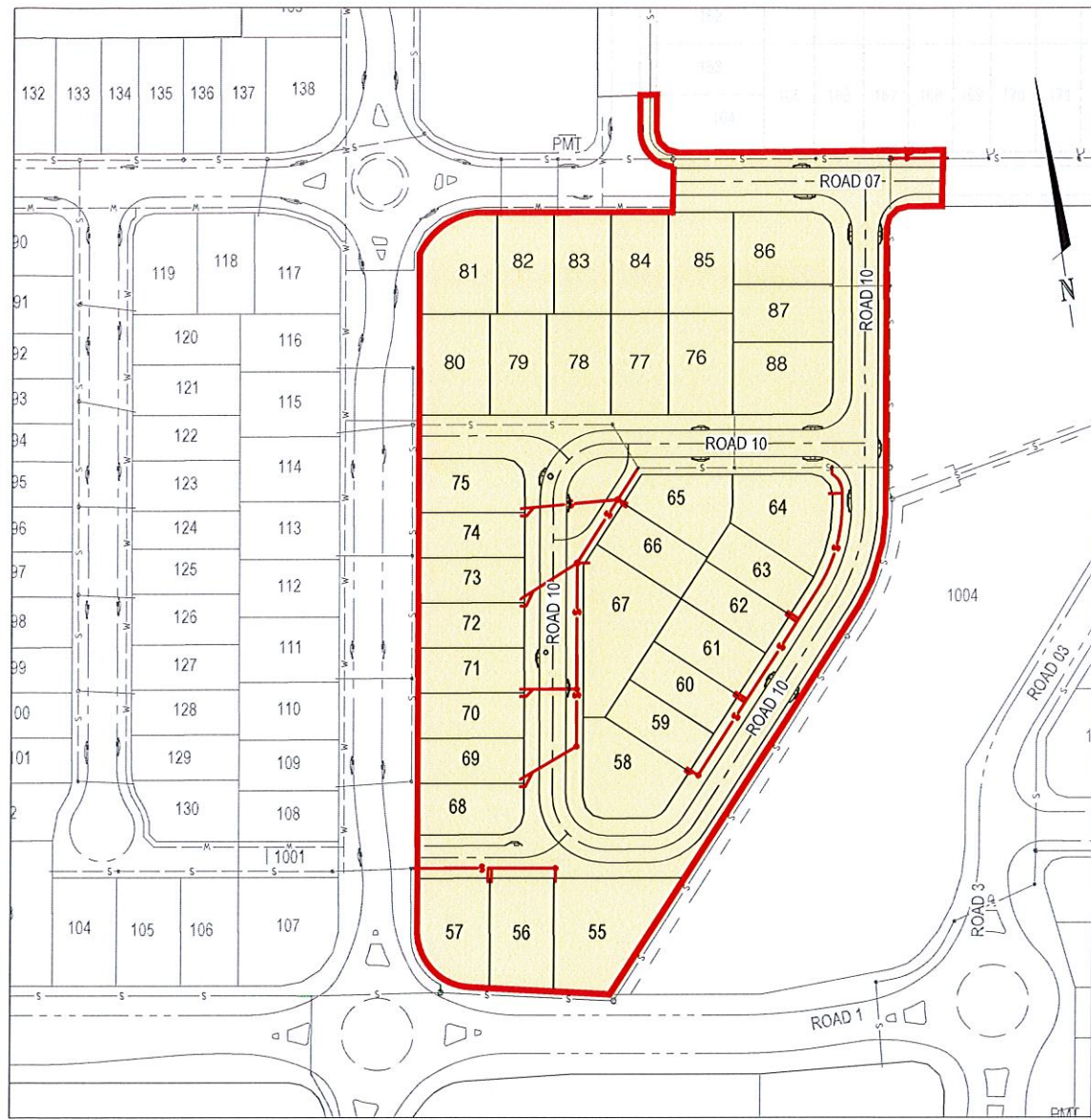
Application No: 2023023775 S1 Lilywood Landings Stage 3(NDP1)
Development: Caboolture West
Phase: Network Works

Date: 18/06/2024

LOT 7
SP199925

LOT 12
RP866105
CABOOLTURE RIVER ROAD (CRR) / INTERNAL DISTRICT COLLECTOR (IDC) SITE ACCESS ROADS. REFER CRR & IDC SET - 22-000082_CRR

INITIAL ISSUE	CHKD	DRN	CHKD	APP	DATE	AMENDMENT DETAILS	STATUS	SCALE	CLIENT	PROJECT	DRAWING TITLE	
A	AA	RT	AA	RA	15.09.23	ISSUED FOR APPROVAL	FOR APPROVAL	1:1000 1:2000		LENNIUM GROUP	Lilywood LANDINGS STAGE 3	SITE LAYOUT PLAN
APPROVED BY: MAX HOOVER NO: 16633 SIGN: DATE: 12.03.24									© 2023 Egis Consulting Pty Ltd www.egis-group.com		PROJECT No. 22-000082_3 DRAWING No. 1100 REVISION A	



APPROVED WITH CONDITIONS

Unitywater
Application No: 2023023775 S1 Lilywood Landings Stage 3(NDP1)
Development: Caboolture West
Phase: Network Works

Date: 18/06/2024

NOTE:
 NOTWITHSTANDING THAT EXISTING SERVICES MAY OR MAY NOT BE SHOWN ON THE JOB DRAWINGS, NO RESPONSIBILITY IS TAKEN BY THE SUPERINTENDENT OR THE PRINCIPAL FOR THIS INFORMATION WHICH HAS BEEN SUPPLIED BY OTHERS. THE DETAILS ARE PROVIDED FOR INFORMATION ONLY. THE CONTRACTOR SHALL ASCERTAIN THE POSITION OF ANY UNDERGROUND SERVICES IN THIS AREA AND SHALL BE RESPONSIBLE FOR MAKING GOOD ANY DAMAGE THERETO.

NOTE:
 ALL WORKS ON EXISTING SEWER(S) TO BE CARRIED OUT BY UNITYWATER PRIVATE WORKS AT THE DEVELOPER'S EXPENSE UNLESS OTHERWISE AGREED AT THE PRESTART MEETING.

SEWERAGE RETICULATION NOTES

1. MAINS TO BE LAID ON 1.75m ALIGNMENT (IN THE ROAD RESERVE) UNLESS OTHERWISE DIRECTED BY THE SUPERINTENDENT.
2. THE CONTRACTOR SHALL VERIFY FINISHED SURFACE LEVELS AND CONFIRM EXISTING LEVELS WHERE NEW WORK JOINS TO EXISTING BEFORE CONSTRUCTION OF SEWERS AND HOUSE CONNECTIONS.
3. THE CONTRACTOR SHALL BE RESPONSIBLE FOR TESTING OF SEWERS AND SHALL BE CARRIED OUT TO THE REQUIREMENTS OF UNITY WATER.
4. FOR BEDDING OF SEWER LINES REFER SEQ-SEW-1200 SERIES STD DRGS.
5. THE CONTRACTOR IS DIRECTLY RESPONSIBLE FOR THE SETOUT. SHOULD ACTUAL SITE CONDITIONS CONFLICT IN ANY WAY WITH THE DOCUMENTED, THE CONTRACTOR MUST CONTACT THE SUPERINTENDENT FOR CLARIFICATION BEFORE PROCEEDING.
6. SEWERS TO BE LAID ON UNITYWATER STANDARD ALIGNMENTS PER THE SEQ WATER AND SEWERAGE DESIGN AND CONSTRUCTION CODE, WITHIN VERGE UNLESS NOTED OTHERWISE. FRONT AND REAR BOUNDARIES 1.5m OFFSET, 1.0m OFFSET FOR SIDE BOUNDARIES. 1.0m CLEARANCE TO BE MAINTAINED BETWEEN SEWERS AND INTER-ALLOTMENT DRAINAGE LINES.
7. REFER SEQ-SEW-1300 SERIES STANDARD DRAWINGS FOR MANHOLE DETAILS.
8. NO LADDER, STEP IRONS OR LANDINGS ARE PERMITTED WITHIN MANHOLES.
9. ALL WORK AND MATERIALS SHALL BE IN ACCORDANCE WITH CURRENT SOUTH EAST QUEENSLAND SEWERAGE CODE SPECIFICATIONS AND STANDARDS.
10. UNLESS SPECIFIED OTHERWISE ALL MATERIALS AND WORK SHALL COMPLY WITH THE RELEVANT UNITYWATER AND AUSTRALIAN STANDARDS.
11. THE CONSTRUCTION OF THE SEWERAGE WORKS SHOWN ON THIS DRAWING SHALL BE SUPERVISED BY AN ENGINEER WHO HAS RPEQ REGISTRATION. SEWERAGE WORKS NOT COMPLYING WITH THIS REQUIREMENT WILL NOT BE PERMITTED TO CONNECT INTO THE UNITYWATER SEWERAGE SYSTEM.
12. ALL WORKS ASSOCIATED WITH LIVE SEWER OR MAINTENANCE HOLES SHALL BE CARRIED OUT BY UNITYWATER OR AS DIRECTED BY UNITYWATER WHEN WORKS ARE OPERATING AS "BAU" UNDER UNITYWATER'S CONNECTION POLICY. LIVE CONNECTIONS ARE TO BE COMPLETED UNDER THE SUPERVISION OF THE CONSTRUCTION CERTIFIER WHEN WORKS ARE OPERATING UNDER THE UNITYWATER ACCREDITATION AND CERTIFICATION MANUAL.
13. ALL PIPE AND MATERIALS SHALL COMPLY WITH THE REQUIREMENTS OF THE "ACCEPTED PRODUCTS AND MATERIALS" LIST.
14. EACH ALLOTMENT SHALL BE SERVED BY AN OD110 PE (OR DN100 PVC) PROPERTY CONNECTION. FOR ALLOTMENTS OTHER THAN SINGLE RESIDENTIAL, AN OD160 PE (OR DN150 PVC) PROPERTY CONNECTION SHALL BE PROVIDED.
15. PROPERTY CONNECTIONS SHALL BE LOCATED WITHIN THE PROPERTY AS SHOWN IN THE DRAWINGS.
16. PROPERTY CONNECTION BRANCHES SHALL EXTEND INTO THE PROPERTY A MINIMUM OF 500mm AND A MAXIMUM OF 750mm PER UNITYWATER REQUIREMENTS.
17. WHERE PIPES ARE LAID IN FILL, THE FILLING SHALL BE CARRIED OUT IN LAYERS NOT EXCEEDING 300mm (LOOSE) IN DEPTH AND SHALL BE COMPACTED UNTIL THE COMPACTION IS NOT LESS THAN 95% OF THE MATERIAL'S MAXIMUM COMPACTION WHEN TESTED IN ACCORDANCE WITH A.S. 1289 (MODIFIED COMPACTION). TESTING SHALL BE CARRIED OUT AFTER EACH ALTERNATIVE LAYER. IN ALL SUCH CASES, APPROVAL OF CONSTRUCTED SEWERS WILL NOT BE ISSUED BY UNITYWATER UNLESS CERTIFICATES ARE PRODUCED CERTIFYING THAT THE REQUIRED COMPACTION HAS BEEN ACHIEVED.
18. WHERE SEWERS HAVE A GRADE OF 1 IN 20 (5%) OR STEEPER, BULKHEADS SHALL BE CONSTRUCTED IN ACCORDANCE WITH THE SEQ SEWER CODE.
19. THE CONTRACTOR SHALL VERIFY THE LOCATION AND DEPTH OF EXISTING SERVICES WITH RELEVANT AUTHORITIES BEFORE COMMENCING WORKS.
20. SEWERS SHALL BE DISUSED/ABANDONED IN ACCORDANCE WITH PROCEDURES SET OUT IN THE SEQ SEWER CODE.
21. BENCH MARK AND LEVELS TO AHD.
22. EXISTING ALLOTMENTS REQUIRING A PROPERTY CONNECTIONS FROM EXISTING SEWERS SHALL BE PROVIDED BY UNITYWATER AT THE DEVELOPER'S COST.
23. ALL NON-METALLIC PIPES SHALL HAVE APPROVED DETECTABLE MARKER TAPE LAID ON TOP OF THE PIPE BEDDING IN ACCORDANCE WITH STANDARD DRAWINGS SEQ-SEW-1200-2 TO SEQ-SEW-1205-1.
24. CCTV FOOTAGE TO THE REQUIREMENTS OF UNITYWATER AND SEQ CODE TO BE PROVIDED PRIOR TO ON MAINTENANCE.

LIVE WORKS TABLE

NO.	DESCRIPTION	SEW DIA	MH No.	MH/MS TYPE	COVER TYPE	LOT No.	F.S.L.	E.S.L.	I.L.	DEPTH
1(A)	FROM EXISTING MAINTENANCE HOLE EX5/15, CONTRACTOR TO LAY NEW DN160 PE SEWER RETICULATION LINE 16 AND CONNECT TO EXISTING STUB. AFTER CLEANSING, TESTING AND INSPECTION, NOTIFY UNITYWATER.	DN160	5/15	MS	B	-	22.434	22.434	18.986	3.538
1(B)	AFTER NEW WORKS ACCEPTED "ON MAINTENANCE" CONTRACTOR TO REMOVE PLUG FROM EXISTING MANHOLE EX5/15 (OR AS AGREED WITH UNITYWATER).	DN160	5/15	MS	B	-	22.434	22.434	18.986	3.538
2(A)	FROM EXISTING MAINTENANCE HOLE EX1/17, CONTRACTOR TO LAY NEW DN160 PE SEWER RETICULATION LINE 36 AND CONNECT TO EXISTING STUB. AFTER CLEANSING, TESTING AND INSPECTION, NOTIFY UNITYWATER.	DN160	1/17	MS	D	-	20.626	20.626	18.800	1.826
2(B)	AFTER NEW WORKS ACCEPTED "ON MAINTENANCE" CONTRACTOR TO REMOVE PLUG FROM EXISTING MANHOLE EX1/17 (OR AS AGREED WITH UNITYWATER).	DN160	1/17	MS	D	-	20.626	20.626	18.800	1.826
3(A)	FROM EXISTING MAINTENANCE HOLE EX3/17, CONTRACTOR TO LAY NEW DN160 PE SEWER RETICULATION LINE 38 AND CONNECT TO EXISTING STUB. AFTER CLEANSING, TESTING AND INSPECTION, NOTIFY UNITYWATER.	DN160	3/17	MS	D	-	20.953	20.953	18.152	2.801
3(B)	AFTER NEW WORKS ACCEPTED "ON MAINTENANCE" CONTRACTOR TO REMOVE PLUG FROM EXISTING MANHOLE EX3/17 (OR AS AGREED WITH UNITYWATER).	DN160	3/17	MS	D	-	20.953	20.953	18.152	2.801
4(A)	FROM EXISTING MAINTENANCE HOLE EX6/18, CONTRACTOR TO LAY NEW DN160 PE SEWER RETICULATION LINE 42 AND CONNECT TO EXISTING STUB. AFTER CLEANSING, TESTING AND INSPECTION, NOTIFY UNITYWATER.	DN160	6/18	MS	D	-	20.560	20.560	16.884	3.676
4(B)	AFTER NEW WORKS ACCEPTED "ON MAINTENANCE" CONTRACTOR TO REMOVE PLUG FROM EXISTING MANHOLE EX6/18 (OR AS AGREED WITH UNITYWATER).	DN160	6/18	MS	D	-	20.560	20.560	16.884	3.676

CAUTION !! UNDERGROUND ELECTRICAL CABLES	CAUTION !! UNDERGROUND SEWER MAINS	CAUTION !! UNDERGROUND WATER RETICULATION	CAUTION !! UNDERGROUND GAS MAINS	CAUTION !! UNDERGROUND TELECOMMS CABLES
UNDERGROUND ELECTRICITY CABLES EXIST IN THIS VICINITY. CONTACT ENERGEX FOR CABLE LOCATIONS. EXTREME CARE MUST BE TAKEN WHILST EXCAVATING	UNDERGROUND SEWER MAINS EXIST IN THIS VICINITY. CONTACT SUPPLIER FOR SERVICE LOCATIONS. EXTREME CARE MUST BE TAKEN WHILST EXCAVATING.	UNDERGROUND WATER MAINS EXIST IN THIS VICINITY. CONTACT SUPPLIER FOR WATER MAIN LOCATIONS. EXTREME CARE MUST BE TAKEN WHILST EXCAVATING	UNDERGROUND GAS MAINS EXIST IN THIS VICINITY. CONTACT SUPPLIER FOR SERVICE LOCATIONS. EXTREME CARE MUST BE TAKEN WHILST EXCAVATING.	UNDERGROUND TELECOMMUNICATION CABLES EXIST IN THIS VICINITY. CONTACT SUPPLIER FOR CABLE LOCATIONS. EXTREME CARE MUST BE TAKEN WHILST EXCAVATING.

INITIAL ISSUE	DES	DRN	CHK	APP	DATE	AMENDMENT DETAILS
AA	RT	AA	RA	15.09.23		
A	AA	RT	AA	MH	12.03.24	ISSUED FOR APPROVAL

FOR APPROVAL

APPROVED
 BY: MAX HOOPER NO: 16633
 SIGN: *[Signature]* DATE: 12.03.24

SCALE

1:1500 30 20 10 0 30 60m A1
 1:3000

egis

© 2023 Egis Consulting Pty Ltd
 www.egis-group.com

LENNIUM
GROUP

Lilywood
LANDINGS
STAGE 3

SEWER RETICULATION COVER SHEET		
PROJECT No.	DRAWING No.	REVISION
22-000082_3	1500	A