

ADDITIONAL NOTES:

The Lot dimensions and area shown hereon are subject to final field survey and also to the requirements of Council and any other authority which may have requirements under any relevant legislation

Final surface contours shown hereon have been supplied by Egis.

Compaction of any fill material placed on this site shall be completed to level one inspection and testing services in accordance with AS3798-2007.

Depth of fill values are calculated to the lower of the pre-development surface and the ground surface from Survey.

Copyright © Veris Australia Pty Ltd February 2025.

LEGEND

Final surface contours based on A.H.D. datum at an interval of 0.5m, shown as: — 15.5 —

Where applicable, areas to be filled are shown as:

Depth of fill, in metres, shown as:- +0.5

Retaining wall and retaining wall height, shown on the lower side of the wall, have been calculated from digital data supplied by Egis and shown as:

(1.2)

Lilywood Landings Stage 5 For Lennium Group

IMPORTANT NOTES:

(These notes are an integral part of this plan)

This plan has been prepared for Lennium Group for the purposes of A Disclosure Plan Under the Land Sales Act 1984 (as amended).

It is not to be used by any other person or corporation or for any other purposes and is subject to the following limitations:

Please refer to the approved Development Application for conditions relating to the LOT and to approved Operational Works drawings for services location and possible easements.

THESE DESIGNS AND DRAWINGS ARE COPYRIGHT AND ARE NOT TO BE USED OR REPRODUCED WITHOUT THE WRITTEN PERMISSION OF VERIS

Data Sources

Cadastral Boundaries: 401871-LC01-L.dwg

Engineering Design: X_22-000082_5_BASE-20250130.dwg

Final Surface Contours: 22-000082-5-12-tin-design-20250130.dwg

Depth of Fill: 22-000082-5-12-depth-contour-0.1m-20250130.dwg

Retaining Walls: 22-000082_5-COMBINED-20250123.pdf

Issue	Revisions	Date	Drawn
A	Original	6/02/2025	TEM

Locality: Lilywood
Local Authority: Moreton Bay C. C.
Horizontal Meridian: MGA Zone56
Vertical Level Datum: AHD
Scale: 1:250 @ A4
Designed: Egis
Drawn: TEM 6/02/2025
Checked: DC
Plot Date: 11 Feb, 2025
Computer File Ref: 401871-S15-DP(A).dwg

DISCLOSURE PLAN
of Proposed Lot 181
being part of
Lot 9000
on SP347803



veris

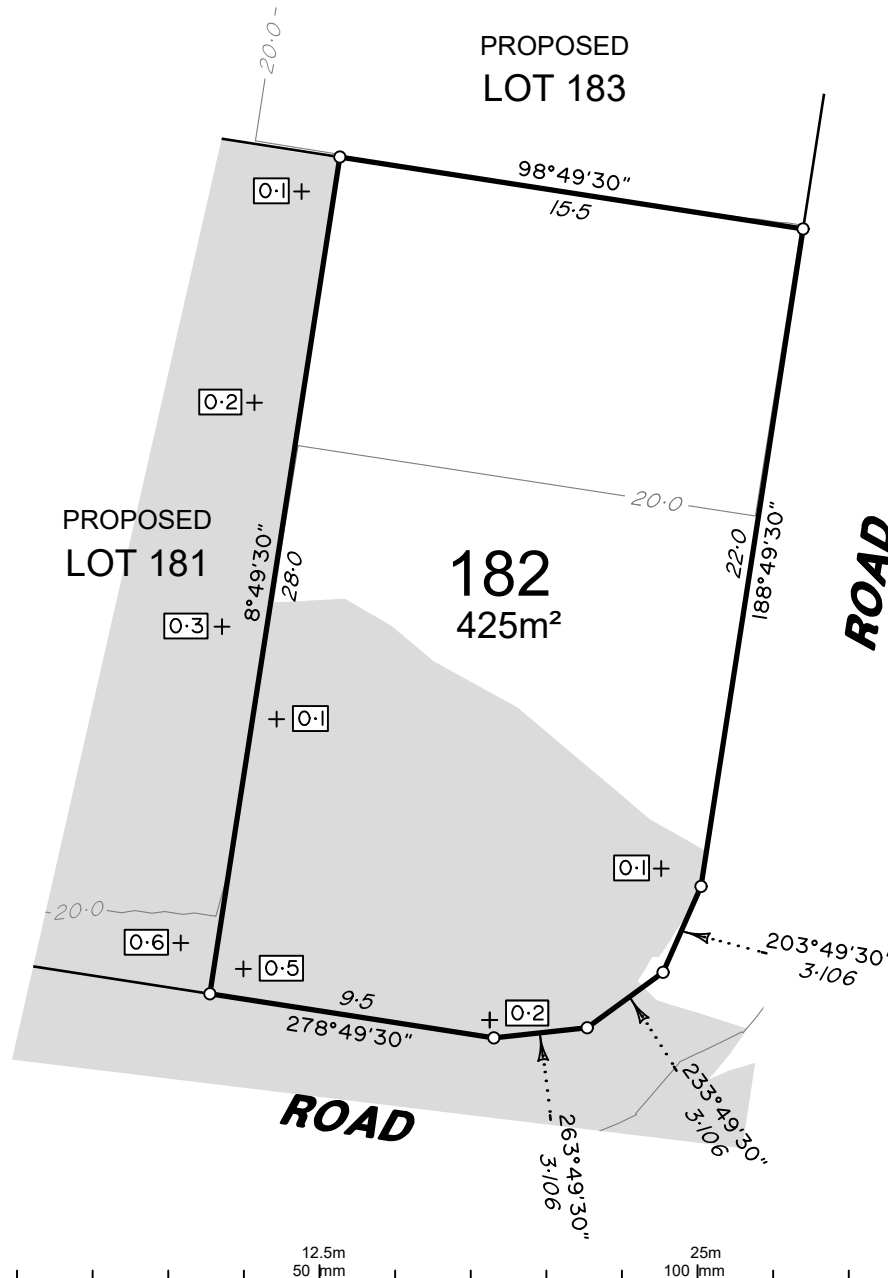
BRISBANE (07) 3666 4700 WHITSUNDAYS (07) 4945 6600

MACKAY (07) 4957 9700 CAIRNS (07) 4252 9400

veris.com.au
ACN 615 735 727
Veris Australia Pty Ltd

Drawing No 401871-DP181 Issue A

0 12.5m 50 mm 25m 100 mm 37.5m 150 mm SCALE BAR



ADDITIONAL NOTES:

The Lot dimensions and area shown hereon are subject to final field survey and also to the requirements of Council and any other authority which may have requirements under any relevant legislation

Final surface contours shown hereon have been supplied by Egis.

Compaction of any fill material placed on this site shall be completed to level one inspection and testing services in accordance with AS3798-2007.

Depth of fill values are calculated to the lower of the pre-development surface and the ground surface from Survey.

Copyright © Veris Australia Pty Ltd February 2025.

LEGEND

Final surface contours based on A.H.D. datum at an interval of 0.5m, shown as: — 15.5 —

Where applicable, areas to be filled are shown as:

Depth of fill, in metres, shown as: + 0.5

Retaining wall and retaining wall height, shown on the lower side of the wall, have been calculated from digital data supplied by Egis and shown as:

(1.2)

Lilywood Landings Stage 5 For Lennium Group

IMPORTANT NOTES:

(These notes are an integral part of this plan)

This plan has been prepared for Lennium Group for the purposes of A Disclosure Plan Under the Land Sales Act 1984 (as amended).

It is not to be used by any other person or corporation or for any other purposes and is subject to the following limitations:

Please refer to the approved Development Application for conditions relating to the LOT and to approved Operational Works drawings for services location and possible easements.

THESE DESIGNS AND DRAWINGS ARE COPYRIGHT AND ARE NOT TO BE USED OR REPRODUCED WITHOUT THE WRITTEN PERMISSION OF VERIS

Data Sources

Cadastral Boundaries: 401871-LC01-L.dwg

Engineering Design: X_22-000082_5_BASE-20250130.dwg

Final Surface Contours: 22-000082-5-12-tin-design-20250130.dwg

Depth of Fill: 22-000082-5-12-depth-contour-0.1m-20250130.dwg

Retaining Walls: 22-000082_5-COMBINED-20250123.pdf

22-000082_5-COMBINED-20250123.pdf

A Original 6/02/2025 TEM

Issue Revisions Date Drawn

Locality: Lilywood

Local Authority: Moreton Bay C. C.

Horizontal Meridian: MGA Zone56

Vertical Level Datum: AHD

Scale: 1:250 @ A4

Designed: Egis

Drawn: TEM 6/02/2025

Checked: DC

Plot Date: 11 Feb, 2025

Computer File Ref: 401871-S15-DP(A).dwg

DISCLOSURE PLAN
of Proposed Lot 182
being part of
Lot 9000
on SP347803



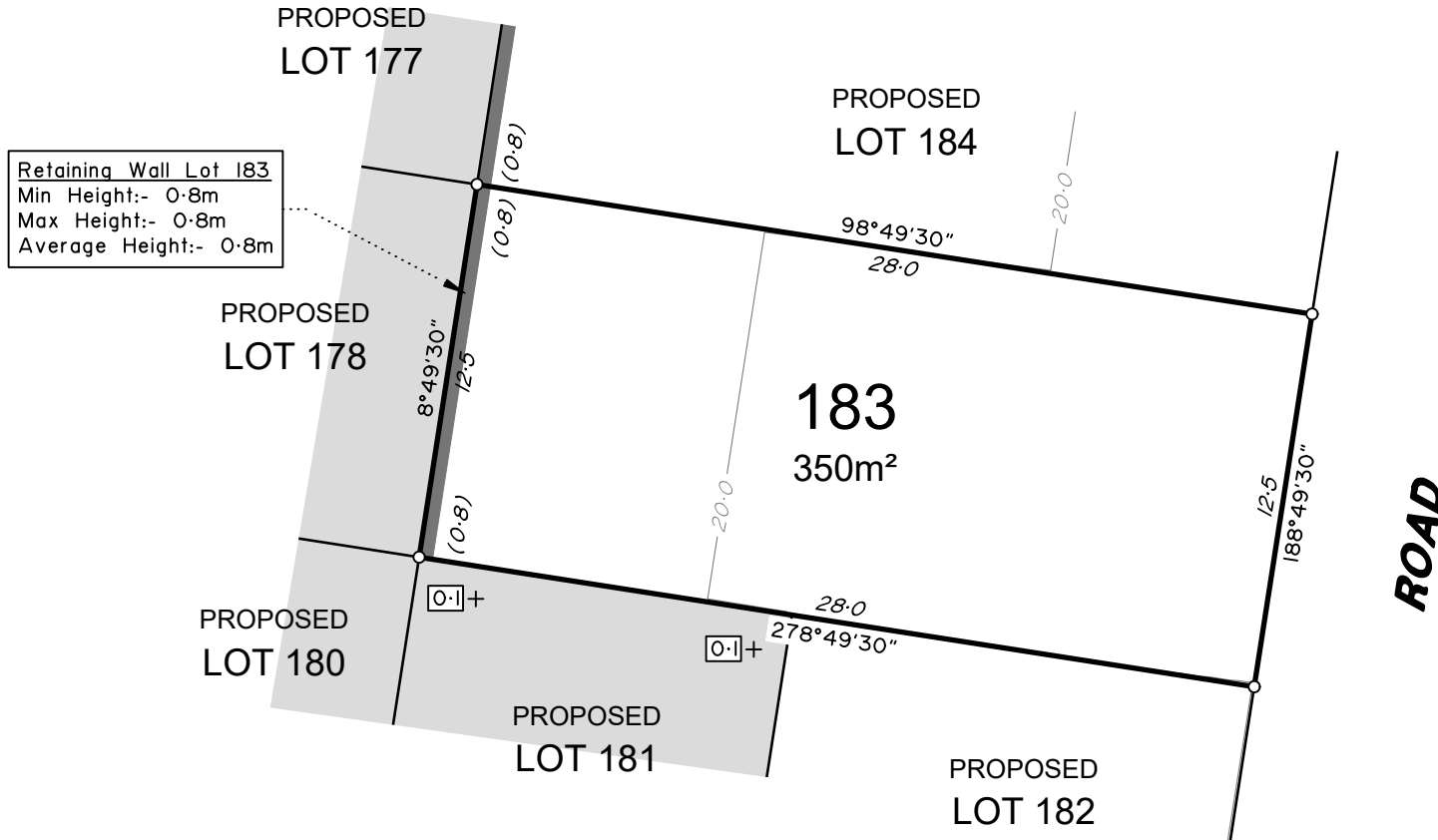
veris

BRISBANE WHITSUNDAYS
(07) 3666 4700 (07) 4945 6600

MACKAY CAIRNS
(07) 4957 9700 (07) 4252 9400

veris.com.au
ACN 615 735 727
Veris Australia Pty Ltd

Drawing No Issue
401871-DP182 A



ADDITIONAL NOTES:

The Lot dimensions and area shown hereon are subject to final field survey and also to the requirements of Council and any other authority which may have requirements under any relevant legislation

Final surface contours shown hereon have been supplied by Egis.

Compaction of any fill material placed on this site shall be completed to level one inspection and testing services in accordance with AS3798-2007.

Depth of fill values are calculated to the lower of the pre-development surface and the ground surface from Survey.

Copyright © Veris Australia Pty Ltd February 2025.

LEGEND

Final surface contours based on A.H.D. datum at an interval of 0.5m, shown as: — 15.5 —

Where applicable, areas to be filled are shown as:

Depth of fill, in metres, shown as:- +0.5

Retaining wall and retaining wall height, shown on the lower side of the wall, have been calculated from digital data supplied by Egis and shown as:

(1.2)

Lilywood Landings Stage 5 For Lennium Group

IMPORTANT NOTES:

(These notes are an integral part of this plan)

This plan has been prepared for Lennium Group for the purposes of A Disclosure Plan Under the Land Sales Act 1984 (as amended).

It is not to be used by any other person or corporation or for any other purposes and is subject to the following limitations:

Please refer to the approved Development Application for conditions relating to the LOT and to approved Operational Works drawings for services location and possible easements.

THESE DESIGNS AND DRAWINGS ARE COPYRIGHT AND ARE NOT TO BE USED OR REPRODUCED WITHOUT THE WRITTEN PERMISSION OF VERIS

Data Sources

Cadastral Boundaries: 401871-LC01-L.dwg

Engineering Design: X_22-000082_5_BASE-20250130.dwg

Final Surface Contours: 22-000082-5-12-tin-design-20250130.dwg

Depth of Fill: 22-000082-5-12-depth-contour-0.1m-20250130.dwg

Retaining Walls: 22-000082_5-COMBINED-20250123.pdf

Issue	Revisions	Date	Drawn
A	Original	6/02/2025	TEM

Locality: Lilywood
Local Authority: Moreton Bay C. C.
Horizontal Meridian: MGA Zone56
Vertical Level Datum: AHD
Scale: 1:250 @ A4
Designed: Egis
Drawn: TEM 6/02/2025
Checked: DC
Plot Date: 11 Feb, 2025
Computer File Ref: 401871-SIS-DP(A).dwg

DISCLOSURE PLAN
of Proposed Lot 183
being part of
Lot 9000
on SP347803



veris

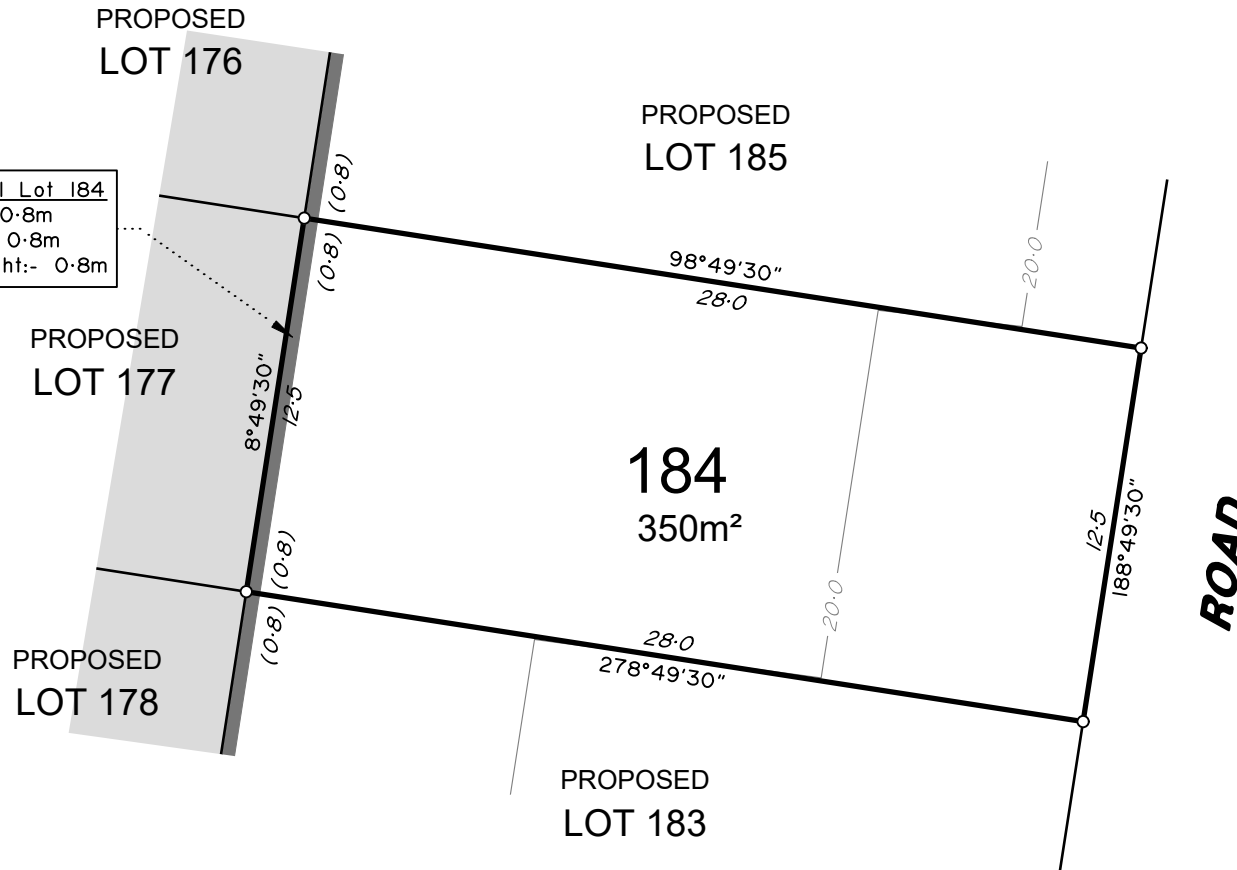
BRISBANE (07) 3666 4700 WHITSUNDAYS (07) 4945 6600

MACKAY (07) 4957 9700 CAIRNS (07) 4252 9400

veris.com.au
ACN 615 735 727
Veris Australia Pty Ltd

Drawing No 401871-DP183 Issue A





ADDITIONAL NOTES:

The Lot dimensions and area shown hereon are subject to final field survey and also to the requirements of Council and any other authority which may have requirements under any relevant legislation


Final surface contours shown hereon have been supplied by Egis.


Compaction of any fill material placed on this site shall be completed to level one inspection and testing services in accordance with AS3798-2007.

Depth of fill values are calculated to the lower of the pre-development surface and the ground surface from Survey.


Copyright © Veris Australia Pty Ltd February 2025.

LEGEND

Final surface contours based on A.H.D. datum at an interval of 0.5m, shown as:  15.5

Where applicable, areas to be filled are shown as: 

Depth of fill, in metres, shown as:- + 0.5

Retaining wall and retaining wall height, shown on the lower side of the wall, have been calculated from digital data supplied by Egis and shown as:  (1.2)

0 12.5m 50 mm 25m 100 mm 37.5m 150 mm SCALE BAR

Lilywood Landings Stage 5 For Lennium Group

IMPORTANT NOTES:

(These notes are an integral part of this plan)

This plan has been prepared for Lennium Group for the purposes of A Disclosure Plan Under the Land Sales Act 1984 (as amended).

It is not to be used by any other person or corporation or for any other purposes and is subject to the following limitations:

Please refer to the approved Development Application for conditions relating to the LOT and to approved Operational Works drawings for services location and possible easements.

THESE DESIGNS AND DRAWINGS ARE COPYRIGHT AND ARE NOT TO BE USED OR REPRODUCED WITHOUT THE WRITTEN PERMISSION OF VERIS

Data Sources

Cadastral Boundaries: 401871-LC01-L.dwg
Engineering Design: X_22-000082_5_BASE-20250130.dwg
Final Surface Contours: 22-000082-5-12-tin-design-20250130.dwg
Depth of Fill: 22-000082-5-12-depth-contour-0.1m-20250130.dwg
Retaining Walls: 22-000082_5-COMBINED-20250123.pdf

Issue	Revisions	Date	Drawn
A	Original	6/02/2025	TEM

Locality: Lilywood
Local Authority: Moreton Bay C. C.
Horizontal Meridian: MGA Zone56
Vertical Level Datum: AHD
Scale: 1:250 @ A4
Designed: Egis
Drawn: TEM 6/02/2025
Checked: DC
Plot Date: 11 Feb, 2025
Computer File Ref: 401871-SIS-DP(A).dwg

DISCLOSURE PLAN
of Proposed Lot 184
being part of
Lot 9000
on SP347803



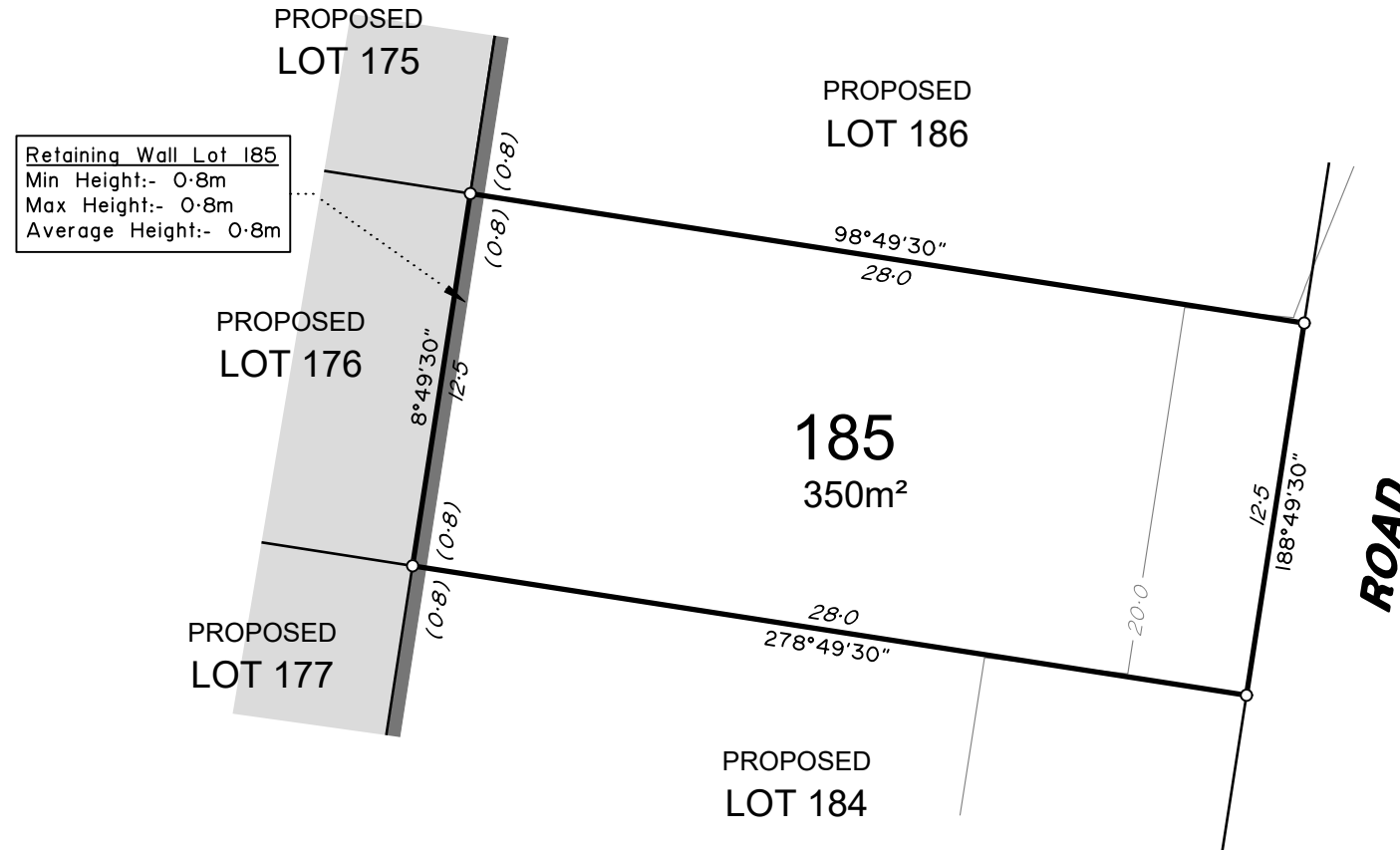
veris

BRISBANE (07) 3666 4700 WHITSUNDAYS (07) 4945 6600

MACKAY (07) 4957 9700 CAIRNS (07) 4252 9400

veris.com.au
ACN 615 735 727
Veris Australia Pty Ltd

Drawing No 401871-DP184 Issue A



ADDITIONAL NOTES:

The Lot dimensions and area shown hereon are subject to final field survey and also to the requirements of Council and any other authority which may have requirements under any relevant legislation

Final surface contours shown hereon have been supplied by Egis.

Compaction of any fill material placed on this site shall be completed to level one inspection and testing services in accordance with AS3798-2007.

Depth of fill values are calculated to the lower of the pre-development surface and the ground surface from Survey.

Copyright © Veris Australia Pty Ltd February 2025.

LEGEND

Final surface contours based on A.H.D. datum at an interval of 0.5m, shown as: — 15.5 —

Where applicable, areas to be filled are shown as:

Depth of fill, in metres, shown as:- +0.5

Retaining wall and retaining wall height, shown on the lower side of the wall, have been calculated from digital data supplied by Egis and shown as:

Lilywood Landings Stage 5 For Lennium Group

IMPORTANT NOTES:

(These notes are an integral part of this plan)

This plan has been prepared for Lennium Group for the purposes of A Disclosure Plan Under the Land Sales Act 1984 (as amended).

It is not to be used by any other person or corporation or for any other purposes and is subject to the following limitations:

Please refer to the approved Development Application for conditions relating to the LOT and to approved Operational Works drawings for services location and possible easements.

THESE DESIGNS AND DRAWINGS ARE COPYRIGHT AND ARE NOT TO BE USED OR REPRODUCED WITHOUT THE WRITTEN PERMISSION OF VERIS

Data Sources

Cadastral Boundaries: 401871-LC01-L.dwg

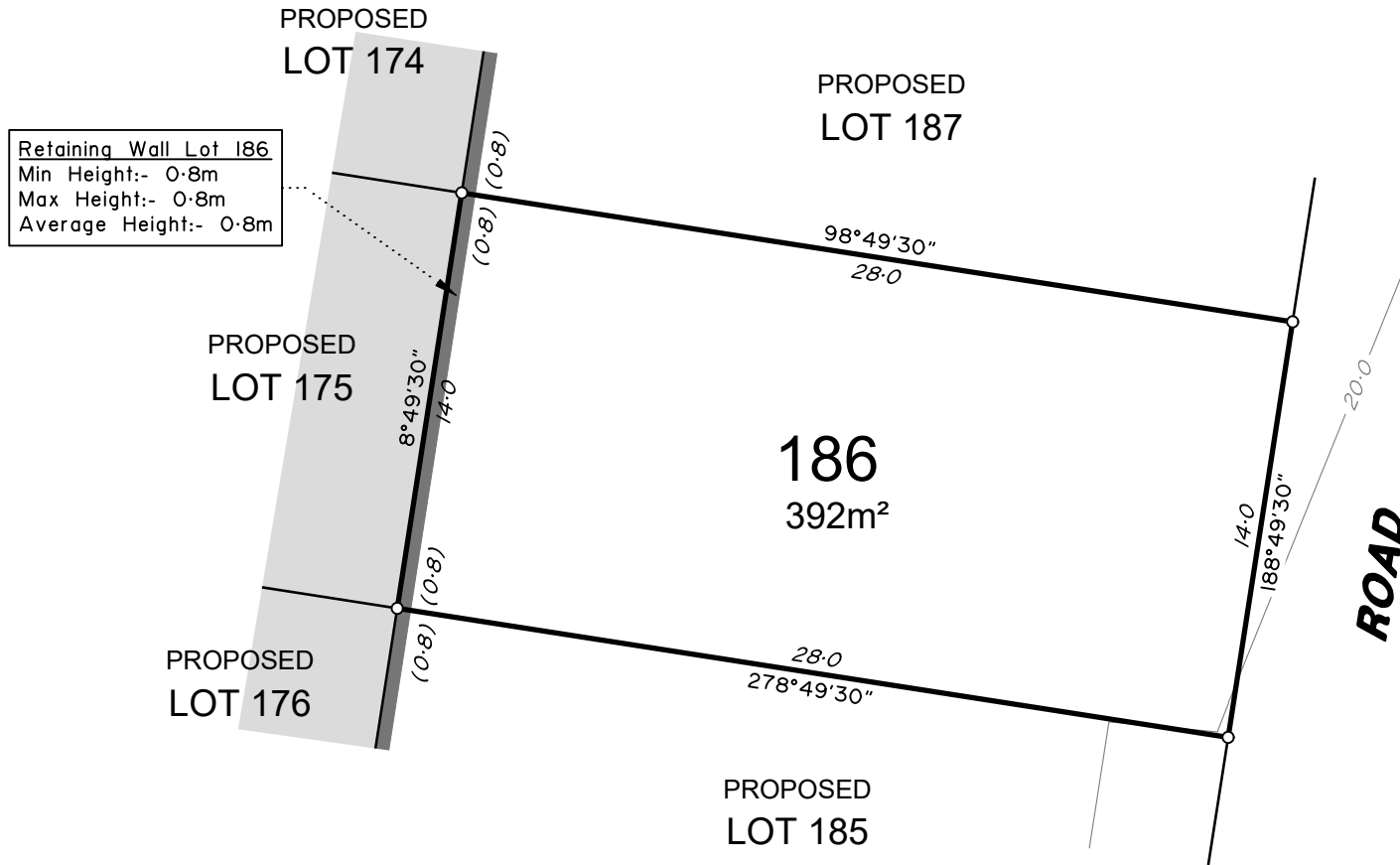
Engineering Design: X_22-000082_5_BASE-20250130.dwg

Final Surface Contours: 22-000082-5-12-tin-design-20250130.dwg

Depth of Fill: 22-000082-5-12-depth-contour-0.1m-20250130.dwg

Retaining Walls: 22-000082_5-COMBINED-20250123.pdf

22-000082_5-COMBINED-20250123.pdf



Retaining Wall Lot 186
Min Height:- 0.8m
Max Height:- 0.8m
Average Height:- 0.8m

ADDITIONAL NOTES:

The Lot dimensions and area shown hereon are subject to final field survey and also to the requirements of Council and any other authority which may have requirements under any relevant legislation

Final surface contours shown hereon have been supplied by Egis.

Compaction of any fill material placed on this site shall be completed to level one inspection and testing services in accordance with AS3798-2007.

Depth of fill values are calculated to the lower of the pre-development surface and the ground surface from Survey.

Copyright © Veris Australia Pty Ltd February 2025.

LEGEND

Final surface contours based on A.H.D. datum at an interval of 0.5m, shown as: — 15.5 —

Where applicable, areas to be filled are shown as:

Depth of fill, in metres, shown as:- +[0.5]

Retaining wall and retaining wall height, shown on the lower side of the wall, have been calculated from digital data supplied by Egis and shown as:

(1.2)

Lilywood Landings Stage 5 For Lennium Group

IMPORTANT NOTES:

(These notes are an integral part of this plan)

This plan has been prepared for Lennium Group for the purposes of A Disclosure Plan Under the Land Sales Act 1984 (as amended).

It is not to be used by any other person or corporation or for any other purposes and is subject to the following limitations:

Please refer to the approved Development Application for conditions relating to the LOT and to approved Operational Works drawings for services location and possible easements.

THESE DESIGNS AND DRAWINGS ARE COPYRIGHT AND ARE NOT TO BE USED OR REPRODUCED WITHOUT THE WRITTEN PERMISSION OF VERIS

Data Sources

Cadastral Boundaries: 401871-LC01-L.dwg

Engineering Design: X_22-000082_5_BASE-20250130.dwg

Final Surface Contours: 22-000082-5-12-tin-design-20250130.dwg

Depth of Fill: 22-000082-5-12-depth-contour-0.1m-20250130.dwg

Retaining Walls: 22-000082_5-COMBINED-20250123.pdf

22-000082_5-COMBINED-20250123.pdf

22-000082_5-COMBINED-20250123.pdf

22-000082_5-COMBINED-20250123.pdf

22-000082_5-COMBINED-20250123.pdf

22-000082_5-COMBINED-20250123.pdf

22-000082_5-COMBINED-20250123.pdf

22-000082_5-COMBINED-20250123.pdf

22-000082_5-COMBINED-20250123.pdf

22-000082_5-COMBINED-20250123.pdf

22-000082_5-COMBINED-20250123.pdf

22-000082_5-COMBINED-20250123.pdf

22-000082_5-COMBINED-20250123.pdf

22-000082_5-COMBINED-20250123.pdf

22-000082_5-COMBINED-20250123.pdf

22-000082_5-COMBINED-20250123.pdf

22-000082_5-COMBINED-20250123.pdf

22-000082_5-COMBINED-20250123.pdf

22-000082_5-COMBINED-20250123.pdf

22-000082_5-COMBINED-20250123.pdf

22-000082_5-COMBINED-20250123.pdf

22-000082_5-COMBINED-20250123.pdf

22-000082_5-COMBINED-20250123.pdf

22-000082_5-COMBINED-20250123.pdf

22-000082_5-COMBINED-20250123.pdf

22-000082_5-COMBINED-20250123.pdf

22-000082_5-COMBINED-20250123.pdf

22-000082_5-COMBINED-20250123.pdf

22-000082_5-COMBINED-20250123.pdf

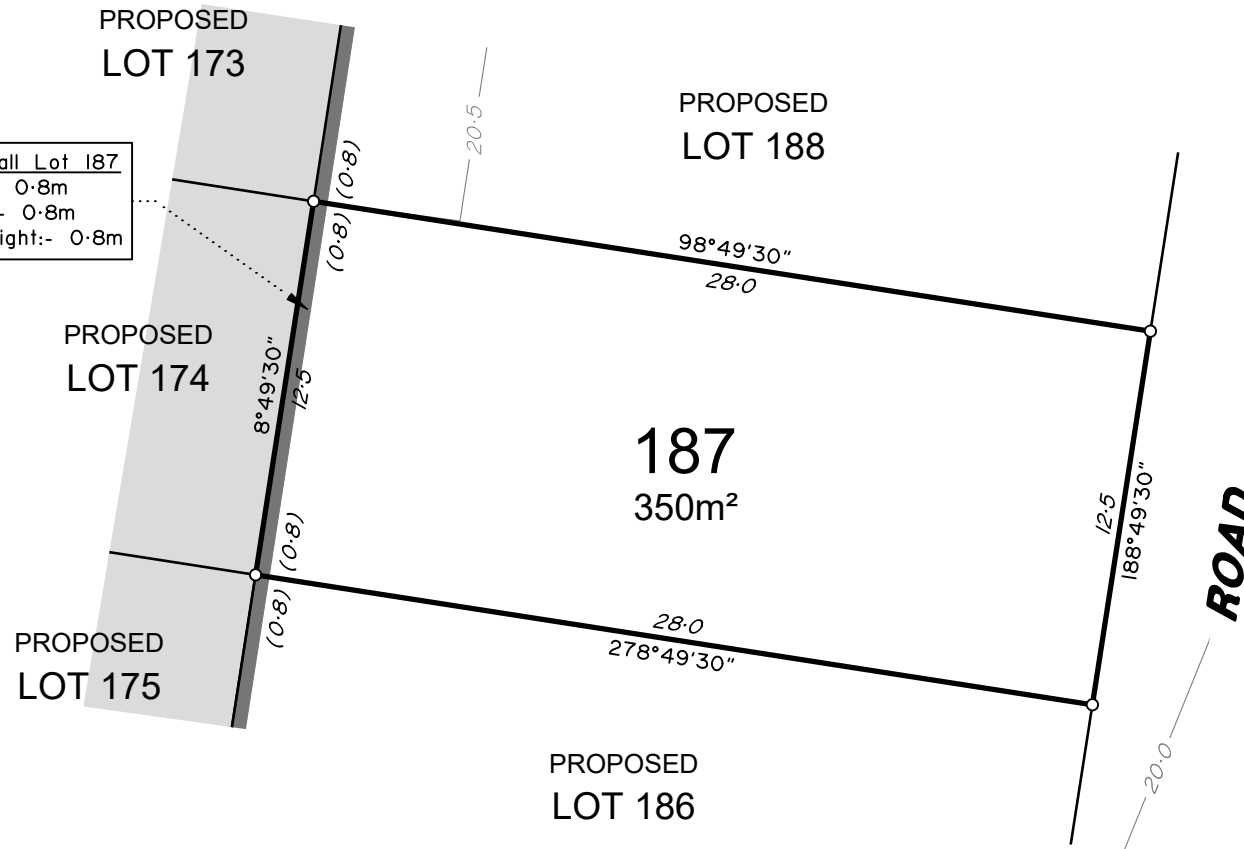
22-000082_5-COMBINED-20250123.pdf

22-000082_5-COMBINED-20250123.pdf

22-000082_5-COMBINED-20250123.pdf

22-000082_5-COMBINED-20250123.pdf

22-000082_5-COMBINED-20250123.pdf



Retaining Wall Lot 187
Min Height:- 0.8m
Max Height:- 0.8m
Average Height:- 0.8m

ADDITIONAL NOTES:

The Lot dimensions and area shown hereon are subject to final field survey and also to the requirements of Council and any other authority which may have requirements under any relevant legislation


Final surface contours shown hereon have been supplied by Egis.


Compaction of any fill material placed on this site shall be completed to level one inspection and testing services in accordance with AS3798-2007.

Depth of fill values are calculated to the lower of the pre-development surface and the ground surface from Survey.


Copyright © Veris Australia Pty Ltd February 2025.

LEGEND

Final surface contours based on A.H.D. datum at an interval of 0.5m, shown as: 

Where applicable, areas to be filled are shown as: 

Depth of fill, in metres, shown as:- 

Retaining wall and retaining wall height, shown on the lower side of the wall, have been calculated from digital data supplied by Egis and shown as: 

Lilywood Landings Stage 5 For Lennium Group

IMPORTANT NOTES:
(These notes are an integral part of this plan)
This plan has been prepared for Lennium Group for the purposes of A Disclosure Plan Under the Land Sales Act 1984 (as amended).
It is not to be used by any other person or corporation or for any other purposes and is subject to the following limitations:

Please refer to the approved Development Application for conditions relating to the LOT and to approved Operational Works drawings for services location and possible easements.

THESE DESIGNS AND DRAWINGS ARE COPYRIGHT AND ARE NOT TO BE USED OR REPRODUCED WITHOUT THE WRITTEN PERMISSION OF VERIS

Data Sources
Cadastral Boundaries: 401871-LC01-L.dwg
Engineering Design: X_22-000082_5_BASE-20250130.dwg
Final Surface Contours: 22-000082-5-12-tin-design-20250130.dwg
Depth of Fill: 22-000082-5-12-depth-contour-0.1m-20250130.dwg
Retaining Walls: 22-000082_5-COMBINED-20250123.pdf

Issue	Revisions	Date	Drawn
A	Original	6/02/2025	TEM

Locality: Lilywood
Local Authority: Moreton Bay C. C.
Horizontal Meridian: MGA Zone56
Vertical Level Datum: AHD
Scale: 1:250 @ A4
Designed: Egis
Drawn: TEM 6/02/2025
Checked: DC
Plot Date: 11 Feb, 2025
Computer File Ref: 401871-SIS-DP(A).dwg

DISCLOSURE PLAN
of Proposed Lot 187
being part of
Lot 9000
on SP347803



veris

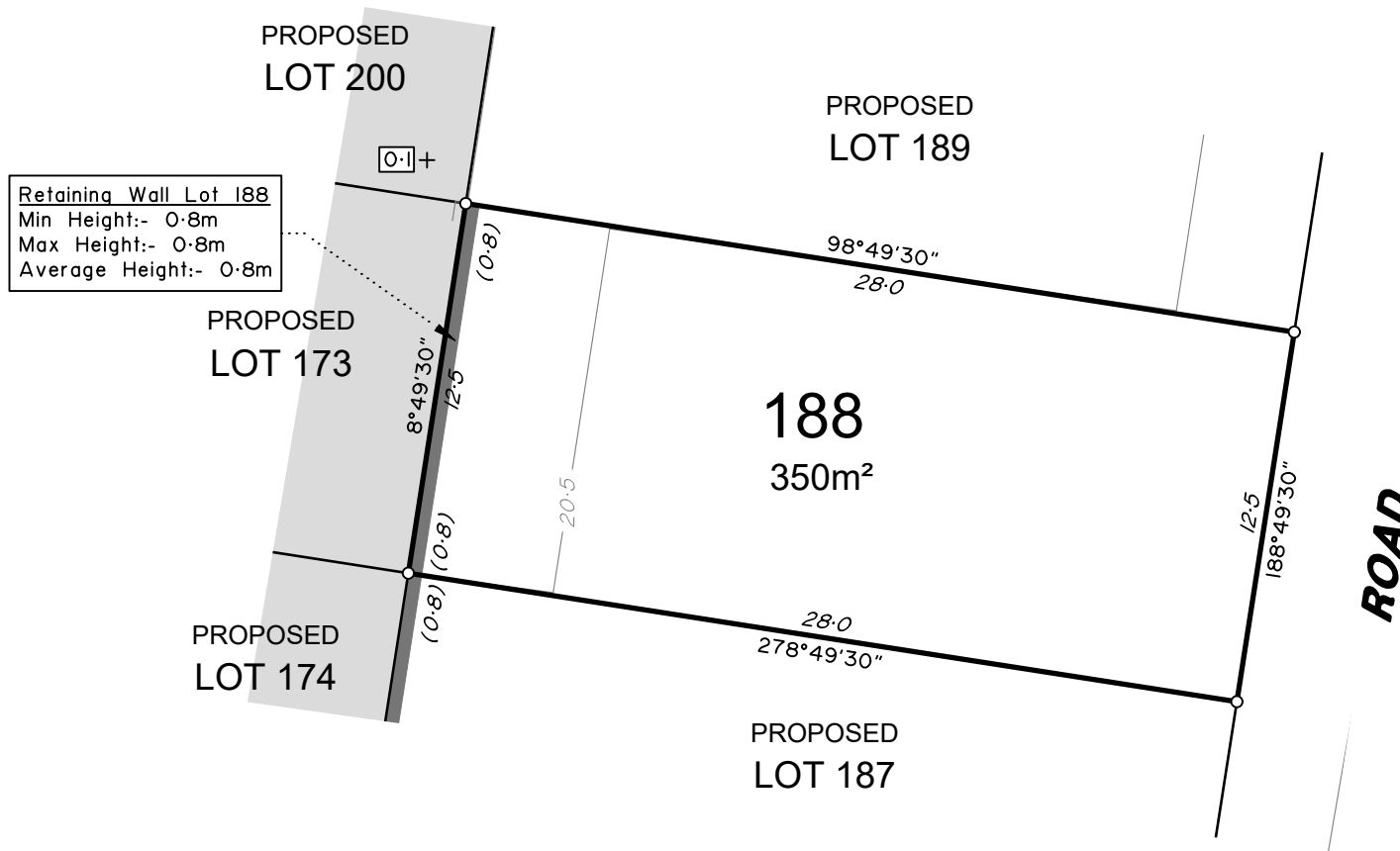
BRISBANE WHITSUNDAYS
(07) 3666 4700 (07) 4945 6600

MACKAY CAIRNS
(07) 4957 9700 (07) 4252 9400

veris.com.au
ACN 615 735 727
Veris Australia Pty Ltd

Drawing No Issue
401871-DP187 A





Retaining Wall Lot 188
Min Height:- 0.8m
Max Height:- 0.8m
Average Height:- 0.8m

ADDITIONAL NOTES:

The Lot dimensions and area shown hereon are subject to final field survey and also to the requirements of Council and any other authority which may have requirements under any relevant legislation


Final surface contours shown hereon have been supplied by Egis.


Compaction of any fill material placed on this site shall be completed to level one inspection and testing services in accordance with AS3798-2007.

Depth of fill values are calculated to the lower of the pre-development surface and the ground surface from Survey.


Copyright © Veris Australia Pty Ltd February 2025.

LEGEND

Final surface contours based on A.H.D. datum at an interval of 0.5m, shown as: 

Where applicable, areas to be filled are shown as: 

Depth of fill, in metres, shown as:- 

Retaining wall and retaining wall height, shown on the lower side of the wall, have been calculated from digital data supplied by Egis and shown as: 

Lilywood Landings Stage 5 For Lennium Group

IMPORTANT NOTES:
(These notes are an integral part of this plan)
This plan has been prepared for Lennium Group for the purposes of A Disclosure Plan Under the Land Sales Act 1984 (as amended).
It is not to be used by any other person or corporation or for any other purposes and is subject to the following limitations:

Please refer to the approved Development Application for conditions relating to the LOT and to approved Operational Works drawings for services location and possible easements.

THESE DESIGNS AND DRAWINGS ARE COPYRIGHT AND ARE NOT TO BE USED OR REPRODUCED WITHOUT THE WRITTEN PERMISSION OF VERIS

Data Sources
Cadastral Boundaries: 401871-LC01-L.dwg
Engineering Design: X_22-000082_5_BASE-20250130.dwg
Final Surface Contours: 22-000082-5-12-tin-design-20250130.dwg
Depth of Fill: 22-000082-5-12-depth-contour-0.1m-20250130.dwg
Retaining Walls: 22-000082_5-COMBINED-20250123.pdf

Issue	Revisions	Date	Drawn
A	Original	6/02/2025	TEM

Locality: Lilywood
Local Authority: Moreton Bay C. C.
Horizontal Meridian: MGA Zone56
Vertical Level Datum: AHD
Scale: 1:250 @ A4
Designed: Egis
Drawn: TEM 6/02/2025
Checked: DC
Plot Date: 11 Feb, 2025
Computer File Ref: 401871-S15-DP(A).dwg

DISCLOSURE PLAN
of Proposed Lot 188
being part of
Lot 9000
on SP347803



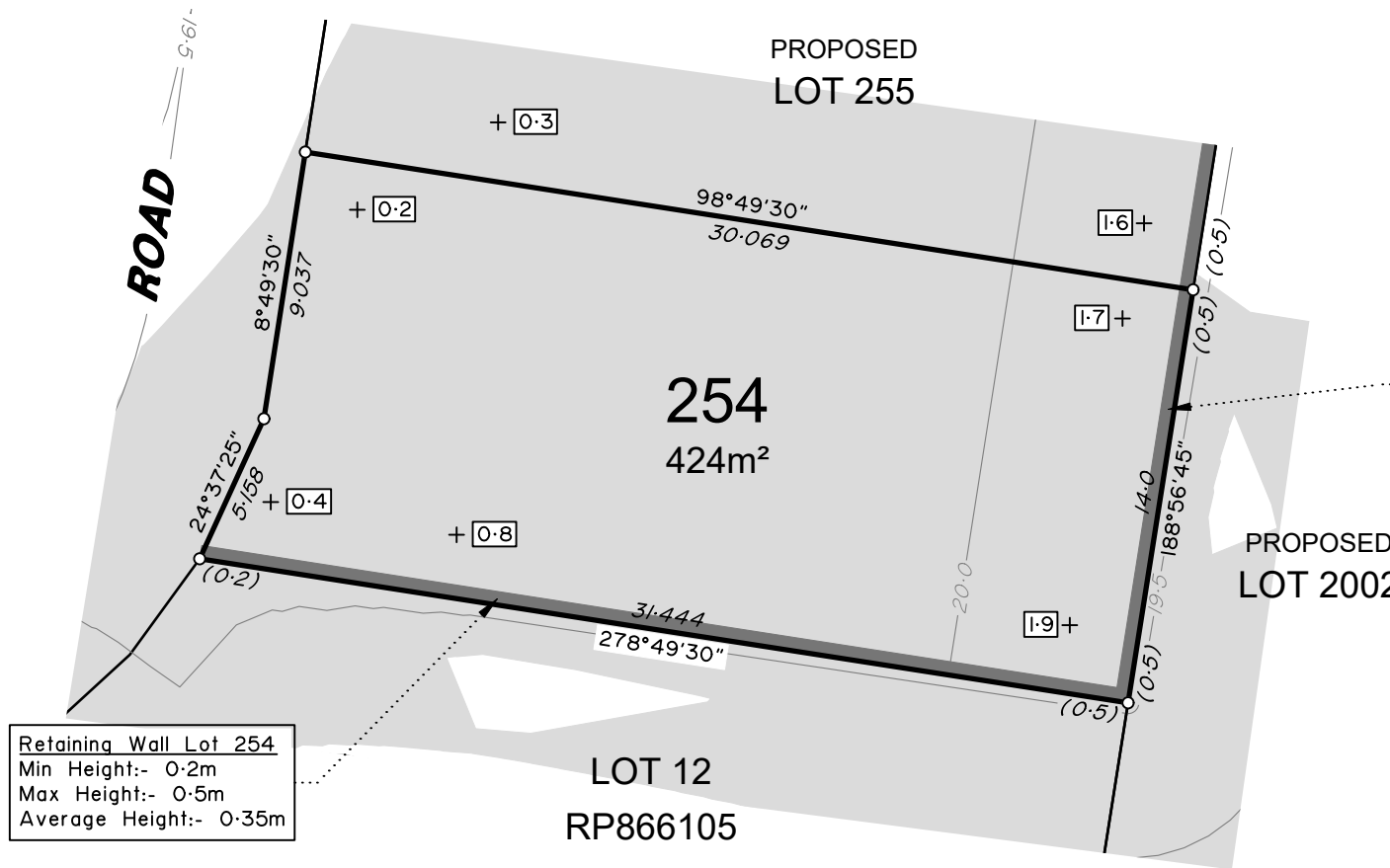
veris

BRISBANE (07) 3666 4700 WHITSUNDAYS (07) 4945 6600

MACKAY (07) 4957 9700 CAIRNS (07) 4252 9400

veris.com.au
ACN 615 735 727
Veris Australia Pty Ltd

Drawing No 401871-DP188 Issue A



Retaining Wall Lot 254
Min Height:- 0.2m
Max Height:- 0.5m
Average Height:- 0.35m

Retaining Wall Lot 254
Min Height:- 0.5m
Max Height:- 0.5m
Average Height:- 0.5m

ADDITIONAL NOTES:

The Lot dimensions and area shown hereon are subject to final field survey and also to the requirements of Council and any other authority which may have requirements under any relevant legislation

Final surface contours shown hereon have been supplied by Egis.

Compaction of any fill material placed on this site shall be completed to level one inspection and testing services in accordance with AS3798-2007.

Depth of fill values are calculated to the lower of the pre-development surface and the ground surface from Survey.

Copyright © Veris Australia Pty Ltd February 2025.

LEGEND

Final surface contours based on A.H.D. datum at an interval of 0.5m, shown as: — 15.5 —

Where applicable, areas to be filled are shown as:

Depth of fill, in metres, shown as:- +0.5

Retaining wall and retaining wall height, shown on the lower side of the wall, have been calculated from digital data supplied by Egis and shown as:

(1.2)

Lilywood Landings Stage 5 For Lennium Group

IMPORTANT NOTES:

(These notes are an integral part of this plan)

This plan has been prepared for Lennium Group for the purposes of A Disclosure Plan Under the Land Sales Act 1984 (as amended).

It is not to be used by any other person or corporation or for any other purposes and is subject to the following limitations:

Please refer to the approved Development Application for conditions relating to the LOT and to approved Operational Works drawings for services location and possible easements.

THESE DESIGNS AND DRAWINGS ARE COPYRIGHT AND ARE NOT TO BE USED OR REPRODUCED WITHOUT THE WRITTEN PERMISSION OF VERIS

Data Sources

Cadastral Boundaries: 401871-LC01-L.dwg

Engineering Design: X_22-000082_5_BASE-20250130.dwg

Final Surface Contours: 22-000082-5-12-tin-design-20250130.dwg

Depth of Fill: 22-000082-5-12-depth-contour-0.1m-20250130.dwg

Retaining Walls: 22-000082_5-COMBINED-20250123.pdf

Issue	Revisions	Date	Drawn
A	Original	6/02/2025	TEM

Locality: Lilywood
Local Authority: Moreton Bay C. C.
Horizontal Meridian: MGA Zone56
Vertical Level Datum: AHD
Scale: 1:250 @ A4
Designed: Egis
Drawn: TEM 6/02/2025
Checked: DC
Plot Date: 11 Feb, 2025
Computer File Ref: 401871-S15-DP(A).dwg

DISCLOSURE PLAN
of Proposed Lot 254
being part of
Lot 9000
on SP347803



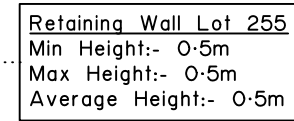
veris

BRISBANE (07) 3666 4700 WHITSUNDAYS (07) 4945 6600

MACKAY (07) 4957 9700 CAIRNS (07) 4252 9400

veris.com.au
ACN 615 735 727
Veris Australia Pty Ltd

Drawing No 401871-DP254 Issue A



Copyright © Veris Australia Pty Ltd February 2025.



LEGEND

Final surface contours based on A.H.D. datum at an interval of 0.5m,
shown as: — 15.5 —

Where applicable, areas to be filled are shown as:

Depth of fill, in metres, shown as:- + 0.5

Retaining wall and retaining wall height, shown on the lower side of the wall, have been calculated from digital data supplied by Egis and shown as:

(1.2)

Lilywood Landings
Stage 5
For
Lennium Group

IMPORTANT NOTES:
(These notes are an integral part of this plan)
This plan has been prepared for Lennium Group for the purposes of A Disclosure Plan Under the Land Sales Act 1984 (as amended).
It is not to be used by any other person or corporation or for any other purposes and is subject to the following limitations:

Please refer to the approved Development Application for conditions relating to the LOT and to approved Operational Works drawings for services location and possible easements.

THESE DESIGNS AND DRAWINGS ARE COPYRIGHT
AND ARE NOT TO BE USED OR REPRODUCED
WITHOUT THE WRITTEN PERMISSION OF VERIS

Data Sources

Cadastral Boundaries: 401871-LC01-L.dwg
Engineering Design: X_22-000082_5_BASE-20250130.dwg
Final Surface Contours: 22-000082-5-12-tin-design-20250130.dwg
Depth of Fill: 22-000082-5-12-depth-contour-0.1m-20250130.dwg
Retaining Walls: 22-000082_5-COMBINED-20250123.pdf

A	Original	6/02/2025	TEM
Issue	Revisions	Date	Drawn

Locality: Lilywood
Local Authority: Moreton Bay C. C.
Horizontal Meridian: MGA Zone56
Vertical Level Datum: AHD
Scale: 1:250 @ A4
Designed: Egis
Drawn: TEM 6/02/2025
Checked: DC
Plot Date: 11 Feb, 2025
Computer File Ref: 401871-S15-DP(A).dwg

DISCLOSURE PLAN
of Proposed Lot 255
being part of
Lot 9000
on SP347803

**veris**

BRISBANE
(07) 3666 4700

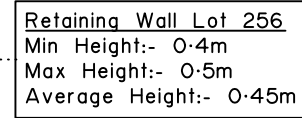
WHITSUNDAYS
(07) 4945 6600

MACKAY
(07) 4957 9700

CAIRNS
(07) 4252 9400

veris.com.au
ACN 615 735 727
Veris Australia Pty Ltd

Drawing No	Issue
401871-DP255	A



Copyright © Veris Australia Pty Ltd February 2025.



LEGEND

Final surface contours based on A.H.D. datum at an interval of 0.5m,
shown as: — 15.5 —

Where applicable, areas to be filled are shown as:

Depth of fill, in metres, shown as:- +0.5

Retaining wall and retaining wall height, shown on the lower side of the wall, have been calculated from digital data supplied by Egis and shown as:

(1.2)

Lilywood Landings
Stage 5
For
Lennium Group

IMPORTANT NOTES:
(These notes are an integral part of this plan)
This plan has been prepared for Lennium Group for the purposes of A Disclosure Plan Under the Land Sales Act 1984 (as amended).
It is not to be used by any other person or corporation or for any other purposes and is subject to the following limitations:

Please refer to the approved Development Application for conditions relating to the LOT and to approved Operational Works drawings for services location and possible easements.

THESE DESIGNS AND DRAWINGS ARE COPYRIGHT
AND ARE NOT TO BE USED OR REPRODUCED
WITHOUT THE WRITTEN PERMISSION OF VERIS

Data Sources

Cadastral Boundaries: 401871-LC01-L.dwg
Engineering Design: X_22-000082_5-BASE-20250130.dwg
Final Surface Contours: 22-000082-5-12-tin-design-20250130.dwg
Depth of Fill: 22-000082-5-12-depth-contour-0.1m-20250130.dwg
Retaining Walls: 22-000082_5-COMBINED-20250123.pdf

A	Original	6/02/2025	TEM
Issue	Revisions	Date	Drawn

Locality:	Lilywood
Local Authority:	Moreton Bay C. C.
Horizontal Meridian:	MGA Zone56
Vertical Level Datum:	AHD
Scale:	1:250 @ A4
Designed:	Egis
Drawn:	TEM 6/02/2025
Checked:	DC
Plot Date:	11 Feb, 2025
Computer File Ref: 401871-S15-DP(A).dwg	

DISCLOSURE PLAN
of Proposed Lot 256
being part of
Lot 9000
on SP347803

**veris**

BRISBANE (07) 3666 4700 **WHITSUNDAYS** (07) 4945 6600

MACKAY
(07) 4957 9700

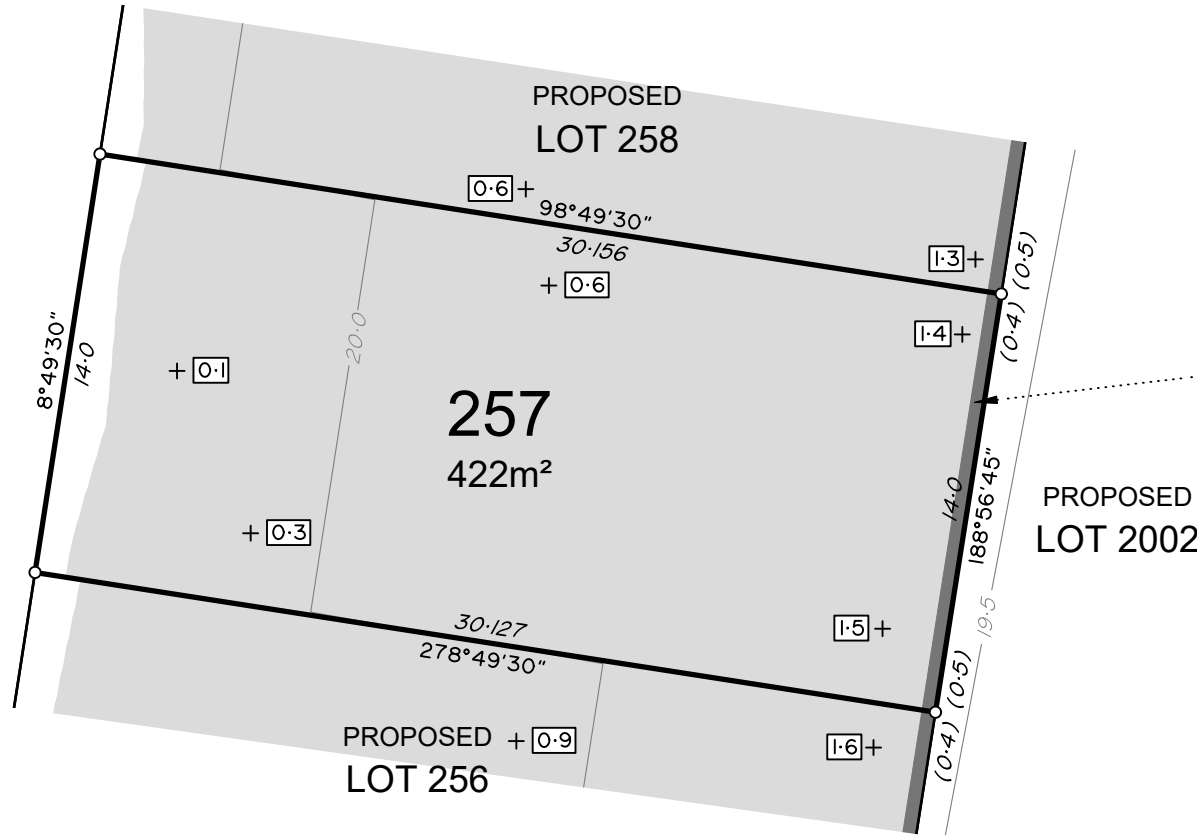
CAIRNS
(07) 4252 9400

veris.com.au
ACN 615 735 727
Veris Australia Pty Ltd

Drawing No	Issue
401871-DP256	A



ROAD



Retaining Wall Lot 257
Min Height:- 0.4m
Max Height:- 0.5m
Average Height:- 0.45m

ADDITIONAL NOTES:

The Lot dimensions and area shown hereon are subject to final field survey and also to the requirements of Council and any other authority which may have requirements under any relevant legislation


Final surface contours shown hereon have been supplied by Egis.


Compaction of any fill material placed on this site shall be completed to level one inspection and testing services in accordance with AS3798-2007.

Depth of fill values are calculated to the lower of the pre-development surface and the ground surface from Survey.


Copyright © Veris Australia Pty Ltd February 2025.

LEGEND

Final surface contours based on A.H.D. datum at an interval of 0.5m, shown as: 

Where applicable, areas to be filled are shown as: 

Depth of fill, in metres, shown as:- 

Retaining wall and retaining wall height, shown on the lower side of the wall, have been calculated from digital data supplied by Egis and shown as: 

Lilywood Landings Stage 5 For Lennium Group

IMPORTANT NOTES:

(These notes are an integral part of this plan)

This plan has been prepared for Lennium Group for the purposes of A Disclosure Plan Under the Land Sales Act 1984 (as amended).

It is not to be used by any other person or corporation or for any other purposes and is subject to the following limitations:

Please refer to the approved Development Application for conditions relating to the LOT and to approved Operational Works drawings for services location and possible easements.

THESE DESIGNS AND DRAWINGS ARE COPYRIGHT AND ARE NOT TO BE USED OR REPRODUCED WITHOUT THE WRITTEN PERMISSION OF VERIS

Data Sources

Cadastral Boundaries: 401871-LC01-L.dwg

Engineering Design: X_22-000082_5_BASE-20250130.dwg

Final Surface Contours: 22-000082-5-12-tin-design-20250130.dwg

Depth of Fill: 22-000082-5-12-depth-contour-0.1m-20250130.dwg

Retaining Walls: 22-000082_5-COMBINED-20250123.pdf

A	Original	6/02/2025	TEM
Issue	Revisions	Date	Drawn

Locality: Lilywood
Local Authority: Moreton Bay C. C.
Horizontal Meridian: MGA Zone56
Vertical Level Datum: AHD
Scale: 1:250 @ A4
Designed: Egis
Drawn: TEM 6/02/2025
Checked: DC
Plot Date: 11 Feb, 2025
Computer File Ref: 401871-SIS-DP(A).dwg

DISCLOSURE PLAN
of Proposed Lot 257
being part of
Lot 9000
on SP347803



veris

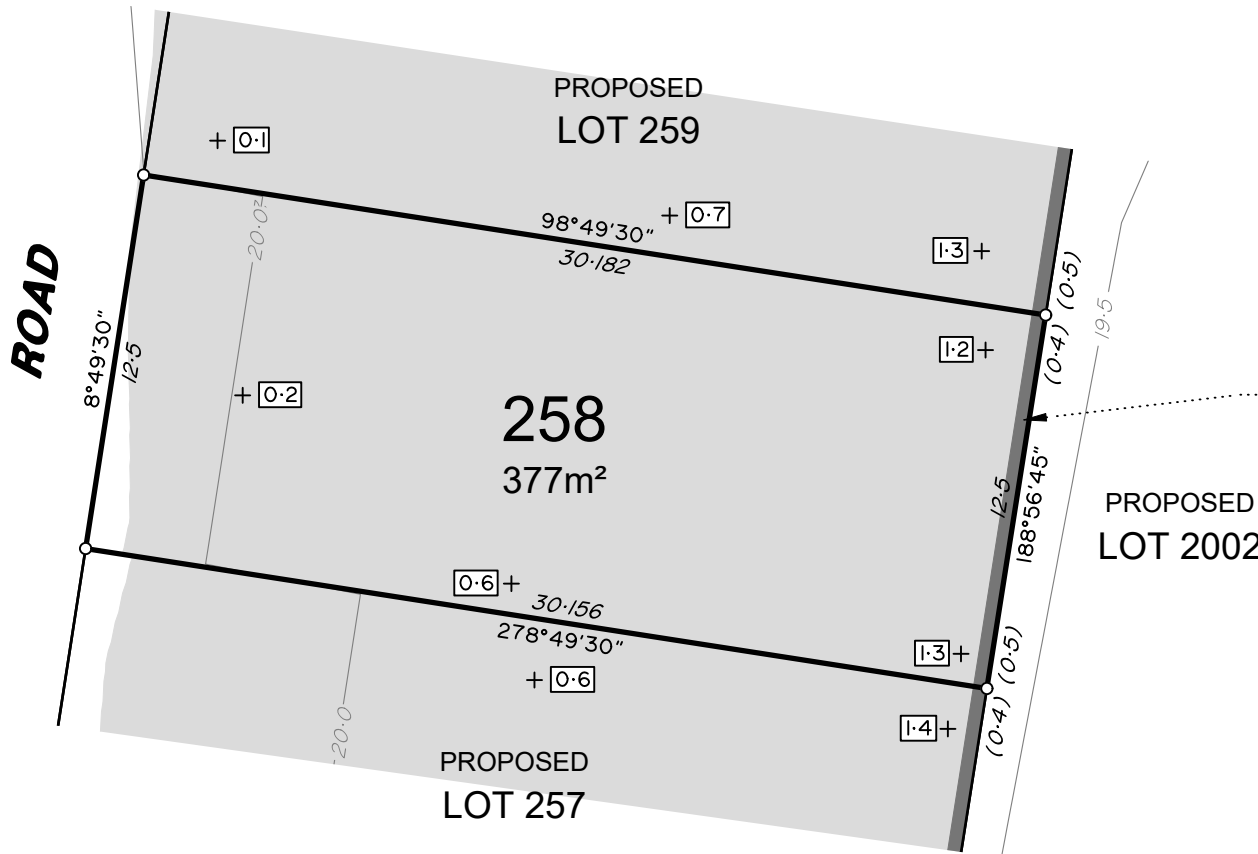
BRISBANE (07) 3666 4700 WHITSUNDAYS (07) 4945 6600

MACKAY (07) 4957 9700 CAIRNS (07) 4252 9400

veris.com.au
ACN 615 735 727
Veris Australia Pty Ltd

Drawing No 401871-DP257 Issue A





ADDITIONAL NOTES:

The Lot dimensions and area shown hereon are subject to final field survey and also to the requirements of Council and any other authority which may have requirements under any relevant legislation


Final surface contours shown hereon have been supplied by Egis.

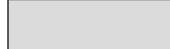
Compaction of any fill material placed on this site shall be completed to level one inspection and testing services in accordance with AS3798-2007.

Depth of fill values are calculated to the lower of the pre-development surface and the ground surface from Survey.


Copyright © Veris Australia Pty Ltd February 2025.

LEGEND

Final surface contours based on A.H.D. datum at an interval of 0.5m, shown as: 

Where applicable, areas to be filled are shown as: 

Depth of fill, in metres, shown as:- 

Retaining wall and retaining wall height, shown on the lower side of the wall, have been calculated from digital data supplied by Egis and shown as: 

Lilywood Landings Stage 5 For Lennium Group

IMPORTANT NOTES:

(These notes are an integral part of this plan)

This plan has been prepared for Lennium Group for the purposes of A Disclosure Plan Under the Land Sales Act 1984 (as amended).

It is not to be used by any other person or corporation or for any other purposes and is subject to the following limitations:

Please refer to the approved Development Application for conditions relating to the LOT and to approved Operational Works drawings for services location and possible easements.

THESE DESIGNS AND DRAWINGS ARE COPYRIGHT AND ARE NOT TO BE USED OR REPRODUCED WITHOUT THE WRITTEN PERMISSION OF VERIS

Data Sources

Cadastral Boundaries: 401871-LC01-L.dwg

Engineering Design: X_22-000082_5_BASE-20250130.dwg

Final Surface Contours: 22-000082-5-12-tin-design-20250130.dwg

Depth of Fill: 22-000082-5-12-depth-contour-0.1m-20250130.dwg

Retaining Walls: 22-000082_5-COMBINED-20250123.pdf

A	Original	6/02/2025	TEM
Issue	Revisions	Date	Drawn

Locality: Lilywood
Local Authority: Moreton Bay C. C.
Horizontal Meridian: MGA Zone56
Vertical Level Datum: AHD
Scale: 1:250 @ A4
Designed: Egis
Drawn: TEM 6/02/2025
Checked: DC
Plot Date: 11 Feb, 2025
Computer File Ref: 401871-SIS-DP(A).dwg

DISCLOSURE PLAN
of Proposed Lot 258
being part of
Lot 9000
on SP347803



veris

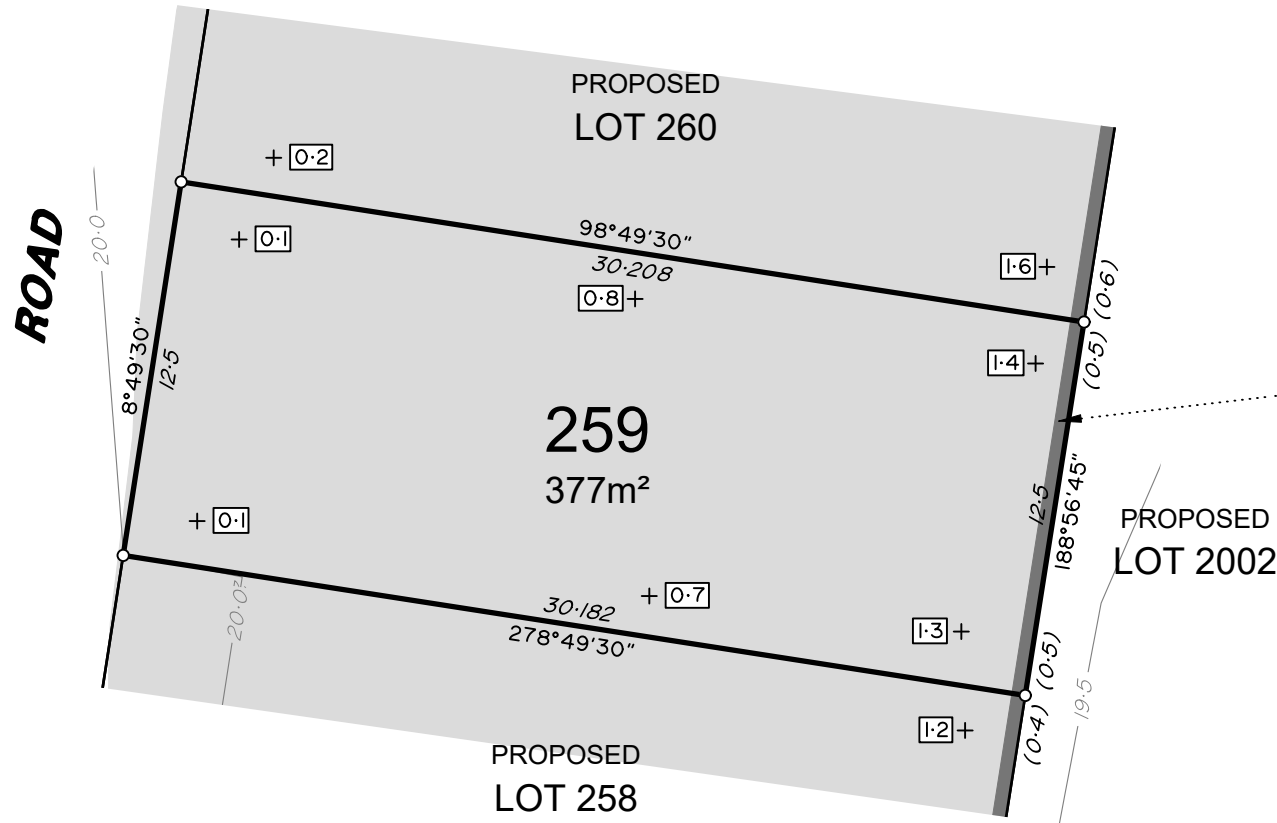
BRISBANE (07) 3666 4700 WHITSUNDAYS (07) 4945 6600

MACKAY (07) 4957 9700 CAIRNS (07) 4252 9400

veris.com.au
ACN 615 735 727
Veris Australia Pty Ltd

Drawing No 401871-DP258 Issue A





Retaining Wall Lot 259
Min Height:- 0.5m
Max Height:- 0.5m
Average Height:- 0.5m

ADDITIONAL NOTES:

The Lot dimensions and area shown hereon are subject to final field survey and also to the requirements of Council and any other authority which may have requirements under any relevant legislation

Final surface contours shown hereon have been supplied by Egis.

Compaction of any fill material placed on this site shall be completed to level one inspection and testing services in accordance with AS3798-2007.

Depth of fill values are calculated to the lower of the pre-development surface and the ground surface from Survey.

Copyright © Veris Australia Pty Ltd February 2025.

LEGEND

Final surface contours based on A.H.D. datum at an interval of 0.5m, shown as: — 15.5 —

Where applicable, areas to be filled are shown as:

Depth of fill, in metres, shown as: - +0.5

Retaining wall and retaining wall height, shown on the lower side of the wall, have been calculated from digital data supplied by Egis and shown as:

(1.2)

Lilywood Landings Stage 5 For Lennium Group

IMPORTANT NOTES:
(These notes are an integral part of this plan)
This plan has been prepared for Lennium Group for the purposes of A Disclosure Plan Under the Land Sales Act 1984 (as amended).
It is not to be used by any other person or corporation or for any other purposes and is subject to the following limitations:

Please refer to the approved Development Application for conditions relating to the LOT and to approved Operational Works drawings for services location and possible easements.

THESE DESIGNS AND DRAWINGS ARE COPYRIGHT AND ARE NOT TO BE USED OR REPRODUCED WITHOUT THE WRITTEN PERMISSION OF VERIS

Data Sources
Cadastral Boundaries: 401871-LC01-L.dwg
Engineering Design: X_22-000082_5_BASE-20250130.dwg
Final Surface Contours: 22-000082-5-12-tin-design-20250130.dwg
Depth of Fill: 22-000082-5-12-depth-contour-0.1m-20250130.dwg
Retaining Walls: 22-000082_5-COMBINED-20250123.pdf

Issue	Revisions	Date	Drawn
A	Original	6/02/2025	TEM

Locality: Lilywood
Local Authority: Moreton Bay C. C.
Horizontal Meridian: MGA Zone56
Vertical Level Datum: AHD
Scale: 1:250 @ A4
Designed: Egis
Drawn: TEM 6/02/2025
Checked: DC
Plot Date: 11 Feb, 2025
Computer File Ref: 401871-S15-DP(A).dwg

DISCLOSURE PLAN
of Proposed Lot 259
being part of
Lot 9000
on SP347803



veris

BRISBANE (07) 3666 4700 WHITSUNDAYS (07) 4945 6600

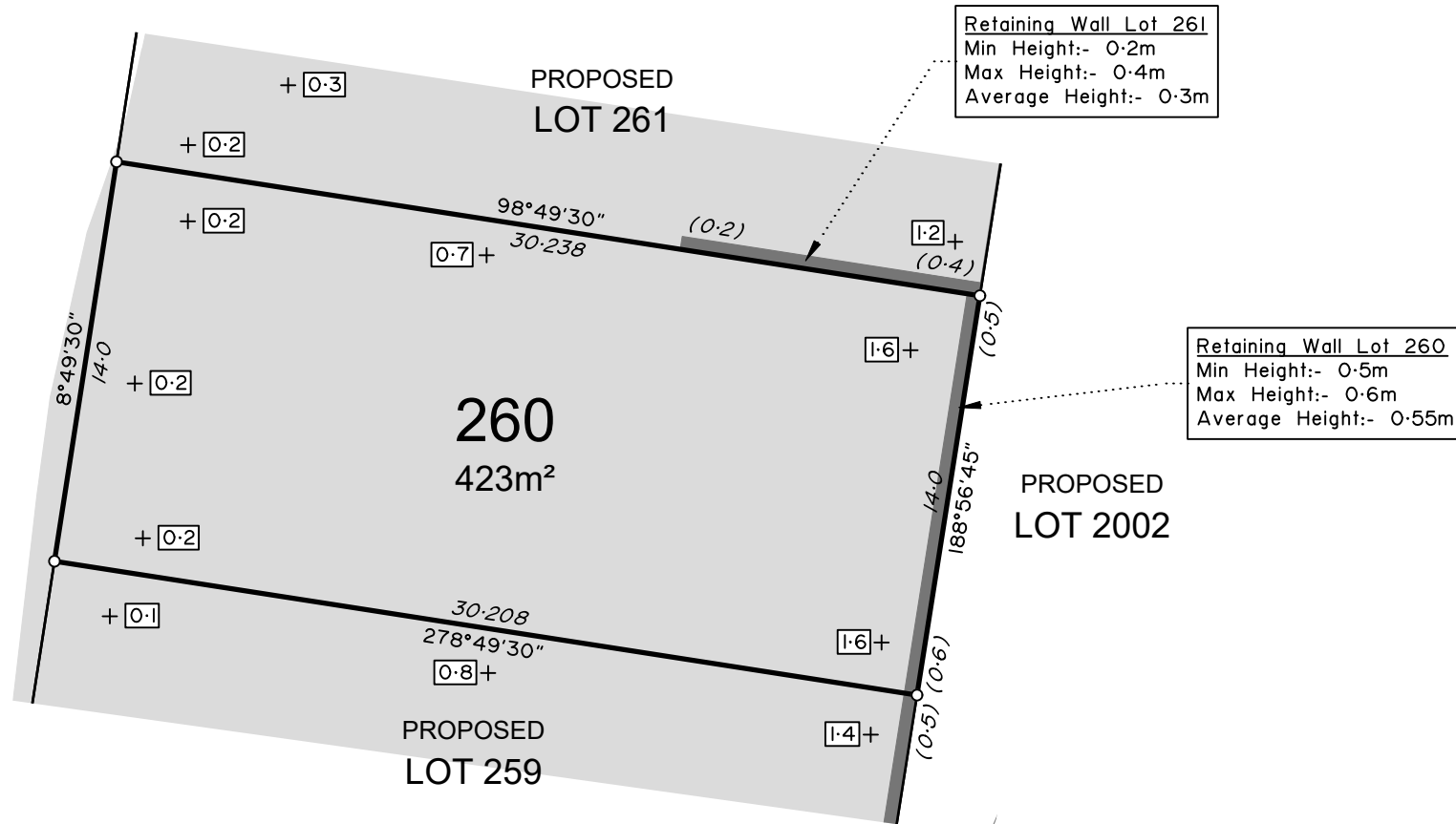
MACKAY (07) 4957 9700 CAIRNS (07) 4252 9400

veris.com.au
ACN 615 735 727
Veris Australia Pty Ltd

Drawing No 401871-DP259 Issue A



ROAD



ADDITIONAL NOTES:

The Lot dimensions and area shown hereon are subject to final field survey and also to the requirements of Council and any other authority which may have requirements under any relevant legislation

Final surface contours shown hereon have been supplied by Egis.

Compaction of any fill material placed on this site shall be completed to level one inspection and testing services in accordance with AS3798-2007.

Depth of fill values are calculated to the lower of the pre-development surface and the ground surface from Survey.

Copyright © Veris Australia Pty Ltd February 2025.

LEGEND

Final surface contours based on A.H.D. datum at an interval of 0.5m, shown as:

Where applicable, areas to be filled are shown as:

Depth of fill, in metres, shown as:

Retaining wall and retaining wall height, shown on the lower side of the wall, have been calculated from digital data supplied by Egis and shown as:

Lilywood Landings Stage 5 For Lennium Group

IMPORTANT NOTES:

(These notes are an integral part of this plan)

This plan has been prepared for Lennium Group for the purposes of A Disclosure Plan Under the Land Sales Act 1984 (as amended).

It is not to be used by any other person or corporation or for any other purposes and is subject to the following limitations:

Please refer to the approved Development Application for conditions relating to the LOT and to approved Operational Works drawings for services location and possible easements.

THESE DESIGNS AND DRAWINGS ARE COPYRIGHT AND ARE NOT TO BE USED OR REPRODUCED WITHOUT THE WRITTEN PERMISSION OF VERIS

Data Sources

Cadastral Boundaries: 401871-LC01-L.dwg

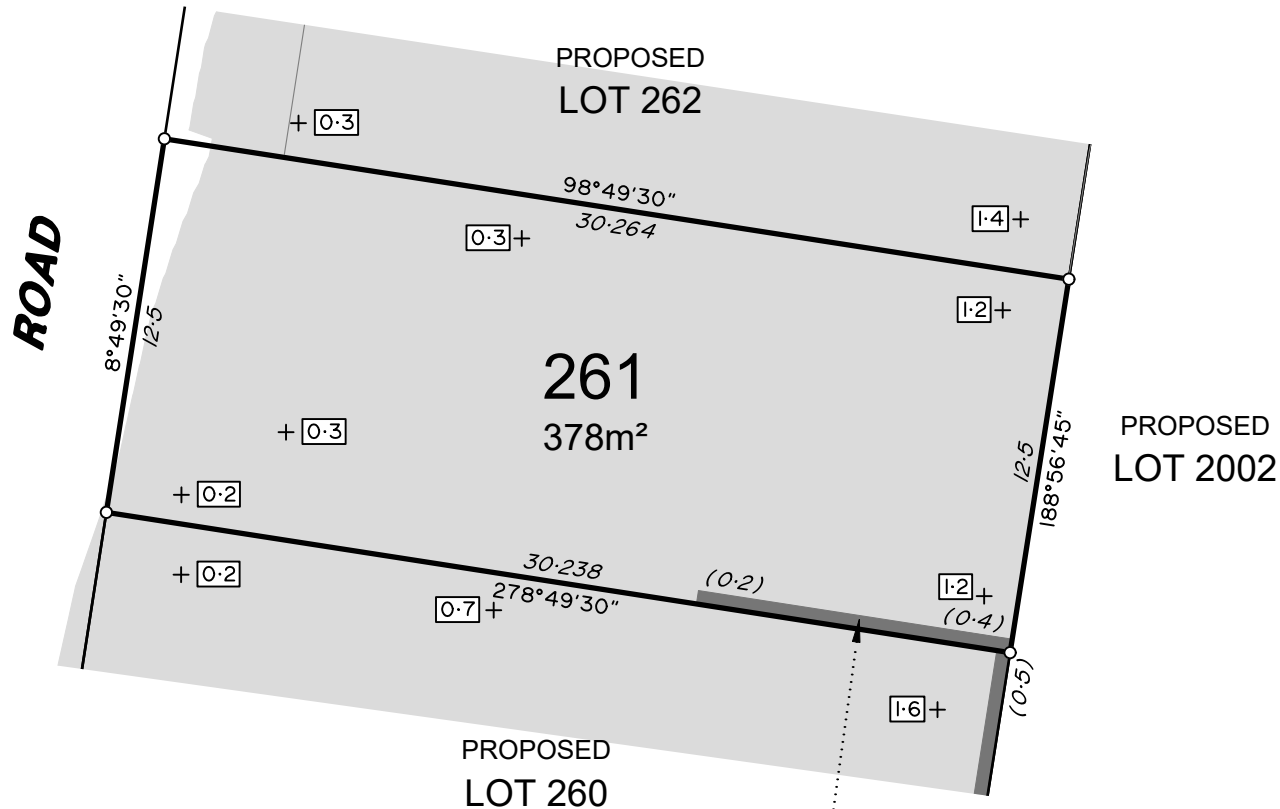
Engineering Design: X_22-000082_5_BASE-20250130.dwg

Final Surface Contours: 22-000082-5-12-tin-design-20250130.dwg

Depth of Fill: 22-000082-5-12-depth-contour-0.1m-20250130.dwg

Retaining Walls: 22-000082_5-COMBINED-20250123.pdf

22-000082_5-COMBINED-20250123.pdf



ADDITIONAL NOTES:

The Lot dimensions and area shown hereon are subject to final field survey and also to the requirements of Council and any other authority which may have requirements under any relevant legislation

Final surface contours shown hereon have been supplied by Egis.

Compaction of any fill material placed on this site shall be completed to level one inspection and testing services in accordance with AS3798-2007.

Depth of fill values are calculated to the lower of the pre-development surface and the ground surface from Survey.

Copyright © Veris Australia Pty Ltd February 2025.

Retaining Wall Lot 261
Min Height:- 0.2m
Max Height:- 0.4m
Average Height:- 0.3m

LEGEND

Final surface contours based on A.H.D. datum at an interval of 0.5m, shown as: — 1/5.5 —

Where applicable, areas to be filled are shown as:

Depth of fill, in metres, shown as:- +0.5

Retaining wall and retaining wall height, shown on the lower side of the wall, have been calculated from digital data supplied by Egis and shown as:

(1.2)

Lilywood Landings Stage 5 For Lennium Group

IMPORTANT NOTES:

(These notes are an integral part of this plan)

This plan has been prepared for Lennium Group for the purposes of A Disclosure Plan Under the Land Sales Act 1984 (as amended).

It is not to be used by any other person or corporation or for any other purposes and is subject to the following limitations:

Please refer to the approved Development Application for conditions relating to the LOT and to approved Operational Works drawings for services location and possible easements.

THESE DESIGNS AND DRAWINGS ARE COPYRIGHT AND ARE NOT TO BE USED OR REPRODUCED WITHOUT THE WRITTEN PERMISSION OF VERIS

Data Sources

Cadastral Boundaries: 401871-LC01-L.dwg

Engineering Design: X_22-000082_5_BASE-20250130.dwg

Final Surface Contours: 22-000082-5-12-tin-design-20250130.dwg

Depth of Fill: 22-000082-5-12-depth-contour-0.1m-20250130.dwg

Retaining Walls: 22-000082_5-COMBINED-20250123.pdf

Computer File Ref: 401871-S15-DP(A).dwg

Issue: A Original 6/02/2025 TEM

Revisions: Date Drawn

Locality: Lilywood

Local Authority: Moreton Bay C. C.

Horizontal Meridian: MGA Zone56

Vertical Level Datum: AHD

Scale: 1:250 @ A4

Designed: Egis

Drawn: TEM 6/02/2025

Checked: DC

Plot Date: 11 Feb, 2025

Computer File Ref: 401871-S15-DP(A).dwg

DISCLOSURE PLAN
of Proposed Lot 261
being part of
Lot 9000
on SP347803



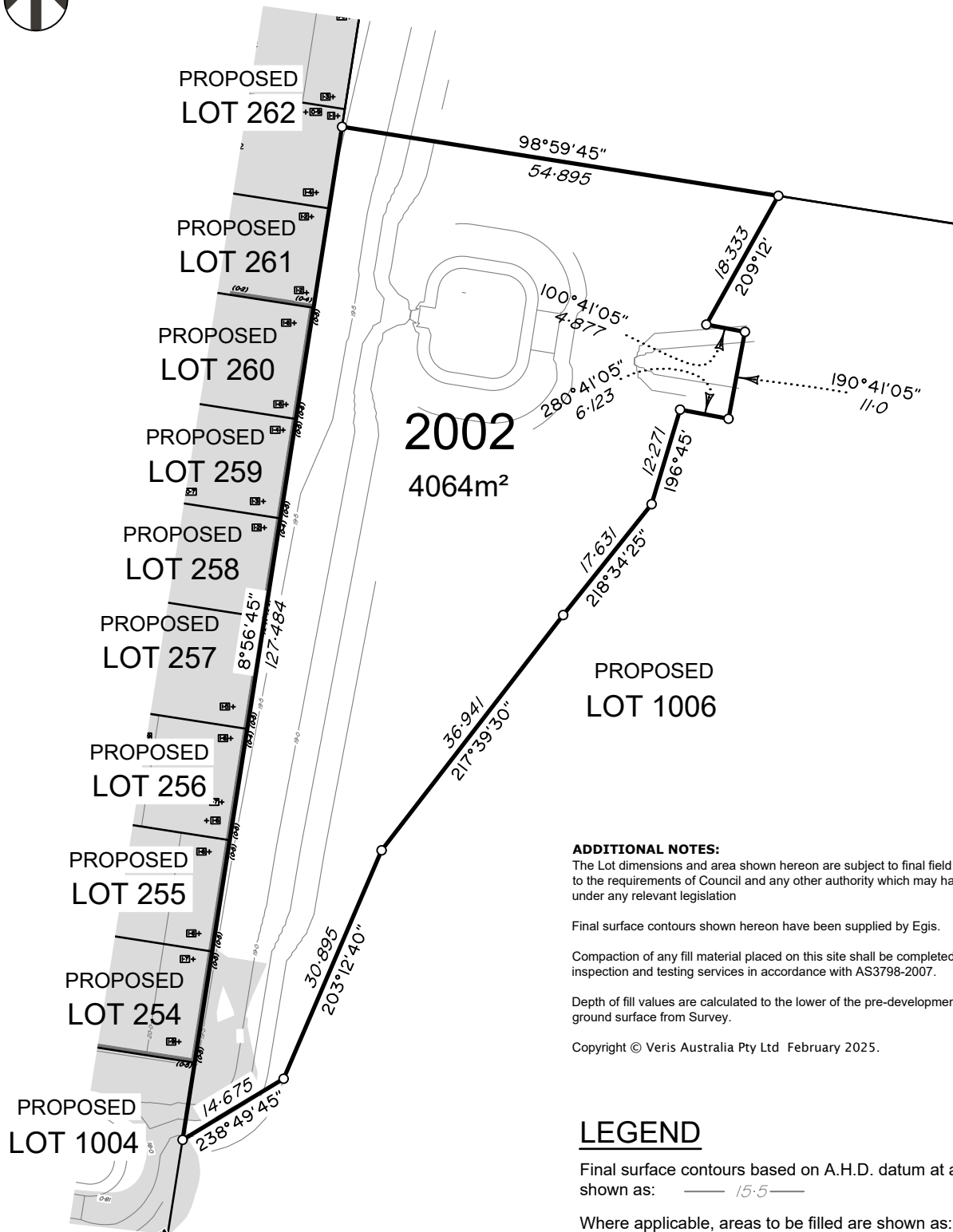
veris

BRISBANE (07) 3666 4700 WHITSUNDAYS (07) 4945 6600

MACKAY (07) 4957 9700 CAIRNS (07) 4252 9400

veris.com.au
ACN 615 735 727
Veris Australia Pty Ltd

Drawing No 401871-DP261 Issue A



ADDITIONAL NOTES:

The Lot dimensions and area shown hereon are subject to final field survey and also to the requirements of Council and any other authority which may have requirements under any relevant legislation


Final surface contours shown hereon have been supplied by Egis.

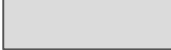
Compaction of any fill material placed on this site shall be completed to level one inspection and testing services in accordance with AS3798-2007.

Depth of fill values are calculated to the lower of the pre-development surface and the ground surface from Survey.


Copyright © Veris Australia Pty Ltd February 2025.

LEGEND

Final surface contours based on A.H.D. datum at an interval of 0.5m, shown as: 

Where applicable, areas to be filled are shown as: 

Depth of fill, in metres, shown as:- 

Retaining wall and retaining wall height, shown on the lower side of the wall, have been calculated from digital data supplied by Egis and shown as: 

(1.2)

IMPORTANT NOTES:

(These notes are an integral part of this plan)
This plan has been prepared for Lennium Group for the purposes of a Disclosure Plan Under the Land Sales Act 1984 (as amended).
It is not to be used by any other person or corporation or for any other purposes and is subject to the following limitations:

Please refer to the approved Development Application for conditions relating to the LOT and to approved Operational Works drawings for services location and possible easements.

Data Sources

Cadastral Boundaries: 401871-LC01-J.dwg
Engineering Design: 22-000082_2-FULLSET-20240112.pdf
Final Surface Contours: 22-000082-dconts-2520240308.dwg
Depth of Fill: 22-000082-depth-contours-0.1m-20240308.dwg
Retaining Walls: 22-000082_2-FULLSET-20240112.pdf

Locality: Lilywood
Local Authority: Moreton Bay C. C.
Horizontal Meridian: MGA, Zone56
Vertical Level Datum: AHD
Scale: 1:750
Designed: Egis
Drawn: JMc 12/03/2024
Checked: GJF 13/03/2024
Plot Date: 11 Feb, 2025
Computer File Ref: 401871-SIS-DP(A).dwg

Lilywood Landings
Stage 2
For
Lennium Group

DISCLOSURE PLAN
of Proposed LOT 2002
being part of
Lot 12
on RP866105

veris

BRISBANE (07) 3666 4700 WHITSUNDAYS (07) 4945 6600

MACKAY (07) 4951 9700 CAIRNS (07) 4252 9400

veris.com.au

ACN 615 735 727
Veris Australia Pty Ltd

Drawing No Issue
401871-DP 2002 A

THESE DESIGNS AND DRAWINGS ARE COPYRIGHT
AND ARE NOT TO BE USED OR REPRODUCED
WITHOUT THE WRITTEN PERMISSION OF VERIS



A	Original	9/07/2024	TEM
Issue	Revisions	Date	Drawn