



Retaining Wall Lot 195
Min Height:- 0.3m
Max Height:- 0.5m
Average Height:- 0.4m

ADDITIONAL NOTES:

The LOT dimensions and area shown hereon are subject to final field survey and also to the requirements of Council and any other authority which may have requirements under any relevant legislation

Final surface contours shown hereon have been supplied by Egis.

Compaction of any fill material placed on this site shall be completed to level one inspection and testing services in accordance with AS3798-2007.

Depth of fill values are calculated to the lower of the pre-development surface and the ground surface from Survey.

Copyright © Veris Australia Pty Ltd August 2025

Lilywood Landings Stage 8 For Foreverlen Pty Ltd

IMPORTANT NOTES:

(These notes are an integral part of this plan)
This plan has been prepared for Foreverlen Pty Ltd for the purposes of A Disclosure Plan Under the Land Sales Act 1984 (as amended).
It is not to be used by any other person or corporation or for any other purposes and is subject to the following limitations:

Please refer to the approved Development Application for conditions relating to the LOT and to approved Operational Works drawings for services location and possible easements.

THESE DESIGNS AND DRAWINGS ARE COPYRIGHT AND ARE NOT TO BE USED OR REPRODUCED WITHOUT THE WRITTEN PERMISSION OF VERIS

Data Sources

Cadastral Boundaries: 401871-LC01-P.dwg
Engineering Design: X_22-000082_8_BASE-20250812.dwg
Final Surface Contours: 22-000082-5-12-Design-Contours-250mm-20250808.dwg
Depth of Fill: 22-000082-5-12-depth-contour-0.1m-20250808.dwg
Retaining Walls: X_22-000082_8_BASE-20250812.dwg

Issue	Revisions	Date	Drawn
B	Updated Engineering	12/08/2025	TEM
A	Original	6/02/2025	TEM

Locality: Lilywood
Local Authority: Moreton Bay C. C.
Horizontal Meridian: MGA, Zone56
Vertical Level Datum: AHD
Scale: 1:250 @ A4
Designed: Egis
Drawn: TEM 6/02/2025
Checked: DC
Plot Date: 08 Sep, 2025
Computer File Ref: 401871-S18-DP(B).dwg

DISCLOSURE PLAN
of Proposed LOT 195
being part of
Lot 12
on RP866105



veris

BRISBANE WHITSUNDAYS
(07) 3686 4700 (07) 4945 6600

MACKAY CAIRNS
(07) 4957 9700 (07) 4252 9400

veris.com.au
ACN 615 735 727
Veris Australia Pty Ltd

Drawing No Issue
401871-DP195 B

PROPOSED
LOT 1008

PROPOSED
LOT 250

PROPOSED
LOT 251

PROPOSED
LOT 252

PROPOSED
LOT 194

PROPOSED
LOT 193

PROPOSED
LOT 196

195
420m²

ROAD

LEGEND

Final surface contours based on A.H.D. datum at an interval of 0.5m,
shown as: — 15.5 —

Where applicable, areas to be filled are shown as:

Depth of fill, in metres, shown as:- + [0.5]

Retaining wall and retaining wall height, shown on the lower side
of the wall, have been calculated from digital data supplied by
Egis and shown as:

(1.2)

0 12.5m 25m 37.5m
50 mm 100 mm 150 mm SCALE BAR



ADDITIONAL NOTES:

The LOT dimensions and area shown hereon are subject to final field survey and also to the requirements of Council and any other authority which may have requirements under any relevant legislation

Final surface contours shown hereon have been supplied by Egis.

Compaction of any fill material placed on this site shall be completed to level one inspection and testing services in accordance with AS3798-2007.

Depth of fill values are calculated to the lower of the pre-development surface and the ground surface from Survey.

Copyright © Veris Australia Pty Ltd August 2025

Lilywood Landings Stage 8 For Foreverlen Pty Ltd

IMPORTANT NOTES:

(These notes are an integral part of this plan)

This plan has been prepared for Foreverlen Pty Ltd for the purposes of A Disclosure Plan Under the Land Sales Act 1984 (as amended).

It is not to be used by any other person or corporation or for any other purposes and is subject to the following limitations:

Please refer to the approved Development Application for conditions relating to the LOT and to approved Operational Works drawings for services location and possible easements.

THESE DESIGNS AND DRAWINGS ARE COPYRIGHT AND ARE NOT TO BE USED OR REPRODUCED WITHOUT THE WRITTEN PERMISSION OF VERIS

Data Sources

Cadastral Boundaries: 401871-LC01-P.dwg

Engineering Design: X_22-000082_8_BASE-20250812.dwg

Final Surface Contours: 22-000082-5-12-Design-Contours-250mm-20250808.dwg

Depth of Fill: 22-000082-5-12-depth-contour-0.1m-20250808.dwg

Retaining Walls: X_22-000082_8_BASE-20250812.dwg

X_22-000082_8_BASE-20250812.dwg

B Updated Engineering 12/08/2025 TEM

A Original 6/02/2025 TEM

Issue Revisions Date Drawn

Locality: Lilywood

Local Authority: Moreton Bay C. C.

Horizontal Meridian: MGA, Zone56

Vertical Level Datum: AHD

Scale: 1:250 @ A4

Designed: Egis


Drawn: TEM 6/02/2025


Checked: DC

Plot Date: 08 Sep, 2025


Computer File Ref: 401871-S18-DP(B).dwg

LEGEND

Final surface contours based on A.H.D. datum at an interval of 0.5m, shown as:  15.5

Where applicable, areas to be filled are shown as: 

Depth of fill, in metres, shown as:- +[0.5]

Retaining wall and retaining wall height, shown on the lower side of the wall, have been calculated from digital data supplied by Egis and shown as: 

(1.2)

0 12.5m 50 mm 25m 100 mm 37.5m 150 mm SCALE BAR

Retaining Wall Lot 193
Min Height:- 0.3m
Max Height:- 0.3m
Average Height:- 0.3m

veris

BRISBANE WHITSUNDAYS
(07) 3666 4700 (07) 4945 6600

MACKAY CAIRNS
(07) 4957 9700 (07) 4252 9400

veris.com.au
ACN 615 735 727
Veris Australia Pty Ltd

Drawing No Issue
401871-DP196 B



ASHFORD CRESCENT

ADDITIONAL NOTES:

The LOT dimensions and area shown hereon are subject to final field survey and also to the requirements of Council and any other authority which may have requirements under any relevant legislation

Final surface contours shown hereon have been supplied by Egis.

Compaction of any fill material placed on this site shall be completed to level one inspection and testing services in accordance with AS3798-2007.

Depth of fill values are calculated to the lower of the pre-development surface and the ground surface from Survey.

Copyright © Veris Australia Pty Ltd August 2025

Lilywood Landings Stage 8 For Foreverlen Pty Ltd

IMPORTANT NOTES:

(These notes are an integral part of this plan)
This plan has been prepared for Foreverlen Pty Ltd for the purposes of A Disclosure Plan Under the Land Sales Act 1984 (as amended).
It is not to be used by any other person or corporation or for any other purposes and is subject to the following limitations:

Please refer to the approved Development Application for conditions relating to the LOT and to approved Operational Works drawings for services location and possible easements.

THESE DESIGNS AND DRAWINGS ARE COPYRIGHT AND ARE NOT TO BE USED OR REPRODUCED WITHOUT THE WRITTEN PERMISSION OF VERIS

Data Sources

Cadastral Boundaries: 401871-LC01-P.dwg
Engineering Design: X_22-000082_8_BASE-20250812.dwg
Final Surface Contours: 22-000082-5-12-Design-Contours-250mm-20250808.dwg
Depth of Fill: 22-000082-5-12-depth-contour-0.1m-20250808.dwg
Retaining Walls: X_22-000082_8_BASE-20250812.dwg

B	Updated Engineering	12/08/2025	TEM
A	Original	6/02/2025	TEM
Issue	Revisions	Date	Drawn

Locality: Lilywood
Local Authority: Moreton Bay C. C.
Horizontal Meridian: MGA, Zone56
Vertical Level Datum: AHD
Scale: 1:250 @ A4
Designed: Egis
Drawn: TEM 6/02/2025
Checked: DC
Plot Date: 08 Sep, 2025
Computer File Ref: 401871-SB-DP(B).dwg

DISCLOSURE PLAN
of Proposed LOT 197
being part of
Lot 12
on RP866105



veris

BRISBANE WHITSUNDAYS
(07) 3686 4700 (07) 4945 6600

MACKAY CAIRNS
(07) 4957 9700 (07) 4252 9400

veris.com.au
ACN 615 735 727
Veris Australia Pty Ltd

Drawing No Issue
401871-DP197 B

LEGEND

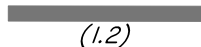
Final surface contours based on A.H.D. datum at an interval of 0.5m, shown as: — 15.5 —

Where applicable, areas to be filled are shown as:



Depth of fill, in metres, shown as:- + [0.5]

Retaining wall and retaining wall height, shown on the lower side of the wall, have been calculated from digital data supplied by Egis and shown as:



0 12.5m 25m 37.5m
50 mm 100 mm 150 mm SCALE BAR

PROPOSED
LOT 196

PROPOSED
LOT 193

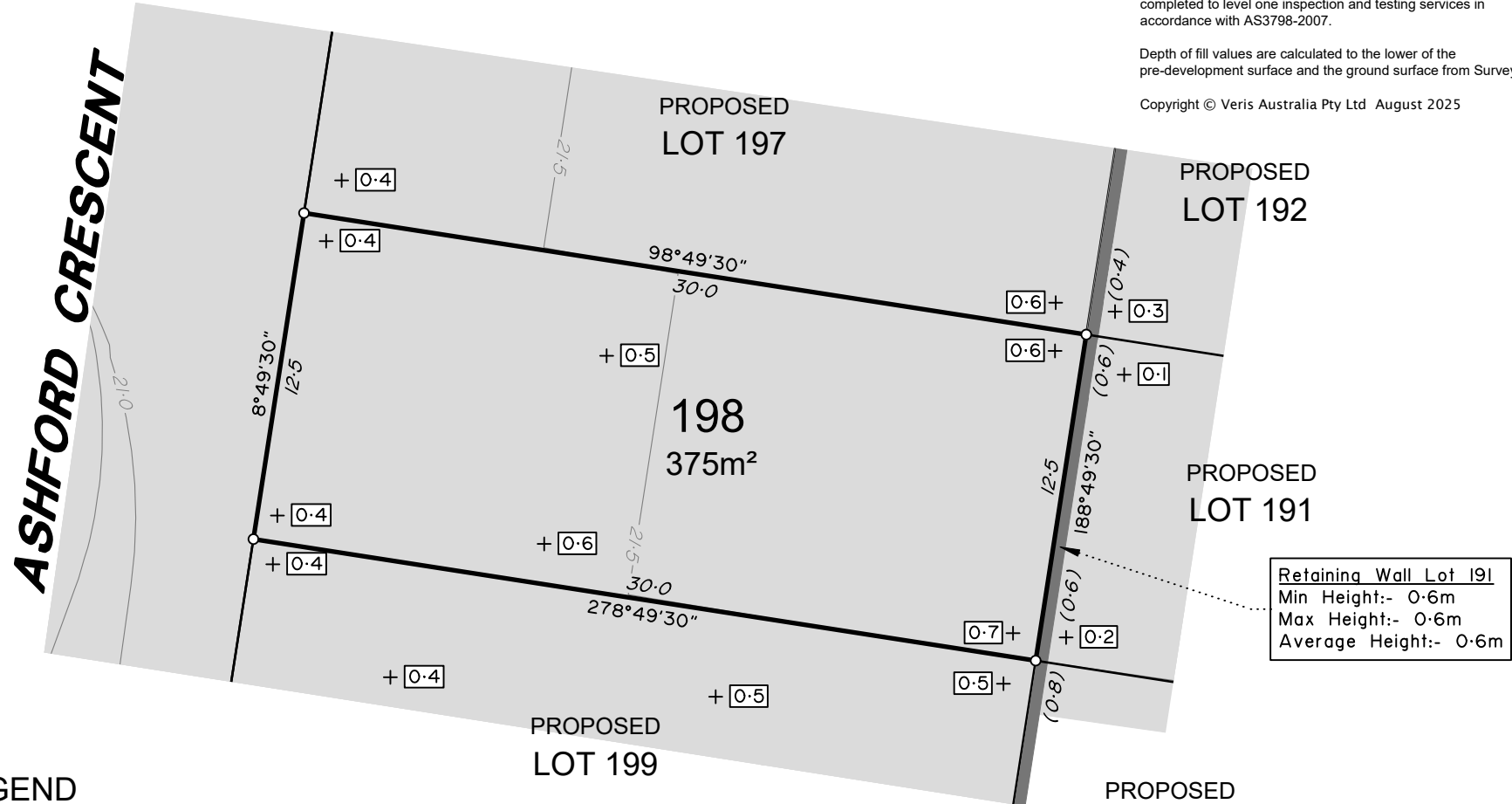
197
315m²

PROPOSED
LOT 192

PROPOSED
LOT 198

PROPOSED
LOT 191

Retaining Wall Lot 192
Min Height:- 0.4m
Max Height:- 0.4m
Average Height:- 0.4m



ADDITIONAL NOTES:
The LOT dimensions and area shown hereon are subject to final field survey and also to the requirements of Council and any other authority which may have requirements under any relevant legislation

Final surface contours shown hereon have been supplied by Egis.

Compaction of any fill material placed on this site shall be completed to level one inspection and testing services in accordance with AS3798-2007.

Depth of fill values are calculated to the lower of the pre-development surface and the ground surface from Survey.

Copyright © Veris Australia Pty Ltd August 2025

Lilywood Landings
Stage 8
For
Foreverlen Pty Ltd

IMPORTANT NOTES:
(These notes are an integral part of this plan)
This plan has been prepared for Foreverlen Pty Ltd for the purposes of A Disclosure Plan Under the Land Sales Act 1984 (as amended).
It is not to be used by any other person or corporation or for any other purposes and is subject to the following limitations:
Please refer to the approved Development Application for conditions relating to the LOT and to approved Operational Works drawings for services location and possible easements.

THESE DESIGNS AND DRAWINGS ARE COPYRIGHT AND ARE NOT TO BE USED OR REPRODUCED WITHOUT THE WRITTEN PERMISSION OF VERIS

Data Sources
Cadastral Boundaries: 401871-LC01-P.dwg
Engineering Design: X_22-000082_8_BASE-20250812.dwg
Final Surface Contours: 22-000082-5-12-Design-Contours-250mm-20250808.dwg
Depth of Fill: 22-000082-5-12-depth-contour-0.1m-20250808.dwg
Retaining Walls: X_22-000082_8_BASE-20250812.dwg

Issue	Revisions	Date	Drawn
B	Updated Engineering	12/08/2025	TEM
A	Original	6/02/2025	TEM

Locality: Lilywood
Local Authority: Moreton Bay C. C.
Horizontal Meridian: MGA, Zone56
Vertical Level Datum: AHD
Scale: 1:250 @ A4
Designed: Egis
Drawn: TEM 6/02/2025
Checked: DC
Plot Date: 08 Sep, 2025
Computer File Ref: 401871-S18-DP(B).dwg

DISCLOSURE PLAN
of Proposed LOT 198
being part of
Lot 12
on RP866105



veris

BRISBANE WHITSUNDAYS
(07) 3686 4700 (07) 4945 6600
MACKAY CAIRNS
(07) 4957 9700 (07) 4252 9400

veris.com.au
ACN 615 735 727
Veris Australia Pty Ltd

Drawing No Issue
401871-DP198 B

LEGEND

Final surface contours based on A.H.D. datum at an interval of 0.5m, shown as: 15.5

Where applicable, areas to be filled are shown as:

Depth of fill, in metres, shown as:- +0.5

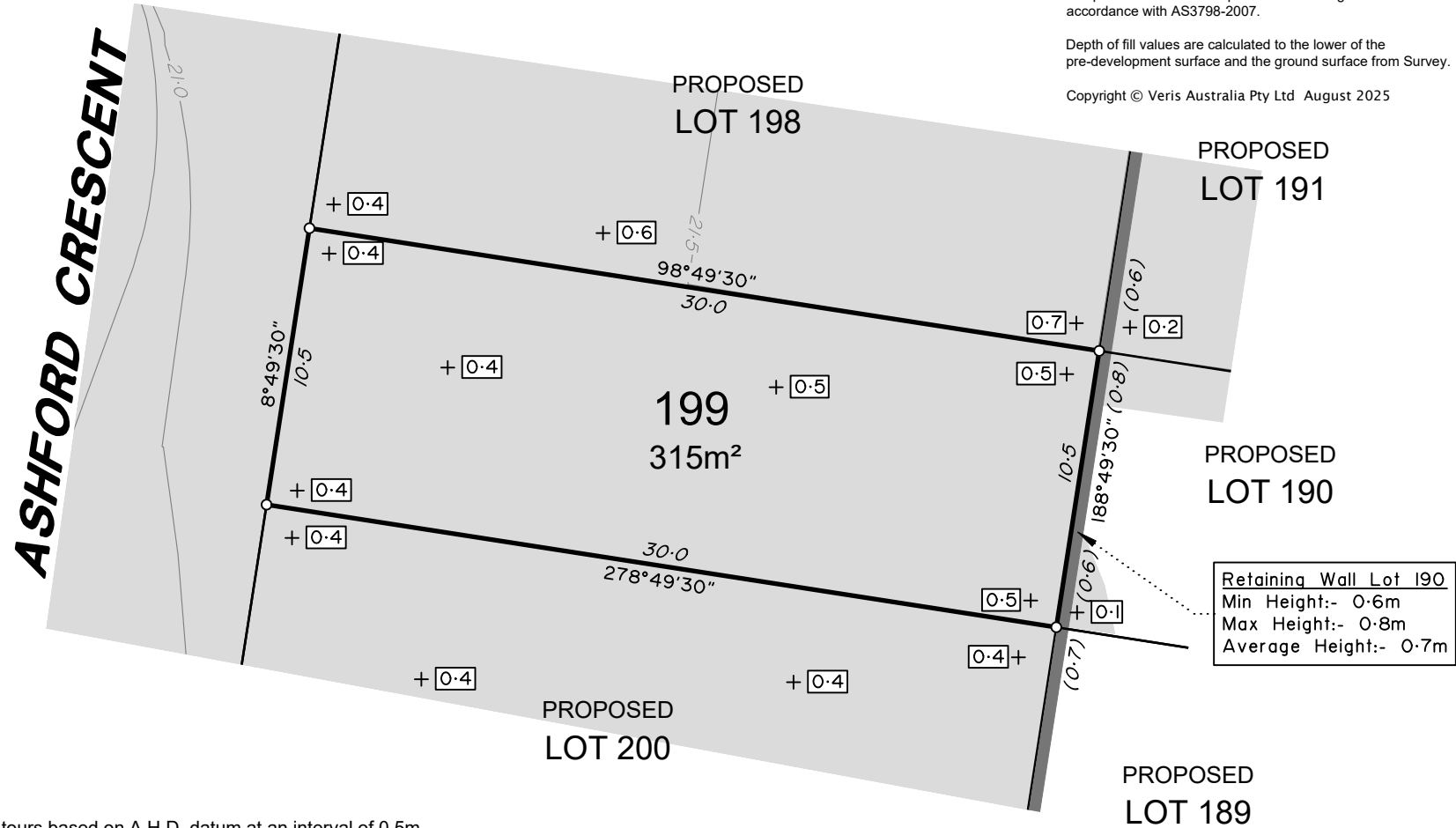
Retaining wall and retaining wall height, shown on the lower side of the wall, have been calculated from digital data supplied by Egis and shown as:

(1.2)

0 12.5m 50 mm 25m 100 mm 37.5m 150 mm SCALE BAR



ASHFORD CRESCENT



ADDITIONAL NOTES:

The LOT dimensions and area shown hereon are subject to final field survey and also to the requirements of Council and any other authority which may have requirements under any relevant legislation

Final surface contours shown hereon have been supplied by Egis.

Compaction of any fill material placed on this site shall be completed to level one inspection and testing services in accordance with AS3798-2007.

Depth of fill values are calculated to the lower of the pre-development surface and the ground surface from Survey.

Copyright © Veris Australia Pty Ltd August 2025

Lilywood Landings Stage 8 For Foreverlen Pty Ltd

IMPORTANT NOTES:

(These notes are an integral part of this plan)
This plan has been prepared for Foreverlen Pty Ltd for the purposes of A Disclosure Plan Under the Land Sales Act 1984 (as amended).
It is not to be used by any other person or corporation or for any other purposes and is subject to the following limitations:

Please refer to the approved Development Application for conditions relating to the LOT and to approved Operational Works drawings for services location and possible easements.

THESE DESIGNS AND DRAWINGS ARE COPYRIGHT AND ARE NOT TO BE USED OR REPRODUCED WITHOUT THE WRITTEN PERMISSION OF VERIS

Data Sources

Cadastral Boundaries: 401871-LC01-P.dwg
Engineering Design: X_22-000082_8_BASE-20250812.dwg
Final Surface Contours: 22-000082-5-12-Design-Contours-250mm-20250808.dwg
Depth of Fill: 22-000082-5-12-Design-Contours-0.1m-20250808.dwg
Retaining Walls: X_22-000082_8_BASE-20250812.dwg

Issue	Revisions	Date	Drawn
B	Updated Engineering	12/08/2025	TEM
A	Original	6/02/2025	TEM

Locality: Lilywood
Local Authority: Moreton Bay C. C.
Horizontal Meridian: MGA, Zone56
Vertical Level Datum: AHD
Scale: 1:250 @ A4
Designed: Egis
Drawn: TEM 6/02/2025
Checked: DC
Plot Date: 08 Sep, 2025
Computer File Ref: 401871-S18-DP(B).dwg

DISCLOSURE PLAN
of Proposed LOT 199
being part of
Lot 12
on RP866105



veris

BRISBANE WHITSUNDAYS
(07) 3666 4700 (07) 4945 6600

MACKAY CAIRNS
(07) 4957 9700 (07) 4252 9400

veris.com.au
ACN 615 735 727
Veris Australia Pty Ltd

Drawing No Issue
401871-DP 199 B

LEGEND

Final surface contours based on A.H.D. datum at an interval of 0.5m, shown as: — 15.5 —

Where applicable, areas to be filled are shown as:

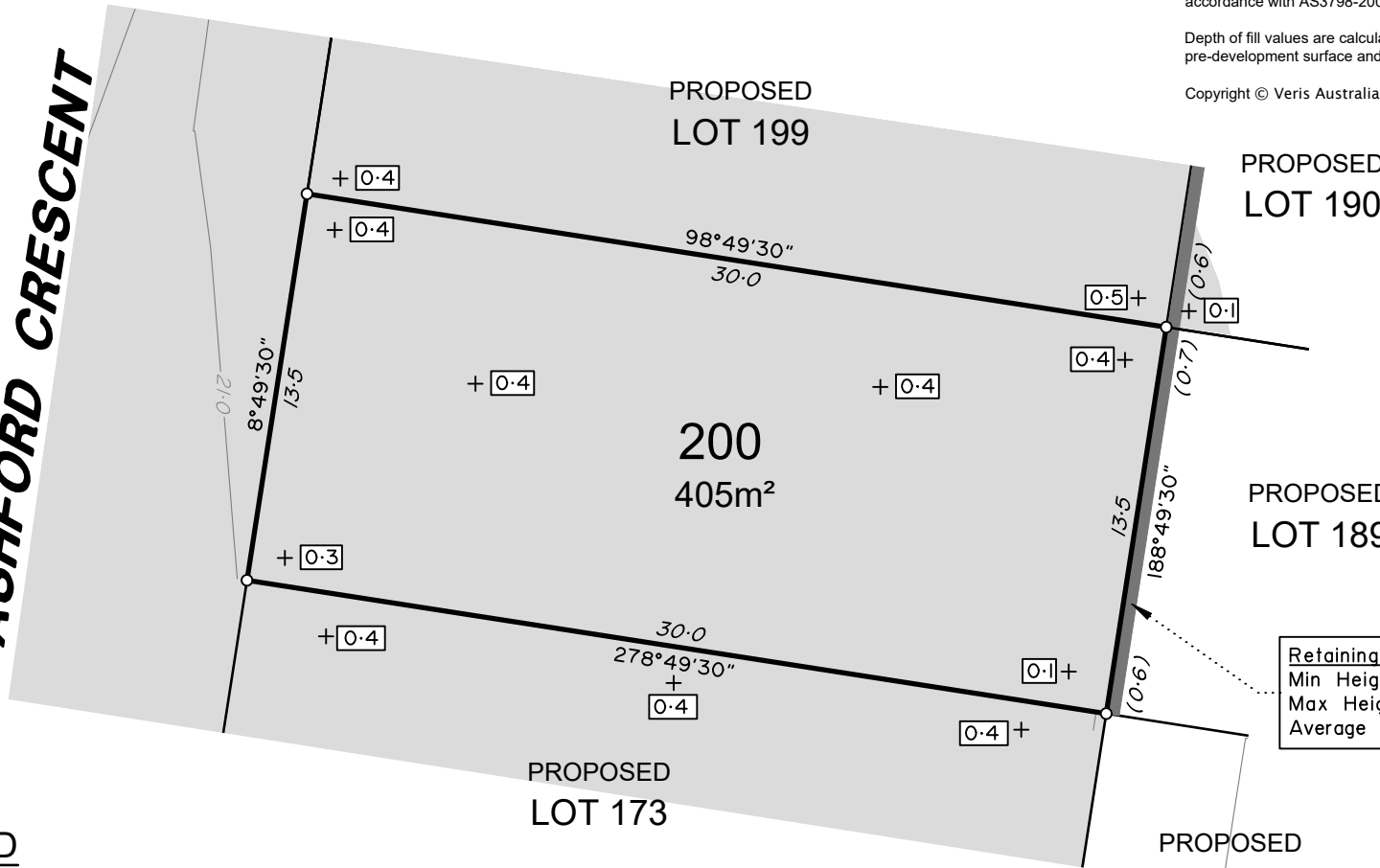
Depth of fill, in metres, shown as:- + [0.5]

Retaining wall and retaining wall height, shown on the lower side of the wall, have been calculated from digital data supplied by Egis and shown as:

0 12.5m 50 mm 25m 100 mm 37.5m 150 mm SCALE BAR



ASHFORD CRESCENT



LEGEND

Final surface contours based on A.H.D. datum at an interval of 0.5m, shown as: — 15.5 —

Where applicable, areas to be filled are shown as: [shaded box]

Depth of fill, in metres, shown as:- + [0.5]

Retaining wall and retaining wall height, shown on the lower side of the wall, have been calculated from digital data supplied by Egis and shown as: [shaded box]

(1.2)

0 12.5m 50 mm 25m 100 mm 37.5m 150 mm SCALE BAR

ADDITIONAL NOTES:

The LOT dimensions and area shown hereon are subject to final field survey and also to the requirements of Council and any other authority which may have requirements under any relevant legislation

Final surface contours shown hereon have been supplied by Egis.

Compaction of any fill material placed on this site shall be completed to level one inspection and testing services in accordance with AS3798-2007.

Depth of fill values are calculated to the lower of the pre-development surface and the ground surface from Survey.

Copyright © Veris Australia Pty Ltd August 2025

Lilywood Landings Stage 8 For Foreverlen Pty Ltd

IMPORTANT NOTES:

(These notes are an integral part of this plan)
This plan has been prepared for Foreverlen Pty Ltd for the purposes of A Disclosure Plan Under the Land Sales Act 1984 (as amended).
It is not to be used by any other person or corporation or for any other purposes and is subject to the following limitations:

Please refer to the approved Development Application for conditions relating to the LOT and to approved Operational Works drawings for services location and possible easements.

THESE DESIGNS AND DRAWINGS ARE COPYRIGHT AND ARE NOT TO BE USED OR REPRODUCED WITHOUT THE WRITTEN PERMISSION OF VERIS

Data Sources

Cadastral Boundaries: 401871-LC01-P.dwg

Engineering Design: X_22-000082_8_BASE-20250812.dwg

Final Surface Contours: 22-000082-5-12-Design-Contours-250mm-20250808.dwg

Depth of Fill: 22-000082-5-12-depth-contour-0.1m-20250808.dwg

Retaining Walls: X_22-000082_8_BASE-20250812.dwg

X_22-000082_8_BASE-20250812.dwg

B Updated Engineering 12/08/2025 TEM

A Original 6/02/2025 TEM

Issue Revisions Date Drawn

Locality: Lilywood

Local Authority: Moreton Bay C. C.

Horizontal Meridian: MGA, Zone56

Vertical Level Datum: AHD

Scale: 1:250 @ A4

Designed: Egis

Drawn: TEM 6/02/2025

Checked: DC

Plot Date: 08 Sep, 2025

Computer File Ref: 401871-S18-DP(B).dwg

DISCLOSURE PLAN

of Proposed LOT 200

being part of

Lot 12

on RP866105



veris

BRISBANE WHITSUNDAYS
(07) 3666 4700 (07) 4945 6600

MACKAY CAIRNS
(07) 4957 9700 (07) 4252 9400

veris.com.au

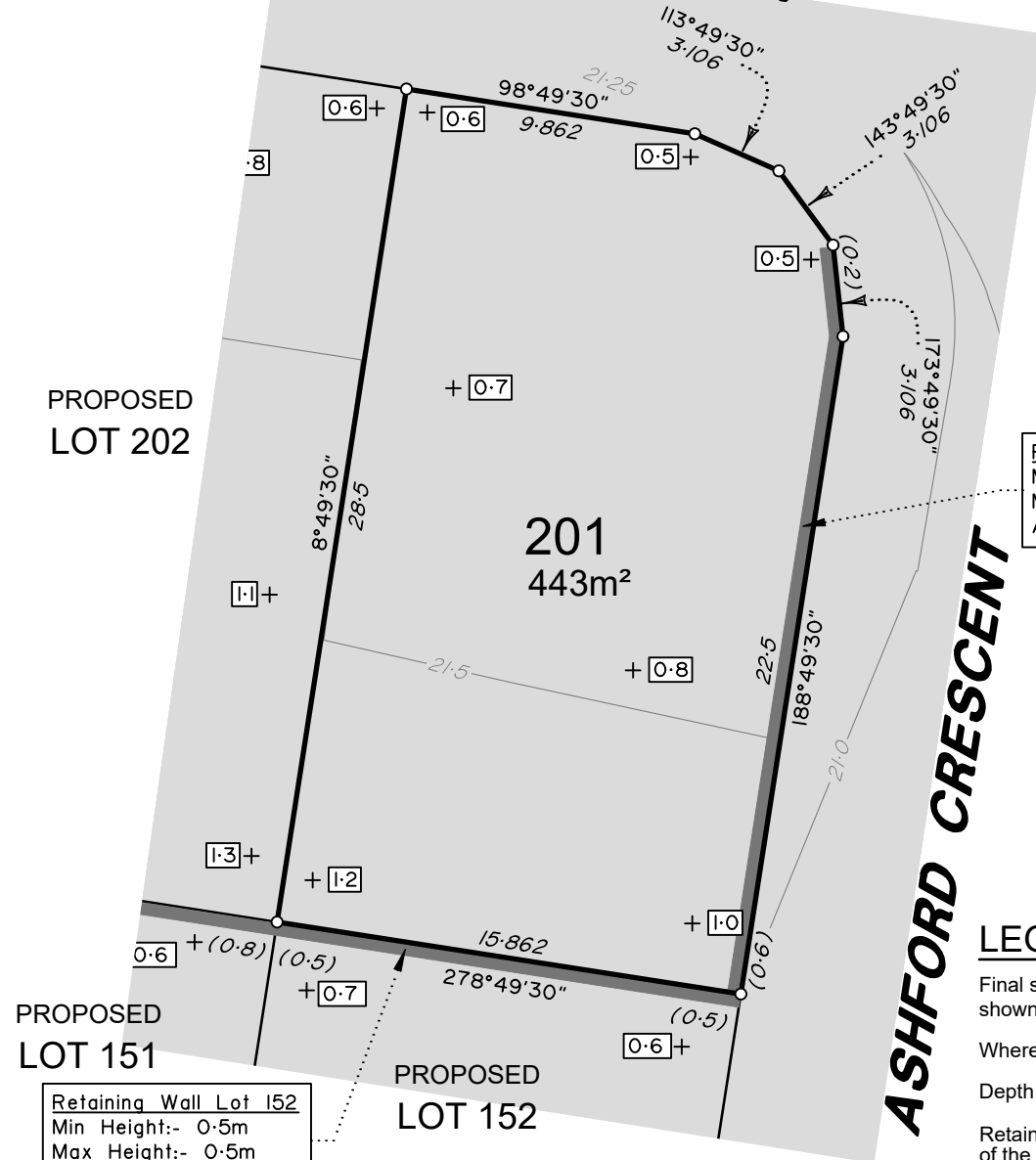
ACN 615 735 727
Veris Australia Pty Ltd

Drawing No Issue

401871-DP200 B



ASHFORD CRESCENT



Retaining Wall Lot 201
Min Height:- 0.2m
Max Height:- 0.6m
Average Height:- 0.4m

Retaining Wall Lot 152
Min Height:- 0.5m
Max Height:- 0.5m
Average Height:- 0.5m

ADDITIONAL NOTES:

The LOT dimensions and area shown hereon are subject to final field survey and also to the requirements of Council and any other authority which may have requirements under any relevant legislation

Final surface contours shown hereon have been supplied by Egis.

Compaction of any fill material placed on this site shall be completed to level one inspection and testing services in accordance with AS3798-2007.

Depth of fill values are calculated to the lower of the pre-development surface and the ground surface from Survey.

Copyright © Veris Australia Pty Ltd August 2025

Lilywood Landings
Stage 8
For
Foreverlen Pty Ltd

IMPORTANT NOTES:

(These notes are an integral part of this plan)

This plan has been prepared for Foreverlen Pty Ltd for the purposes of A Disclosure Plan Under the Land Sales Act 1984 (as amended).

It is not to be used by any other person or corporation or for any other purposes and is subject to the following limitations:

Please refer to the approved Development Application for conditions relating to the LOT and to approved Operational Works drawings for services location and possible easements.

THESE DESIGNS AND DRAWINGS ARE COPYRIGHT AND ARE NOT TO BE USED OR REPRODUCED WITHOUT THE WRITTEN PERMISSION OF VERIS

Data Sources

Cadastral Boundaries: 401871-LC01-P.dwg

Engineering Design: X_22-000082_8_BASE-20250812.dwg

Final Surface Contours: 22-000082-5-12-Design-Contours-250mm-20250808.dwg

Depth of Fill: 22-000082-5-12-depth-contour-0.1m-20250808.dwg

Retaining Walls: X_22-000082_8_BASE-20250812.dwg

Issue	Revisions	Date	Drawn
B	Updated Engineering	12/08/2025	TEM
A	Original	6/02/2025	TEM

Locality: Lilywood
Local Authority: Moreton Bay C. C.
Horizontal Meridian: MGA, Zone56
Vertical Level Datum: AHD
Scale: 1:250 @ A4
Designed: Egis
Drawn: TEM 6/02/2025
Checked: DC
Plot Date: 08 Sep, 2025
Computer File Ref: 401871-S18-DP(B).dwg

DISCLOSURE PLAN
of Proposed LOT 201
being part of
Lot 12
on RP866105



veris

BRISBANE (07) 3666 4700 WHITSUNDAYS (07) 4945 6600

MACKAY (07) 4957 9700 CAIRNS (07) 4252 9400

veris.com.au
ACN 615 735 727
Veris Australia Pty Ltd

Drawing No 401871-DP201 Issue B

LEGEND

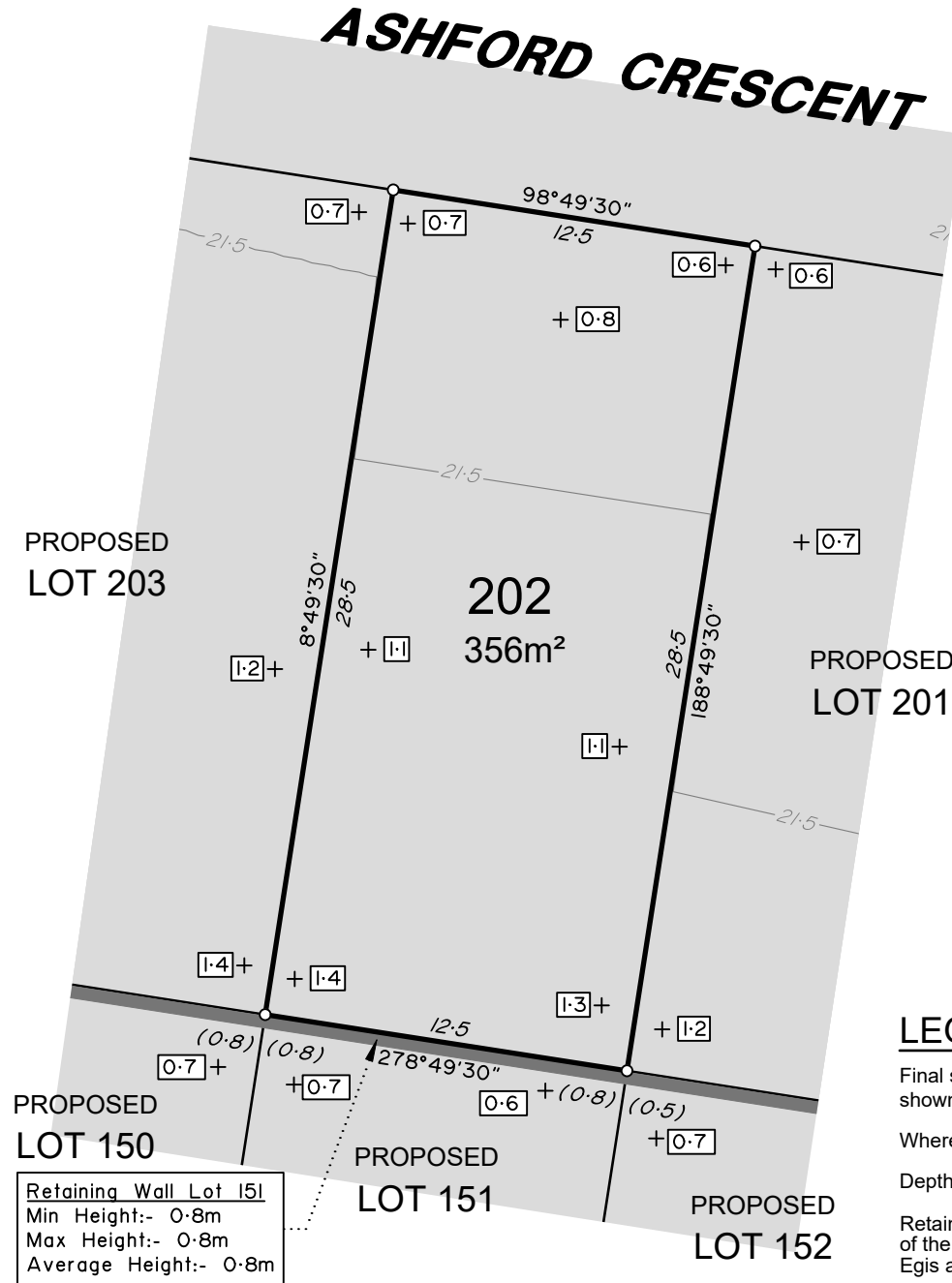
Final surface contours based on A.H.D. datum at an interval of 0.5m, shown as: — 15.5 —

Where applicable, areas to be filled are shown as: [shaded box]

Depth of fill, in metres, shown as:- +0.5

Retaining wall and retaining wall height, shown on the lower side of the wall, have been calculated from digital data supplied by Egis and shown as: [line with height 1.2]

0 12.5m 50 mm 25m 100 mm 37.5m 150 mm SCALE BAR



ADDITIONAL NOTES:

The LOT dimensions and area shown hereon are subject to final field survey and also to the requirements of Council and any other authority which may have requirements under any relevant legislation

Final surface contours shown hereon have been supplied by Egis.

Compaction of any fill material placed on this site shall be completed to level one inspection and testing services in accordance with AS3798-2007.

Depth of fill values are calculated to the lower of the pre-development surface and the ground surface from Survey.

Copyright © Veris Australia Pty Ltd August 2025

Lilywood Landings Stage 8 For Foreverlen Pty Ltd

IMPORTANT NOTES:

(These notes are an integral part of this plan)
This plan has been prepared for Foreverlen Pty Ltd for the purposes of A Disclosure Plan Under the Land Sales Act 1984 (as amended).
It is not to be used by any other person or corporation or for any other purposes and is subject to the following limitations:

Please refer to the approved Development Application for conditions relating to the LOT and to approved Operational Works drawings for services location and possible easements.

THESE DESIGNS AND DRAWINGS ARE COPYRIGHT AND ARE NOT TO BE USED OR REPRODUCED WITHOUT THE WRITTEN PERMISSION OF VERIS

Data Sources

Cadastral Boundaries: 401871-LC01-P.dwg
Engineering Design: X_22-000082_8_BASE-20250812.dwg
Final Surface Contours: 22-000082-5-12-Design-Contours-250mm-20250808.dwg
Depth of Fill: 22-000082-5-12-Design-Contours-0.1m-20250808.dwg
Retaining Walls: X_22-000082_8_BASE-20250812.dwg

Issue	Revisions	Date	Drawn
B	Updated Engineering	12/08/2025	TEM
A	Original	6/02/2025	TEM

Locality: Lilywood
Local Authority: Moreton Bay C. C.
Horizontal Meridian: MGA, Zone56
Vertical Level Datum: AHD
Scale: 1:250 @ A4
Designed: Egis
Drawn: TEM 6/02/2025
Checked: DC
Plot Date: 08 Sep, 2025
Computer File Ref: 401871-S18-DP(B).dwg

DISCLOSURE PLAN of Proposed LOT 202 being part of Lot 12 on RP866105



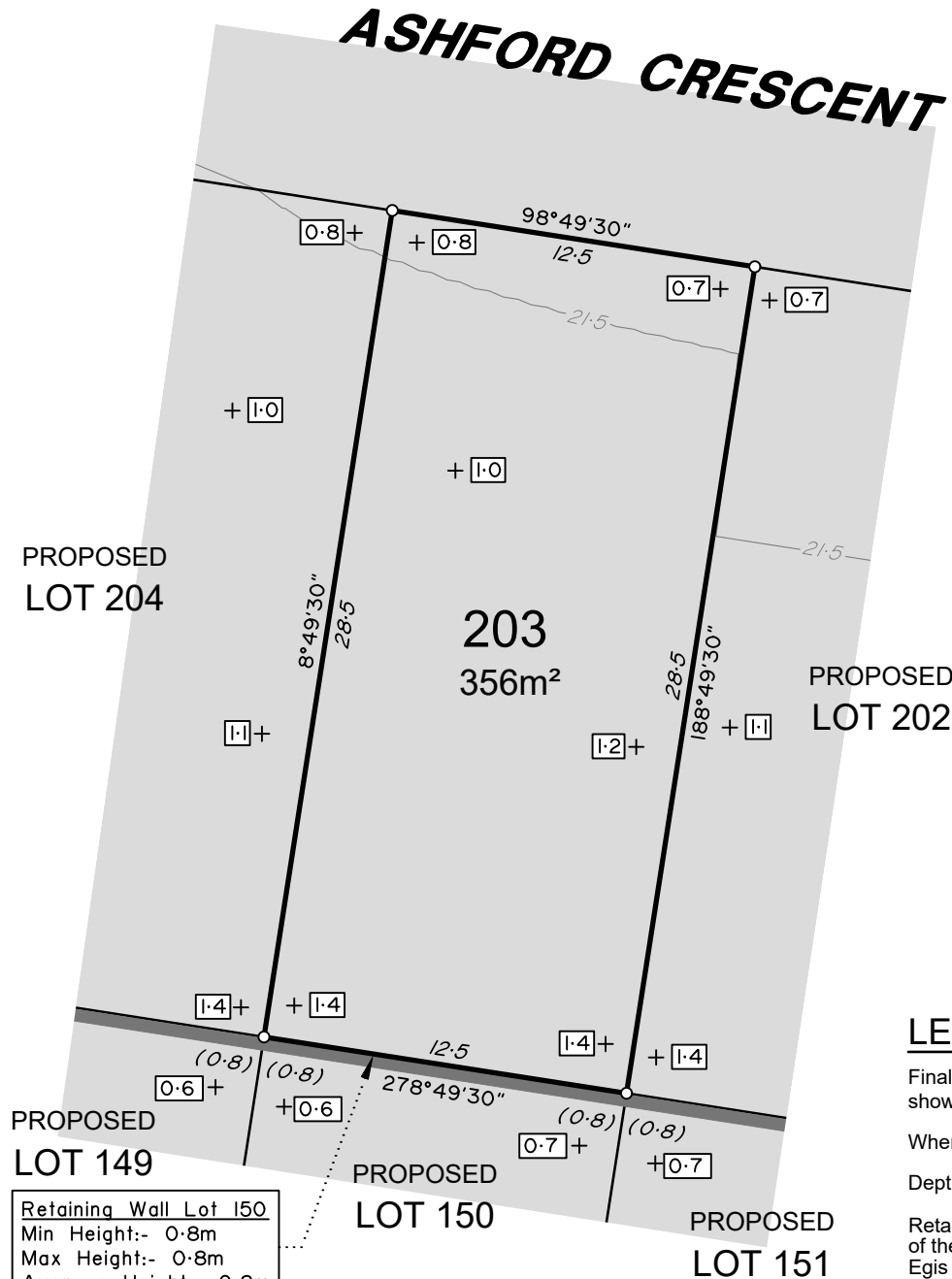
veris

BRISBANE (07) 3666 4700 WHITSUNDAYS (07) 4945 6600

MACKAY (07) 4957 9700 CAIRNS (07) 4252 9400

veris.com.au
ACN 615 735 727
Veris Australia Pty Ltd

Drawing No 401871-DP202 Issue B



ADDITIONAL NOTES:

The LOT dimensions and area shown hereon are subject to final field survey and also to the requirements of Council and any other authority which may have requirements under any relevant legislation

Final surface contours shown hereon have been supplied by Egis.

Compaction of any fill material placed on this site shall be completed to level one inspection and testing services in accordance with AS3798-2007.

Depth of fill values are calculated to the lower of the pre-development surface and the ground surface from Survey.

Copyright © Veris Australia Pty Ltd August 2025

Lilywood Landings Stage 8 For Foreverlen Pty Ltd

IMPORTANT NOTES:

(These notes are an integral part of this plan)
This plan has been prepared for Foreverlen Pty Ltd for the purposes of A Disclosure Plan Under the Land Sales Act 1984 (as amended).
It is not to be used by any other person or corporation or for any other purposes and is subject to the following limitations:

Please refer to the approved Development Application for conditions relating to the LOT and to approved Operational Works drawings for services location and possible easements.

THESE DESIGNS AND DRAWINGS ARE COPYRIGHT AND ARE NOT TO BE USED OR REPRODUCED WITHOUT THE WRITTEN PERMISSION OF VERIS

Data Sources

Cadastral Boundaries: 401871-LC01-P.dwg
Engineering Design: X_22-000082_8_BASE-20250812.dwg
Final Surface Contours: 22-000082-5-12-Design-Contours-250mm-20250808.dwg
Depth of Fill: 22-000082-5-12-depth-contour-0.1m-20250808.dwg
Retaining Walls: X_22-000082_8_BASE-20250812.dwg

Issue	Revisions	Date	Drawn
B	Updated Engineering	12/08/2025	TEM
A	Original	6/02/2025	TEM

Locality: Lilywood
Local Authority: Moreton Bay C. C.
Horizontal Meridian: MGA, Zone56
Vertical Level Datum: AHD
Scale: 1:250 @ A4
Designed: Egis
Drawn: TEM 6/02/2025
Checked: DC
Plot Date: 08 Sep, 2025
Computer File Ref: 401871-S18-DP(B).dwg

DISCLOSURE PLAN of Proposed LOT 203 being part of Lot 12 on RP866105



veris

BRISBANE (07) 3666 4700 WHITSUNDAYS (07) 4945 6600
MACKAY (07) 4957 9700 CAIRNS (07) 4252 9400

veris.com.au
ACN 615 735 727
Veris Australia Pty Ltd

Drawing No 401871-DP203 Issue B

LEGEND

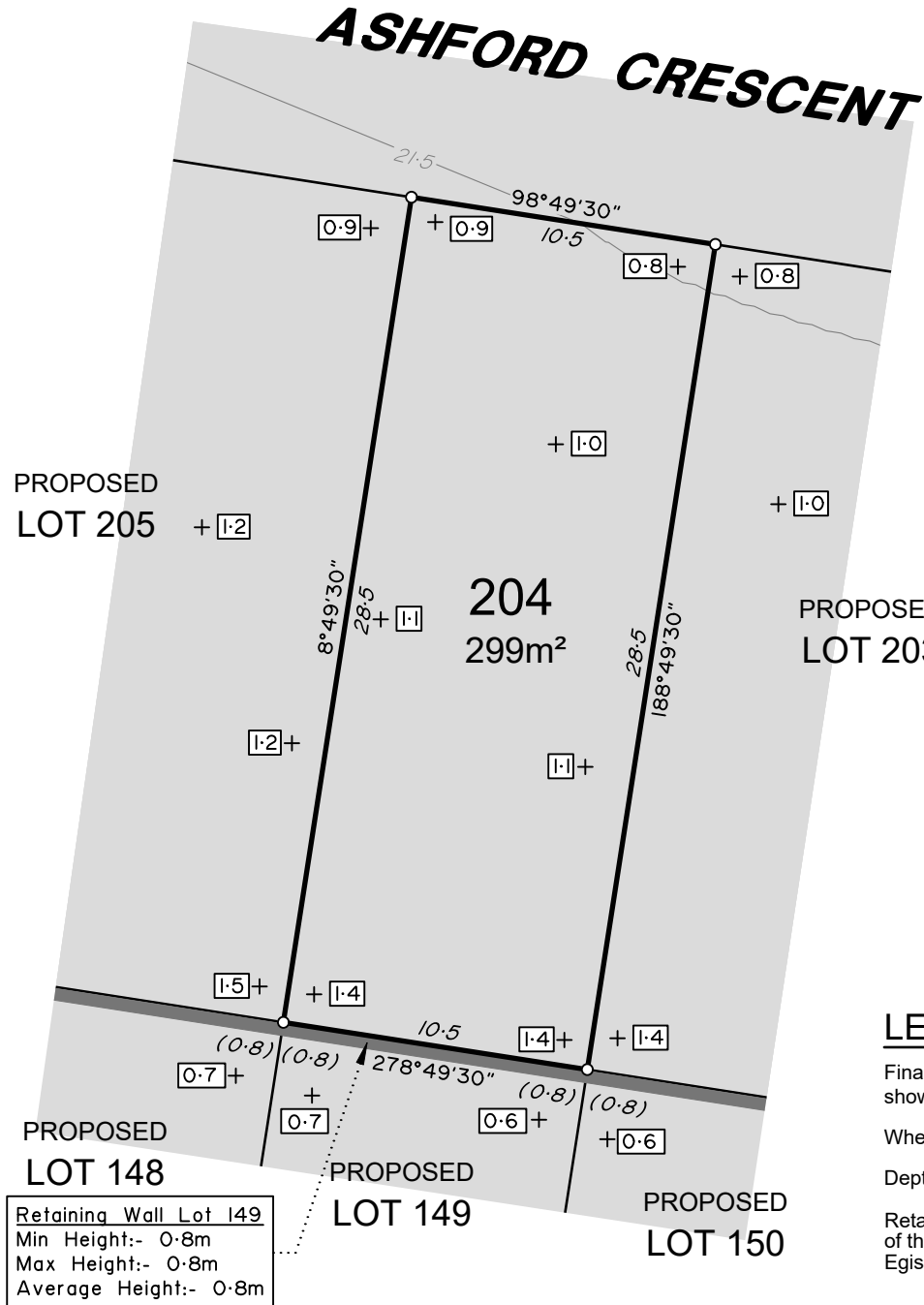
Final surface contours based on A.H.D. datum at an interval of 0.5m, shown as: — 15.5 —

Where applicable, areas to be filled are shown as:

Depth of fill, in metres, shown as:- +0.5

Retaining wall and retaining wall height, shown on the lower side of the wall, have been calculated from digital data supplied by Egis and shown as:

(1.2)



ADDITIONAL NOTES:

The LOT dimensions and area shown hereon are subject to final field survey and also to the requirements of Council and any other authority which may have requirements under any relevant legislation

Final surface contours shown hereon have been supplied by Egis.

Compaction of any fill material placed on this site shall be completed to level one inspection and testing services in accordance with AS3798-2007.

Depth of fill values are calculated to the lower of the pre-development surface and the ground surface from Survey.

Copyright © Veris Australia Pty Ltd August 2025

Lilywood Landings Stage 8 For Foreverlen Pty Ltd

IMPORTANT NOTES:

(These notes are an integral part of this plan)
This plan has been prepared for Foreverlen Pty Ltd for the purposes of A Disclosure Plan Under the Land Sales Act 1984 (as amended).
It is not to be used by any other person or corporation or for any other purposes and is subject to the following limitations:

Please refer to the approved Development Application for conditions relating to the LOT and to approved Operational Works drawings for services location and possible easements.

THESE DESIGNS AND DRAWINGS ARE COPYRIGHT AND ARE NOT TO BE USED OR REPRODUCED WITHOUT THE WRITTEN PERMISSION OF VERIS

Data Sources

Cadastral Boundaries: 401871-LC01-P.dwg
Engineering Design: X_22-000082_8_BASE-20250812.dwg
Final Surface Contours: 22-000082-5-12-Design-Contours-250mm-20250808.dwg
Depth of Fill: 22-000082-5-12-depth-contour-0.1m-20250808.dwg
Retaining Walls: X_22-000082_8_BASE-20250812.dwg

Issue	Revisions	Date	Drawn
B	Updated Engineering	12/08/2025	TEM
A	Original	6/02/2025	TEM

Locality: Lilywood
Local Authority: Moreton Bay C. C.
Horizontal Meridian: MGA, Zone56
Vertical Level Datum: AHD
Scale: 1:250 @ A4
Designed: Egis
Drawn: TEM 6/02/2025
Checked: DC
Plot Date: 08 Sep, 2025
Computer File Ref: 401871-S18-DP(B).dwg

DISCLOSURE PLAN
of Proposed LOT 204
being part of
Lot 12
on RP866105



veris

BRISBANE (07) 3666 4700
WHITSUNDAYS (07) 4945 6600
MACKAY (07) 4957 9700
CAIRNS (07) 4252 9400

veris.com.au
ACN 615 735 727
Veris Australia Pty Ltd

Drawing No 401871-DP204 Issue B

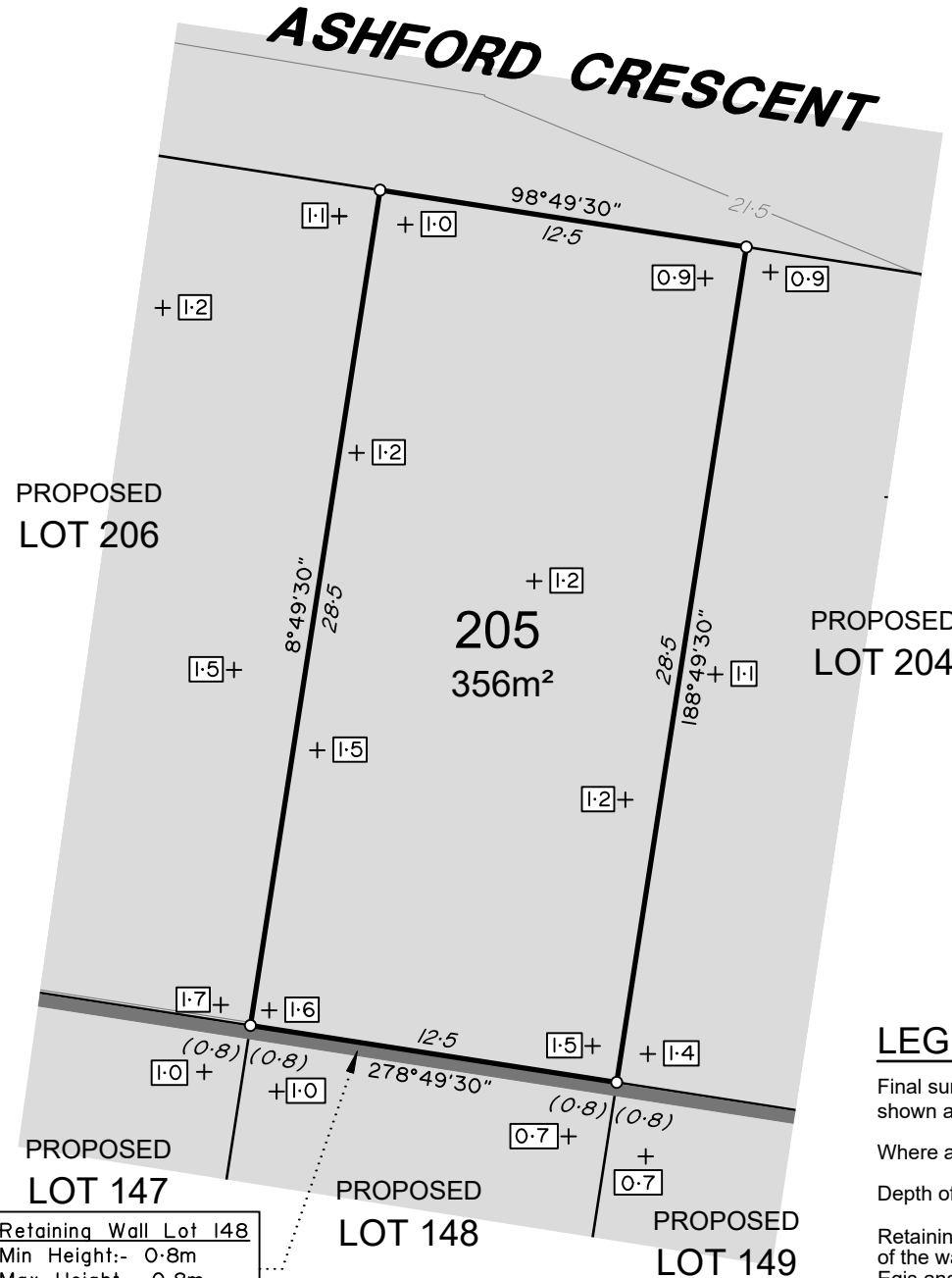
LEGEND

Final surface contours based on A.H.D. datum at an interval of 0.5m, shown as: 15.5

Where applicable, areas to be filled are shown as:

Depth of fill, in metres, shown as: +0.5

Retaining wall and retaining wall height, shown on the lower side of the wall, have been calculated from digital data supplied by Egis and shown as: (1.2)



Retaining Wall Lot 148
Min Height:- 0.8m
Max Height:- 0.8m
Average Height:- 0.8m

LEGEND

Final surface contours based on A.H.D. datum at an interval of 0.5m, shown as: — 15.5 —

Where applicable, areas to be filled are shown as:

Depth of fill, in metres, shown as:- +0.5

Retaining wall and retaining wall height, shown on the lower side of the wall, have been calculated from digital data supplied by Egis and shown as:

(1.2)

ADDITIONAL NOTES:

The LOT dimensions and area shown hereon are subject to final field survey and also to the requirements of Council and any other authority which may have requirements under any relevant legislation

Final surface contours shown hereon have been supplied by Egis.

Compaction of any fill material placed on this site shall be completed to level one inspection and testing services in accordance with AS3798-2007.

Depth of fill values are calculated to the lower of the pre-development surface and the ground surface from Survey.

Copyright © Veris Australia Pty Ltd August 2025

Lilywood Landings
Stage 8
For
Foreverlen Pty Ltd

IMPORTANT NOTES:

(These notes are an integral part of this plan)

This plan has been prepared for Foreverlen Pty Ltd for the purposes of A Disclosure Plan Under the Land Sales Act 1984 (as amended).

It is not to be used by any other person or corporation or for any other purposes and is subject to the following limitations:

Please refer to the approved Development Application for conditions relating to the LOT and to approved Operational Works drawings for services location and possible easements.

THESE DESIGNS AND DRAWINGS ARE COPYRIGHT AND ARE NOT TO BE USED OR REPRODUCED WITHOUT THE WRITTEN PERMISSION OF VERIS

Data Sources

Cadastral Boundaries: 401871-LC01-P.dwg

Engineering Design: X_22-000082_8_BASE-20250812.dwg

Final Surface Contours: 22-000082-5-12-Design-Contours-250mm-20250808.dwg

Depth of Fill: 22-000082-5-12-depth-contour-0.1m-20250808.dwg

Retaining Walls: X_22-000082_8_BASE-20250812.dwg

Issue	Revisions	Date	Drawn
B	Updated Engineering	12/08/2025	TEM
A	Original	6/02/2025	TEM

Locality: Lilywood
Local Authority: Moreton Bay C. C.
Horizontal Meridian: MGA, Zone56
Vertical Level Datum: AHD
Scale: 1:250 @ A4
Designed: Egis
Drawn: TEM 6/02/2025
Checked: DC
Plot Date: 08 Sep, 2025
Computer File Ref: 401871-S18-DP(B).dwg

DISCLOSURE PLAN
of Proposed LOT 205
being part of
Lot 12
on RP866105



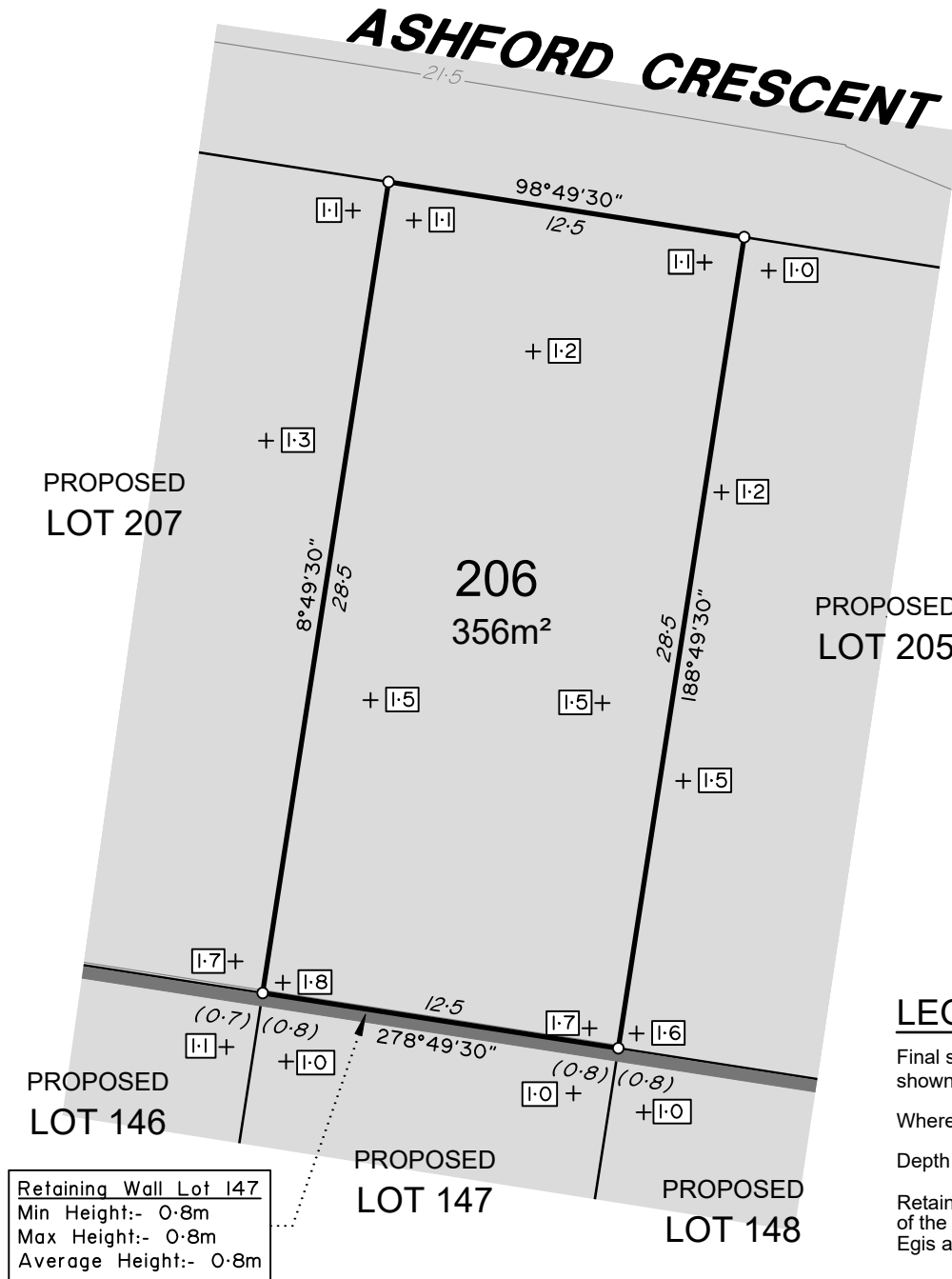
veris

BRISBANE (07) 3666 4700 WHITSUNDAYS (07) 4945 6600

MACKAY (07) 4957 9700 CAIRNS (07) 4252 9400

veris.com.au
ACN 615 735 727
Veris Australia Pty Ltd

Drawing No 401871-DP205 Issue B



ADDITIONAL NOTES:

The LOT dimensions and area shown hereon are subject to final field survey and also to the requirements of Council and any other authority which may have requirements under any relevant legislation

Final surface contours shown hereon have been supplied by Egis.

Compaction of any fill material placed on this site shall be completed to level one inspection and testing services in accordance with AS3798-2007.

Depth of fill values are calculated to the lower of the pre-development surface and the ground surface from Survey.

Copyright © Veris Australia Pty Ltd August 2025

Lilywood Landings Stage 8 For Foreverlen Pty Ltd

IMPORTANT NOTES:

(These notes are an integral part of this plan)
This plan has been prepared for Foreverlen Pty Ltd for the purposes of A Disclosure Plan Under the Land Sales Act 1984 (as amended).
It is not to be used by any other person or corporation or for any other purposes and is subject to the following limitations:

Please refer to the approved Development Application for conditions relating to the LOT and to approved Operational Works drawings for services location and possible easements.

THESE DESIGNS AND DRAWINGS ARE COPYRIGHT AND ARE NOT TO BE USED OR REPRODUCED WITHOUT THE WRITTEN PERMISSION OF VERIS

Data Sources

Cadastral Boundaries: 401871-LC01-P.dwg
Engineering Design: X_22-000082_8_BASE-20250812.dwg
Final Surface Contours: 22-000082-5-12-Design-Contours-250mm-20250808.dwg
Depth of Fill: 22-000082-5-12-depth-contour-0.1m-20250808.dwg
Retaining Walls: X_22-000082_8_BASE-20250812.dwg

Issue	Revisions	Date	Drawn
B	Updated Engineering	12/08/2025	TEM
A	Original	6/02/2025	TEM

Locality: Lilywood
Local Authority: Moreton Bay C. C.
Horizontal Meridian: MGA, Zone56
Vertical Level Datum: AHD
Scale: 1:250 @ A4
Designed: Egis
Drawn: TEM 6/02/2025
Checked: DC
Plot Date: 08 Sep, 2025
Computer File Ref: 401871-S18-DP(B).dwg

DISCLOSURE PLAN
of Proposed LOT 206
being part of
Lot 12
on RP866105



veris

BRISBANE WHITSUNDAYS
(07) 3666 4700 (07) 4945 6600
MACKAY CAIRNS
(07) 4957 9700 (07) 4252 9400

veris.com.au
ACN 615 735 727
Veris Australia Pty Ltd

Drawing No Issue
401871-DP206 B

LEGEND

Final surface contours based on A.H.D. datum at an interval of 0.5m, shown as: 15.5

Where applicable, areas to be filled are shown as:

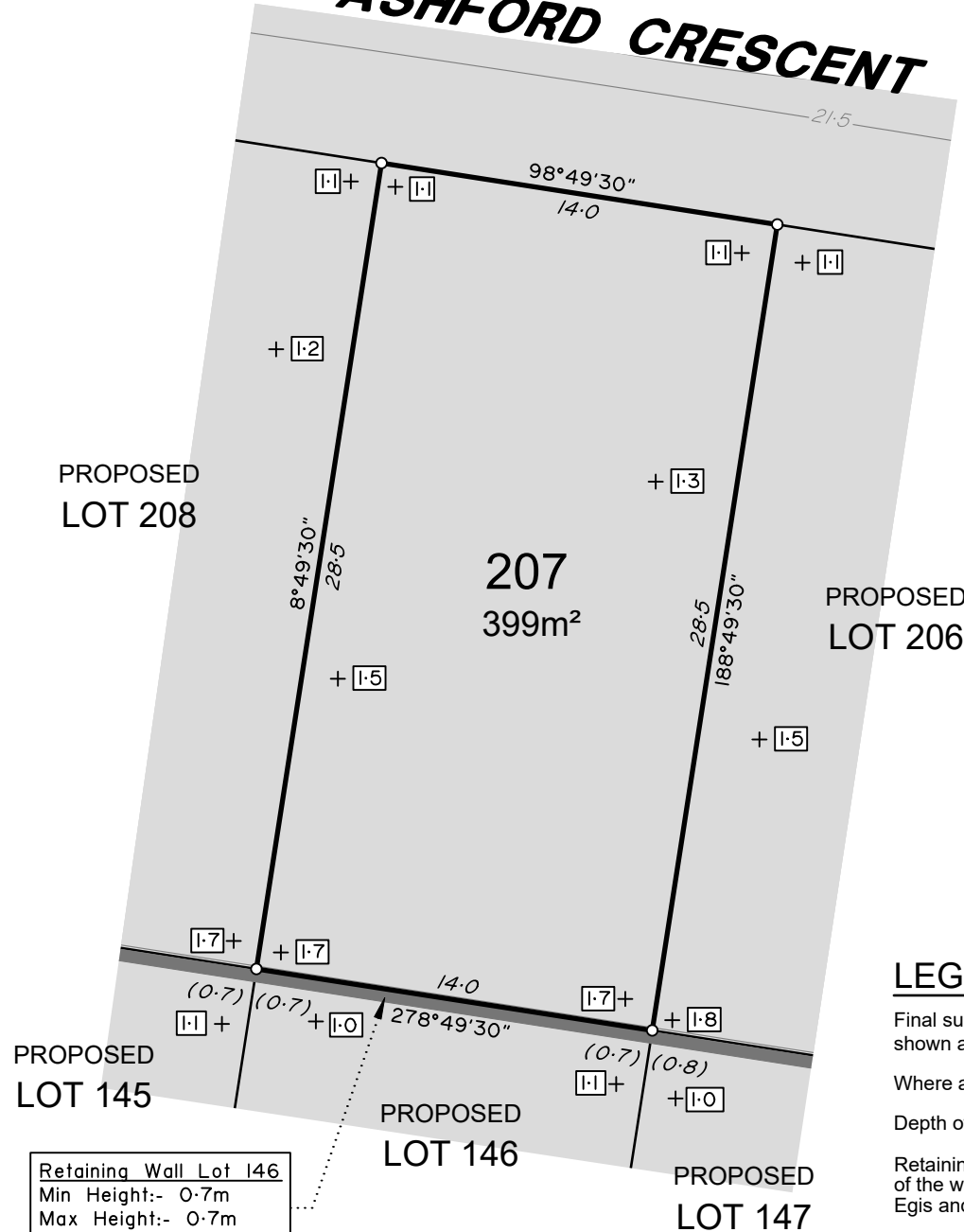
Depth of fill, in metres, shown as:- +0.5

Retaining wall and retaining wall height, shown on the lower side of the wall, have been calculated from digital data supplied by Egis and shown as:

(1.2)



ASHFORD CRESCENT



PROPOSED
LOT 208

207
399m²

PROPOSED
LOT 206


PROPOSED
LOT 145


PROPOSED
LOT 146

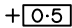
PROPOSED
LOT 147


Retaining Wall Lot 146
Min Height:- 0.7m
Max Height:- 0.7m
Average Height:- 0.7m

LEGEND

Final surface contours based on A.H.D. datum at an interval of 0.5m, shown as: 

Where applicable, areas to be filled are shown as: 

Depth of fill, in metres, shown as:- 

Retaining wall and retaining wall height, shown on the lower side of the wall, have been calculated from digital data supplied by Egis and shown as: 

(1.2)

ADDITIONAL NOTES:

The LOT dimensions and area shown hereon are subject to final field survey and also to the requirements of Council and any other authority which may have requirements under any relevant legislation

Final surface contours shown hereon have been supplied by Egis.

Compaction of any fill material placed on this site shall be completed to level one inspection and testing services in accordance with AS3798-2007.

Depth of fill values are calculated to the lower of the pre-development surface and the ground surface from Survey.

Copyright © Veris Australia Pty Ltd August 2025

Lilywood Landings
Stage 8
For
Foreverlen Pty Ltd

IMPORTANT NOTES:

(These notes are an integral part of this plan)
This plan has been prepared for Foreverlen Pty Ltd for the purposes of a Disclosure Plan Under the Land Sales Act 1984 (as amended).
It is not to be used by any other person or corporation or for any other purposes and is subject to the following limitations:

Please refer to the approved Development Application for conditions relating to the LOT and to approved Operational Works drawings for services location and possible easements.

THESE DESIGNS AND DRAWINGS ARE COPYRIGHT AND ARE NOT TO BE USED OR REPRODUCED WITHOUT THE WRITTEN PERMISSION OF VERIS

Data Sources

Cadastral Boundaries: 401871-LC01-P.dwg
Engineering Design: X_22-000082_8_BASE-20250812.dwg
Final Surface Contours: 22-000082-5-12-Design-Contours-250mm-20250808.dwg
Depth of Fill: 22-000082-5-12-depth-contour-0.1m-20250808.dwg
Retaining Walls: X_22-000082_8_BASE-20250812.dwg

Issue	Revisions	Date	Drawn
B	Updated Engineering	12/08/2025	TEM
A	Original	6/02/2025	TEM

Locality: Lilywood
Local Authority: Moreton Bay C. C.
Horizontal Meridian: MGA, Zone56
Vertical Level Datum: AHD
Scale: 1:250 @ A4
Designed: Egis
Drawn: TEM 6/02/2025
Checked: DC
Plot Date: 08 Sep, 2025
Computer File Ref: 401871-S18-DP(B).dwg

DISCLOSURE PLAN
of Proposed LOT 207
being part of
Lot 12
on RP866105



veris

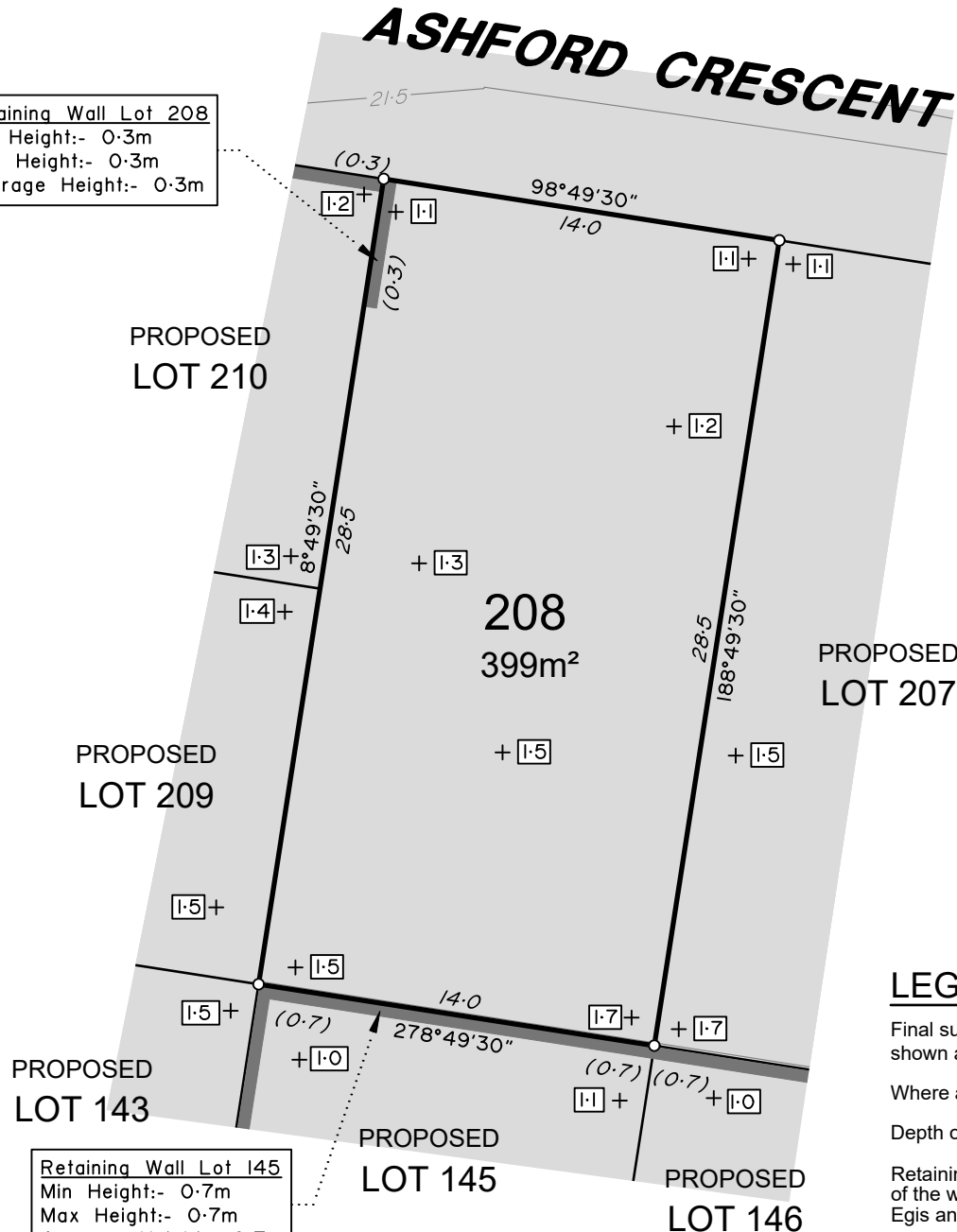
BRISBANE (07) 3666 4700
WHITSUNDAYS (07) 4945 6600
MACKAY (07) 4957 9700
CAIRNS (07) 4252 9400

veris.com.au
ACN 615 735 727
Veris Australia Pty Ltd

Drawing No 401871-DP207 Issue B



Retaining Wall Lot 208
Min Height:- 0.3m
Max Height:- 0.3m
Average Height:- 0.3m



Retaining Wall Lot 145
Min Height:- 0.7m
Max Height:- 0.7m
Average Height:- 0.7m

ADDITIONAL NOTES:

The LOT dimensions and area shown hereon are subject to final field survey and also to the requirements of Council and any other authority which may have requirements under any relevant legislation

Final surface contours shown hereon have been supplied by Egis.

Compaction of any fill material placed on this site shall be completed to level one inspection and testing services in accordance with AS3798-2007.

Depth of fill values are calculated to the lower of the pre-development surface and the ground surface from Survey.

Copyright © Veris Australia Pty Ltd August 2025

Lilywood Landings Stage 8 For Foreverlen Pty Ltd

IMPORTANT NOTES:

(These notes are an integral part of this plan)
This plan has been prepared for Foreverlen Pty Ltd for the purposes of a Disclosure Plan Under the Land Sales Act 1984 (as amended).
It is not to be used by any other person or corporation or for any other purposes and is subject to the following limitations:

Please refer to the approved Development Application for conditions relating to the LOT and to approved Operational Works drawings for services location and possible easements.

THESE DESIGNS AND DRAWINGS ARE COPYRIGHT AND ARE NOT TO BE USED OR REPRODUCED WITHOUT THE WRITTEN PERMISSION OF VERIS

Data Sources

Cadastral Boundaries: 401871-LC01-P.dwg
Engineering Design: X_22-000082_8_BASE-20250812.dwg
Final Surface Contours: 22-000082-5-12-Design-Contours-250mm-20250808.dwg
Depth of Fill: 22-000082-5-12-depth-contour-0.1m-20250808.dwg
Retaining Walls: X_22-000082_8_BASE-20250812.dwg

Issue	Revisions	Date	Drawn
B	Updated Engineering	12/08/2025	TEM
A	Original	6/02/2025	TEM

Locality: Lilywood
Local Authority: Moreton Bay C. C.
Horizontal Meridian: MGA, Zone56
Vertical Level Datum: AHD
Scale: 1:250 @ A4
Designed: Egis
Drawn: TEM 6/02/2025
Checked: DC
Plot Date: 08 Sep, 2025
Computer File Ref: 401871-S18-DP(B).dwg

DISCLOSURE PLAN
of Proposed LOT 208
being part of
Lot 12
on RP866105



veris

BRISBANE WHITSUNDAYS
(07) 3666 4700 (07) 4945 6600
MACKAY CAIRNS
(07) 4957 9700 (07) 4252 9400

veris.com.au
ACN 615 735 727
Veris Australia Pty Ltd

Drawing No 401871-DP208 Issue B

LEGEND

Final surface contours based on A.H.D. datum at an interval of 0.5m, shown as:

Where applicable, areas to be filled are shown as:

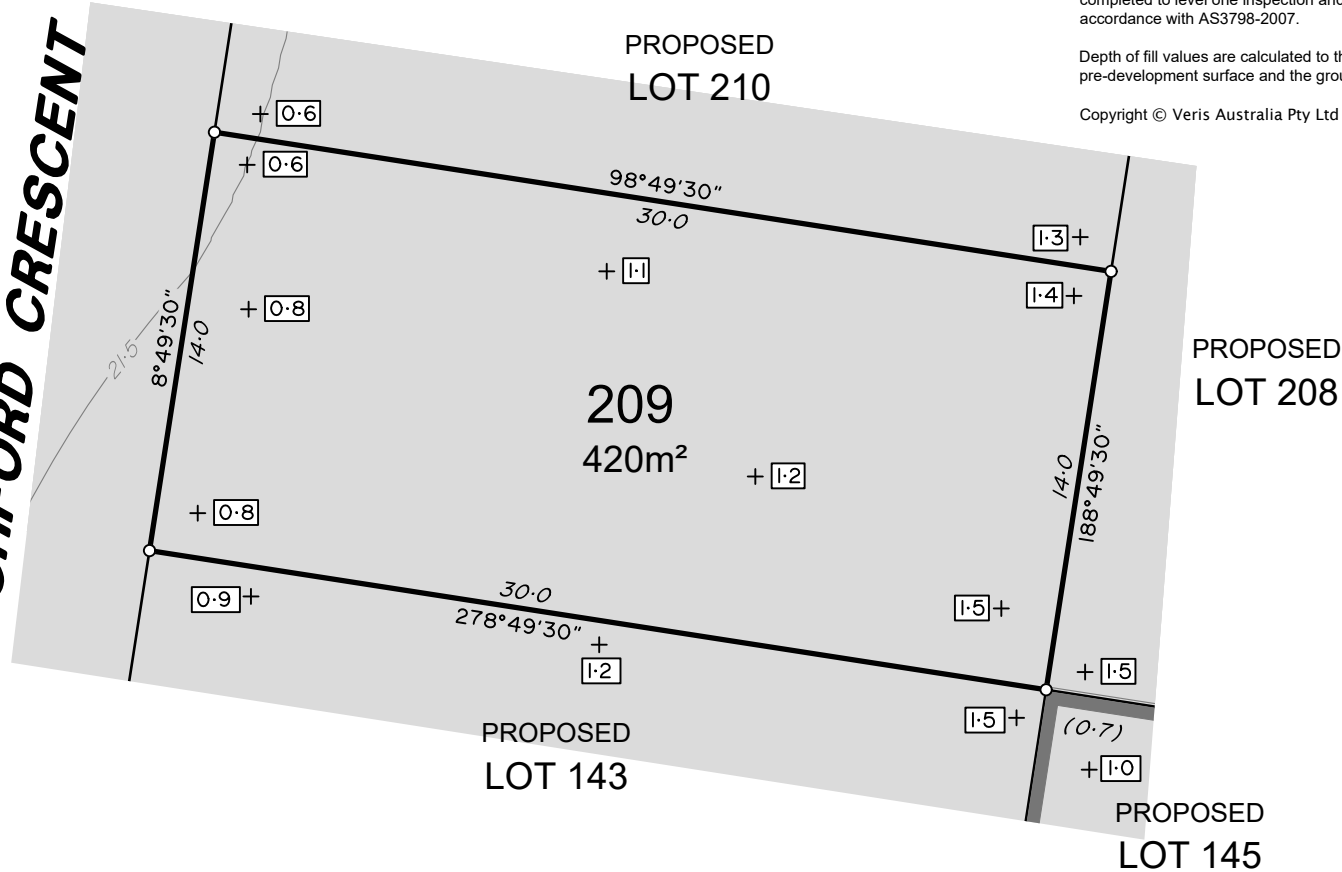
Depth of fill, in metres, shown as:-

Retaining wall and retaining wall height, shown on the lower side of the wall, have been calculated from digital data supplied by Egis and shown as:

(1.2)



ASHFORD CRESCENT



ADDITIONAL NOTES:

The LOT dimensions and area shown hereon are subject to final field survey and also to the requirements of Council and any other authority which may have requirements under any relevant legislation

Final surface contours shown hereon have been supplied by Egis.

Compaction of any fill material placed on this site shall be completed to level one inspection and testing services in accordance with AS3798-2007.

Depth of fill values are calculated to the lower of the pre-development surface and the ground surface from Survey.

Copyright © Veris Australia Pty Ltd August 2025

Lilywood Landings Stage 8 For Foreverlen Pty Ltd

IMPORTANT NOTES:

(These notes are an integral part of this plan)
This plan has been prepared for Foreverlen Pty Ltd for the purposes of A Disclosure Plan Under the Land Sales Act 1984 (as amended).
It is not to be used by any other person or corporation or for any other purposes and is subject to the following limitations:

Please refer to the approved Development Application for conditions relating to the LOT and to approved Operational Works drawings for services location and possible easements.

THESE DESIGNS AND DRAWINGS ARE COPYRIGHT AND ARE NOT TO BE USED OR REPRODUCED WITHOUT THE WRITTEN PERMISSION OF VERIS

Data Sources
Cadastral Boundaries: 401871-LC01-P.dwg
Engineering Design: X_22-000082_8_BASE-20250812.dwg
Final Surface Contours: 22-000082-5-12-Design-Contours-250mm-20250808.dwg
Depth of Fill: 22-000082-5-12-Design-Contours-250mm-20250808.dwg
Retaining Walls: X_22-000082_8_BASE-20250812.dwg

Issue	Revisions	Date	Drawn
B	Updated Engineering	12/08/2025	TEM
A	Original	6/02/2025	TEM

Locality: Lilywood
Local Authority: Moreton Bay C. C.
Horizontal Meridian: MGA, Zone56
Vertical Level Datum: AHD
Scale: 1:250 @ A4
Designed: Egis
Drawn: TEM 6/02/2025
Checked: DC
Plot Date: 08 Sep, 2025
Computer File Ref: 401871-S18-DP(B).dwg

DISCLOSURE PLAN
of Proposed LOT 209
being part of
Lot 12
on RP866105



veris

BRISBANE WHITSUNDAYS
(07) 3666 4700 (07) 4945 6600
MACKAY CAIRNS
(07) 4957 9700 (07) 4252 9400

veris.com.au
ACN 615 735 727
Veris Australia Pty Ltd

Drawing No Issue
401871-DP209 B

LEGEND

Final surface contours based on A.H.D. datum at an interval of 0.5m, shown as: — 15.5 —

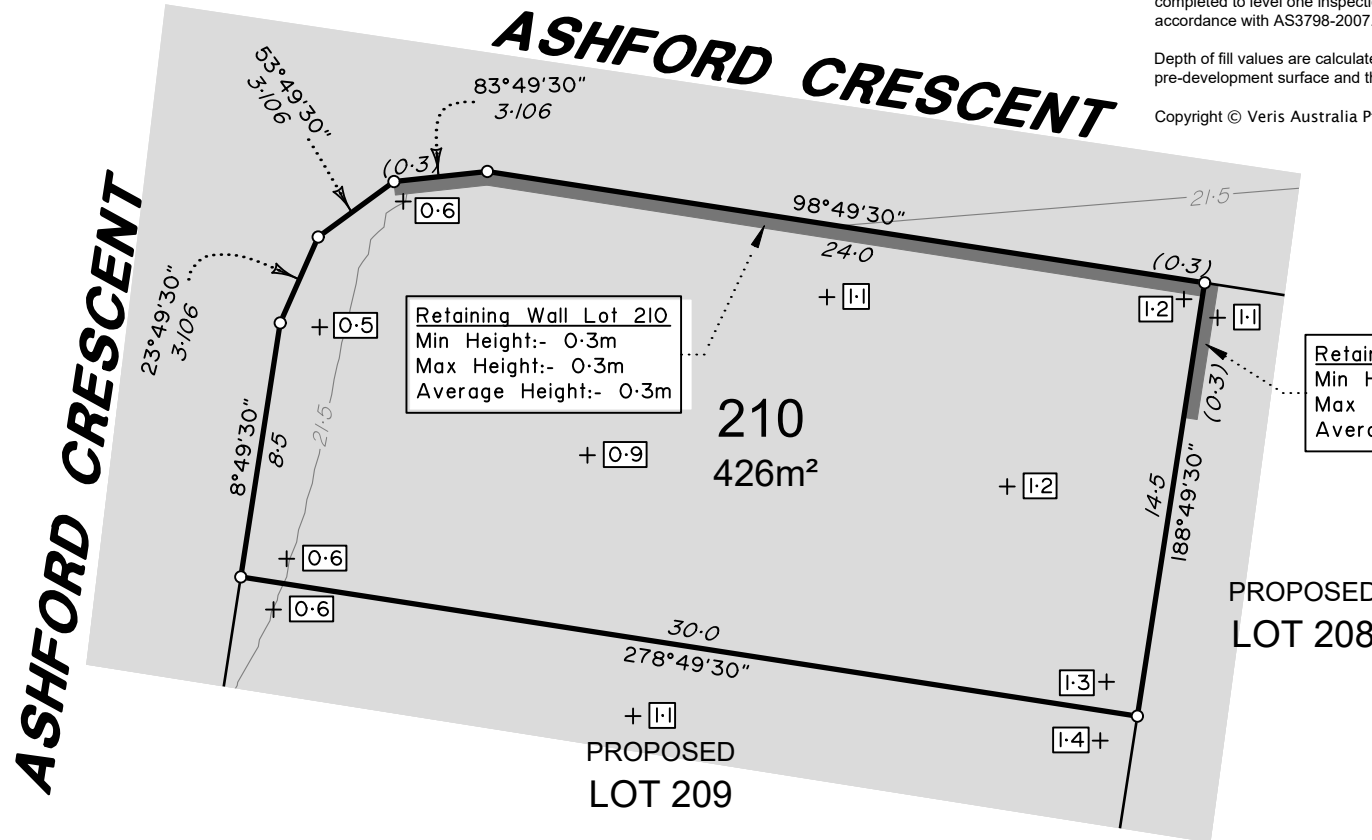
Where applicable, areas to be filled are shown as:

Depth of fill, in metres, shown as:- +0.5

Retaining wall and retaining wall height, shown on the lower side of the wall, have been calculated from digital data supplied by Egis and shown as:

(1.2)

0 12.5m 50 mm 25m 100 mm 37.5m 150 mm SCALE BAR



ADDITIONAL NOTES:

The LOT dimensions and area shown hereon are subject to final field survey and also to the requirements of Council and any other authority which may have requirements under any relevant legislation

Final surface contours shown hereon have been supplied by Egis.

Compaction of any fill material placed on this site shall be completed to level one inspection and testing services in accordance with AS3798-2007.

Depth of fill values are calculated to the lower of the pre-development surface and the ground surface from Survey.

Copyright © Veris Australia Pty Ltd August 2025

Lilywood Landings Stage 8 For Foreverlen Pty Ltd

IMPORTANT NOTES:

(These notes are an integral part of this plan)
This plan has been prepared for Foreverlen Pty Ltd for the purposes of A Disclosure Plan Under the Land Sales Act 1984 (as amended).
It is not to be used by any other person or corporation or for any other purposes and is subject to the following limitations:

Please refer to the approved Development Application for conditions relating to the LOT and to approved Operational Works drawings for services location and possible easements.

THESE DESIGNS AND DRAWINGS ARE COPYRIGHT AND ARE NOT TO BE USED OR REPRODUCED WITHOUT THE WRITTEN PERMISSION OF VERIS

Data Sources

Cadastral Boundaries: 401871-LC01-P.dwg
Engineering Design: X_22-000082_8_BASE-20250812.dwg
Final Surface Contours: 22-000082-5-12-Design-Contours-250mm-20250808.dwg
Depth of Fill: 22-000082-5-12-Depth-contour-0.1m-20250808.dwg
Retaining Walls: X_22-000082_8_BASE-20250812.dwg

Issue	Revisions	Date	Drawn
B	Updated Engineering	12/08/2025	TEM
A	Original	6/02/2025	TEM

Locality: Lilywood
Local Authority: Moreton Bay C. C.
Horizontal Meridian: MGA, Zone56
Vertical Level Datum: AHD
Scale: 1:250 @ A4
Designed: Egis
Drawn: TEM 6/02/2025
Checked: DC
Plot Date: 08 Sep, 2025
Computer File Ref: 401871-S18-DP(B).dwg

DISCLOSURE PLAN
of Proposed LOT 210
being part of
Lot 12
on RP866105



veris

BRISBANE WHITSUNDAYS
(07) 3666 4700 (07) 4945 6600
MACKAY CAIRNS
(07) 4957 9700 (07) 4252 9400

veris.com.au
ACN 615 735 727
Veris Australia Pty Ltd

Drawing No Issue
401871-DP210 B

LEGEND

Final surface contours based on A.H.D. datum at an interval of 0.5m, shown as: — 15.5 —

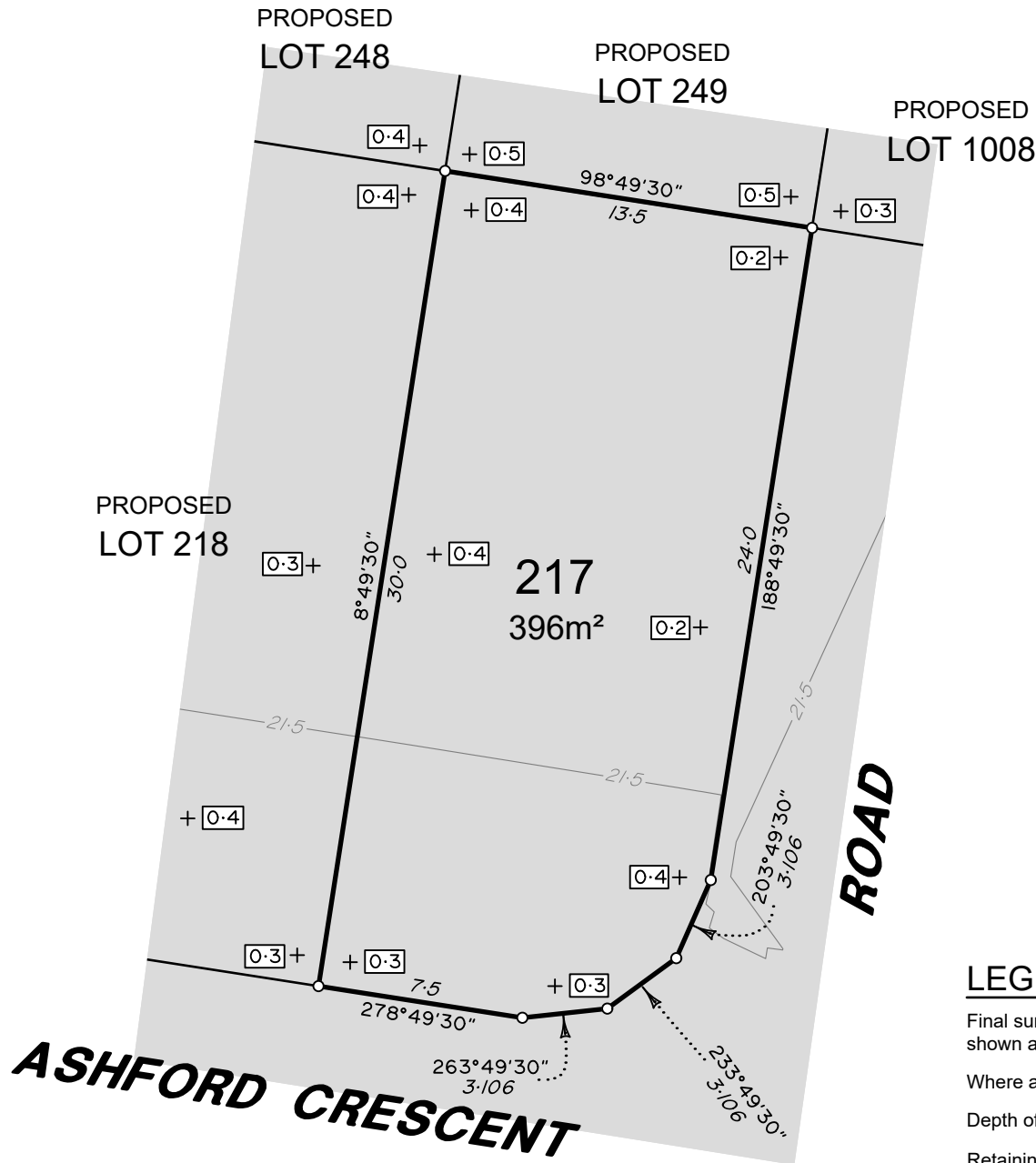
Where applicable, areas to be filled are shown as:

Depth of fill, in metres, shown as:- +0.5

Retaining wall and retaining wall height, shown on the lower side of the wall, have been calculated from digital data supplied by Egis and shown as:

(1.2)

0 12.5m 50 mm 25m 100 mm 37.5m 150 mm SCALE BAR



ADDITIONAL NOTES:

The LOT dimensions and area shown hereon are subject to final field survey and also to the requirements of Council and any other authority which may have requirements under any relevant legislation

Final surface contours shown hereon have been supplied by Egis.

Compaction of any fill material placed on this site shall be completed to level one inspection and testing services in accordance with AS3798-2007.

Depth of fill values are calculated to the lower of the pre-development surface and the ground surface from Survey.

Copyright © Veris Australia Pty Ltd August 2025

Lilywood Landings Stage 8 For Foreverlen Pty Ltd

IMPORTANT NOTES:

(These notes are an integral part of this plan)
This plan has been prepared for Foreverlen Pty Ltd for the purposes of A Disclosure Plan Under the Land Sales Act 1984 (as amended).
It is not to be used by any other person or corporation or for any other purposes and is subject to the following limitations:

Please refer to the approved Development Application for conditions relating to the LOT and to approved Operational Works drawings for services location and possible easements.

THESE DESIGNS AND DRAWINGS ARE COPYRIGHT AND ARE NOT TO BE USED OR REPRODUCED WITHOUT THE WRITTEN PERMISSION OF VERIS

Data Sources

Cadastral Boundaries: 401871-LC01-P.dwg
Engineering Design: X_22-000082_8_BASE-20250812.dwg
Final Surface Contours: 22-000082-5-12-Design-Contours-250mm-20250808.dwg
Depth of Fill: 22-000082-5-12-Design-Contours-250mm-20250808.dwg
Retaining Walls: X_22-000082_8_BASE-20250812.dwg

Issue	Revisions	Date	Drawn
B	Updated Engineering	12/08/2025	TEM
A	Original	6/02/2025	TEM

Locality: Lilywood
Local Authority: Moreton Bay C. C.
Horizontal Meridian: MGA, Zone56
Vertical Level Datum: AHD
Scale: 1:250 @ A4
Designed: Egis
Drawn: TEM 6/02/2025
Checked: DC
Plot Date: 08 Sep, 2025
Computer File Ref: 401871-S18-DP(B).dwg

DISCLOSURE PLAN
of Proposed LOT 217
being part of
Lot 12
on RP866105



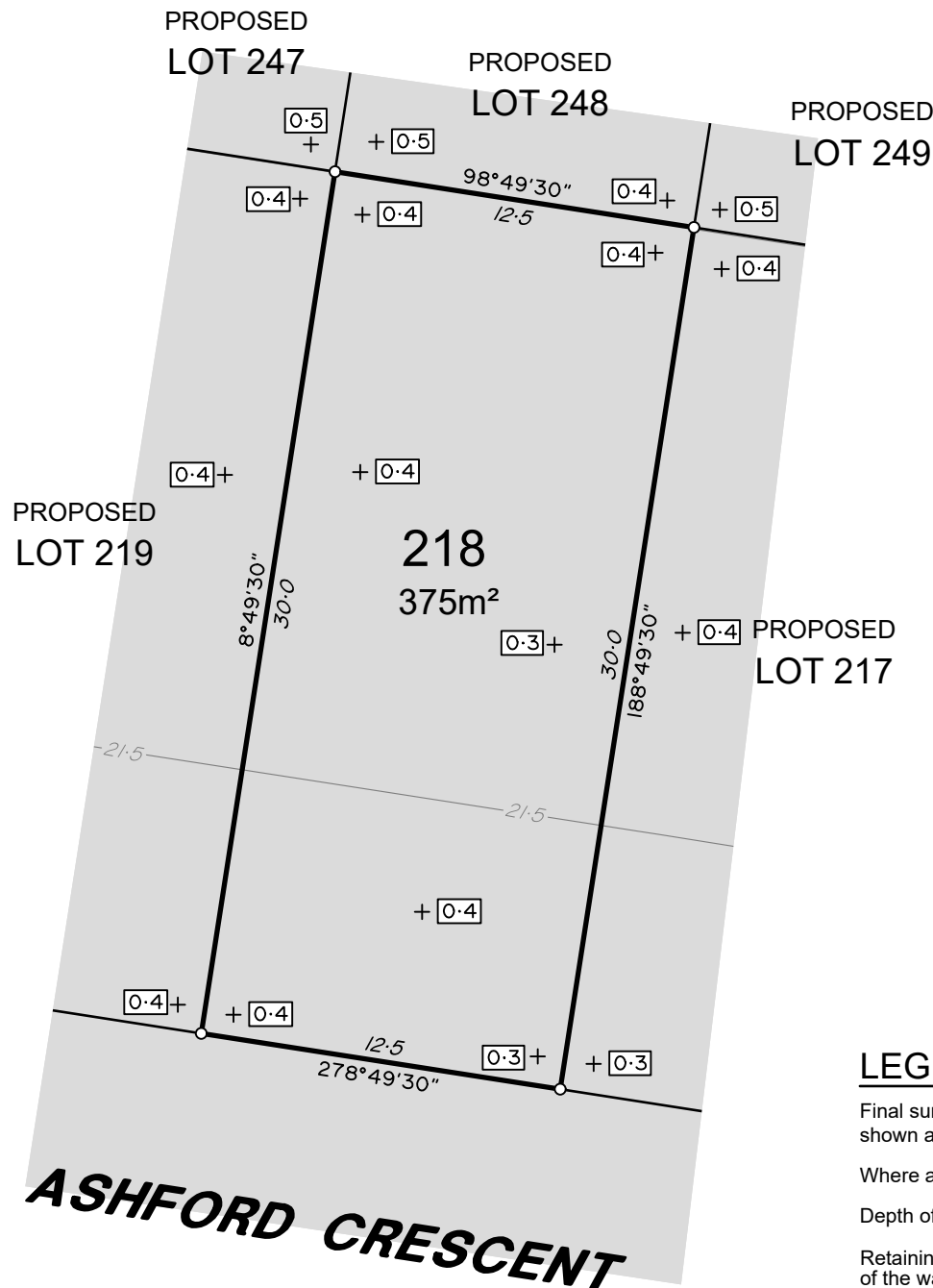
veris

BRISBANE (07) 3666 4700 WHITSUNDAYS (07) 4945 6600

MACKAY (07) 4957 9700 CAIRNS (07) 4252 9400

veris.com.au
ACN 615 735 727
Veris Australia Pty Ltd

Drawing No 401871-DP217 Issue B



ADDITIONAL NOTES:

The LOT dimensions and area shown hereon are subject to final field survey and also to the requirements of Council and any other authority which may have requirements under any relevant legislation

Final surface contours shown hereon have been supplied by Egis.

Compaction of any fill material placed on this site shall be completed to level one inspection and testing services in accordance with AS3798-2007.

Depth of fill values are calculated to the lower of the pre-development surface and the ground surface from Survey.

Copyright © Veris Australia Pty Ltd August 2025

Lilywood Landings Stage 8 For Foreverlen Pty Ltd

IMPORTANT NOTES:

(These notes are an integral part of this plan)
This plan has been prepared for Foreverlen Pty Ltd for the purposes of A Disclosure Plan Under the Land Sales Act 1984 (as amended).
It is not to be used by any other person or corporation or for any other purposes and is subject to the following limitations:

Please refer to the approved Development Application for conditions relating to the LOT and to approved Operational Works drawings for services location and possible easements.

THESE DESIGNS AND DRAWINGS ARE COPYRIGHT AND ARE NOT TO BE USED OR REPRODUCED WITHOUT THE WRITTEN PERMISSION OF VERIS

Data Sources

Cadastral Boundaries: 401871-LC01-P.dwg
Engineering Design: X_22-000082_8_BASE-20250812.dwg
Final Surface Contours: 22-000082-5-12-Design-Contours-250mm-20250808.dwg
Depth of Fill: 22-000082-5-12-depth-contour-0.1m-20250808.dwg
Retaining Walls: X_22-000082_8_BASE-20250812.dwg

Issue	Revisions	Date	Drawn
B	Updated Engineering	12/08/2025	TEM
A	Original	6/02/2025	TEM

Locality: Lilywood
Local Authority: Moreton Bay C. C.
Horizontal Meridian: MGA, Zone56
Vertical Level Datum: AHD
Scale: 1:250 @ A4
Designed: Egis
Drawn: TEM 6/02/2025
Checked: DC
Plot Date: 08 Sep, 2025
Computer File Ref: 401871-S18-DP(B).dwg

DISCLOSURE PLAN
of Proposed LOT 218
being part of
Lot 12
on RP866105



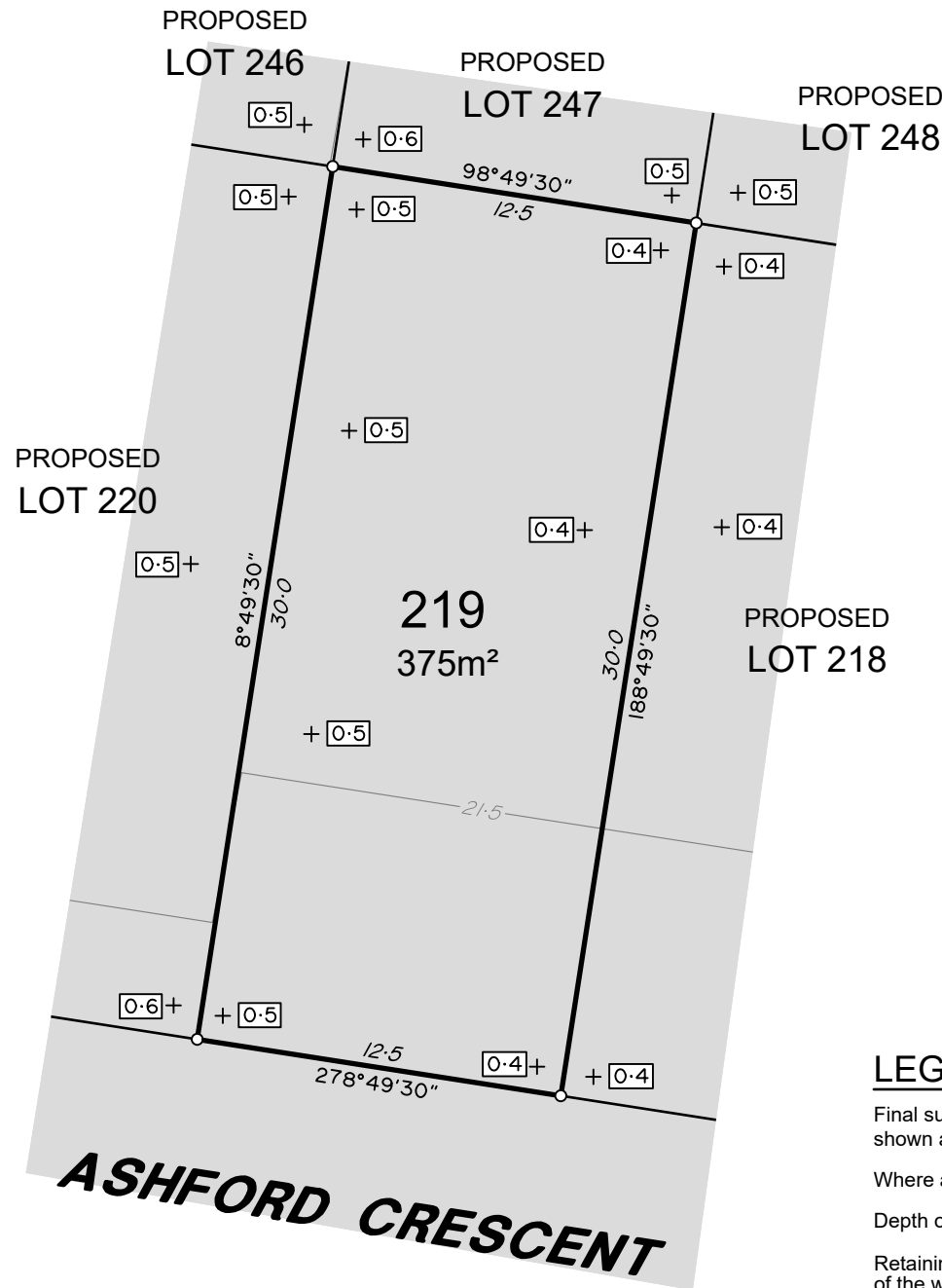
veris

BRISBANE (07) 3666 4700 WHITSUNDAYS (07) 4945 6600

MACKAY (07) 4957 9700 CAIRNS (07) 4252 9400

veris.com.au
ACN 615 735 727
Veris Australia Pty Ltd

Drawing No 401871-DP218 Issue B



ADDITIONAL NOTES:

The LOT dimensions and area shown hereon are subject to final field survey and also to the requirements of Council and any other authority which may have requirements under any relevant legislation

Final surface contours shown hereon have been supplied by Egis.

Compaction of any fill material placed on this site shall be completed to level one inspection and testing services in accordance with AS3798-2007.

Depth of fill values are calculated to the lower of the pre-development surface and the ground surface from Survey.

Copyright © Veris Australia Pty Ltd August 2025

Lilywood Landings Stage 8 For Foreverlen Pty Ltd

IMPORTANT NOTES:

(These notes are an integral part of this plan)
This plan has been prepared for Foreverlen Pty Ltd for the purposes of A Disclosure Plan Under the Land Sales Act 1984 (as amended).
It is not to be used by any other person or corporation or for any other purposes and is subject to the following limitations:

Please refer to the approved Development Application for conditions relating to the LOT and to approved Operational Works drawings for services location and possible easements.

THESE DESIGNS AND DRAWINGS ARE COPYRIGHT AND ARE NOT TO BE USED OR REPRODUCED WITHOUT THE WRITTEN PERMISSION OF VERIS

Data Sources

Cadastral Boundaries: 401871-LC01-P.dwg
Engineering Design: X_22-000082_8_BASE-20250812.dwg
Final Surface Contours: 22-000082-5-12-Design-Contours-250mm-20250808.dwg
Depth of Fill: 22-000082-5-12-depth-contour-0.1m-20250808.dwg
Retaining Walls: X_22-000082_8_BASE-20250812.dwg

Issue	Revisions	Date	Drawn
B	Updated Engineering	12/08/2025	TEM
A	Original	6/02/2025	TEM

Locality: Lilywood
Local Authority: Moreton Bay C. C.
Horizontal Meridian: MGA, Zone56
Vertical Level Datum: AHD
Scale: 1:250 @ A4
Designed: Egis
Drawn: TEM 6/02/2025
Checked: DC
Plot Date: 08 Sep, 2025
Computer File Ref: 401871-S18-DP(B).dwg

DISCLOSURE PLAN
of Proposed LOT 219
being part of
Lot 12
on RP866105

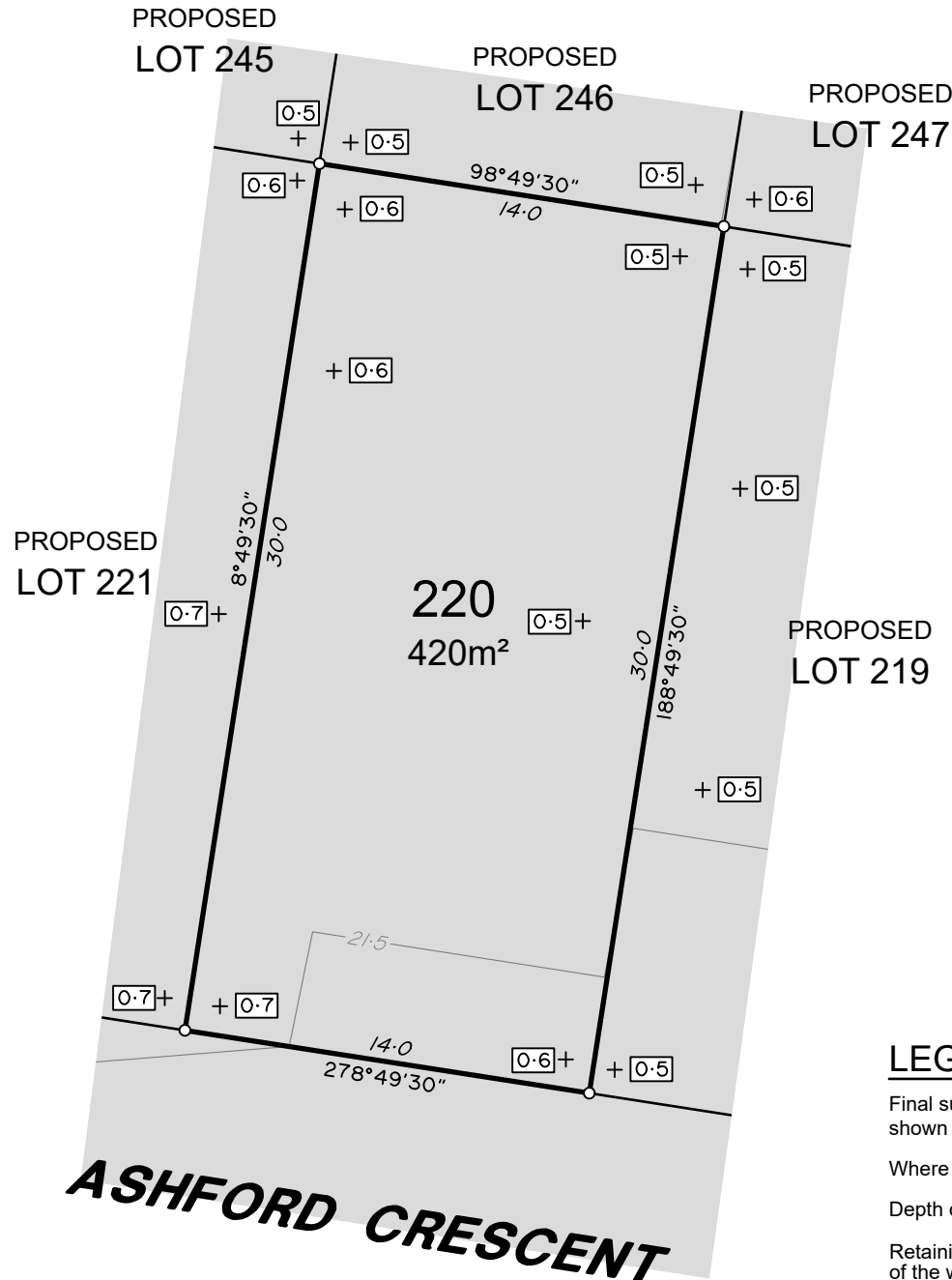


veris

BRISBANE (07) 3666 4700 WHITSUNDAYS (07) 4945 6600
MACKAY (07) 4957 9700 CAIRNS (07) 4252 9400

veris.com.au
ACN 615 735 727
Veris Australia Pty Ltd

Drawing No 401871-DP219 Issue B



ADDITIONAL NOTES:

The LOT dimensions and area shown hereon are subject to final field survey and also to the requirements of Council and any other authority which may have requirements under any relevant legislation

Final surface contours shown hereon have been supplied by Egis.

Compaction of any fill material placed on this site shall be completed to level one inspection and testing services in accordance with AS3798-2007.

Depth of fill values are calculated to the lower of the pre-development surface and the ground surface from Survey.

Copyright © Veris Australia Pty Ltd August 2025

Lilywood Landings Stage 8 For Foreverlen Pty Ltd

IMPORTANT NOTES:

(These notes are an integral part of this plan)
This plan has been prepared for Foreverlen Pty Ltd for the purposes of A Disclosure Plan Under the Land Sales Act 1984 (as amended).
It is not to be used by any other person or corporation or for any other purposes and is subject to the following limitations:

Please refer to the approved Development Application for conditions relating to the LOT and to approved Operational Works drawings for services location and possible easements.

THESE DESIGNS AND DRAWINGS ARE COPYRIGHT AND ARE NOT TO BE USED OR REPRODUCED WITHOUT THE WRITTEN PERMISSION OF VERIS

Data Sources

Cadastral Boundaries: 401871-LC01-P.dwg
Engineering Design: X_22-000082_8_BASE-20250812.dwg
Final Surface Contours: 22-000082-5-12-Design-Contours-250mm-20250808.dwg
Depth of Fill: 22-000082-5-12-Design-Contours-250mm-20250808.dwg
Retaining Walls: X_22-000082_8_BASE-20250812.dwg

Issue	Revisions	Date	Drawn
B	Updated Engineering	12/08/2025	TEM
A	Original	6/02/2025	TEM

Locality: Lilywood
Local Authority: Moreton Bay C. C.
Horizontal Meridian: MGA, Zone56
Vertical Level Datum: AHD
Scale: 1:250 @ A4
Designed: Egis
Drawn: TEM 6/02/2025
Checked: DC
Plot Date: 08 Sep, 2025
Computer File Ref: 401871-S18-DP(B).dwg

DISCLOSURE PLAN
of Proposed LOT 220
being part of
Lot 12
on RP866105



veris

BRISBANE (07) 3666 4700 WHITSUNDAYS (07) 4945 6600

MACKAY (07) 4957 9700 CAIRNS (07) 4252 9400

veris.com.au
ACN 615 735 727
Veris Australia Pty Ltd

Drawing No 401871-DP220 Issue B

LEGEND

Final surface contours based on A.H.D. datum at an interval of 0.5m, shown as: — 15.5 —

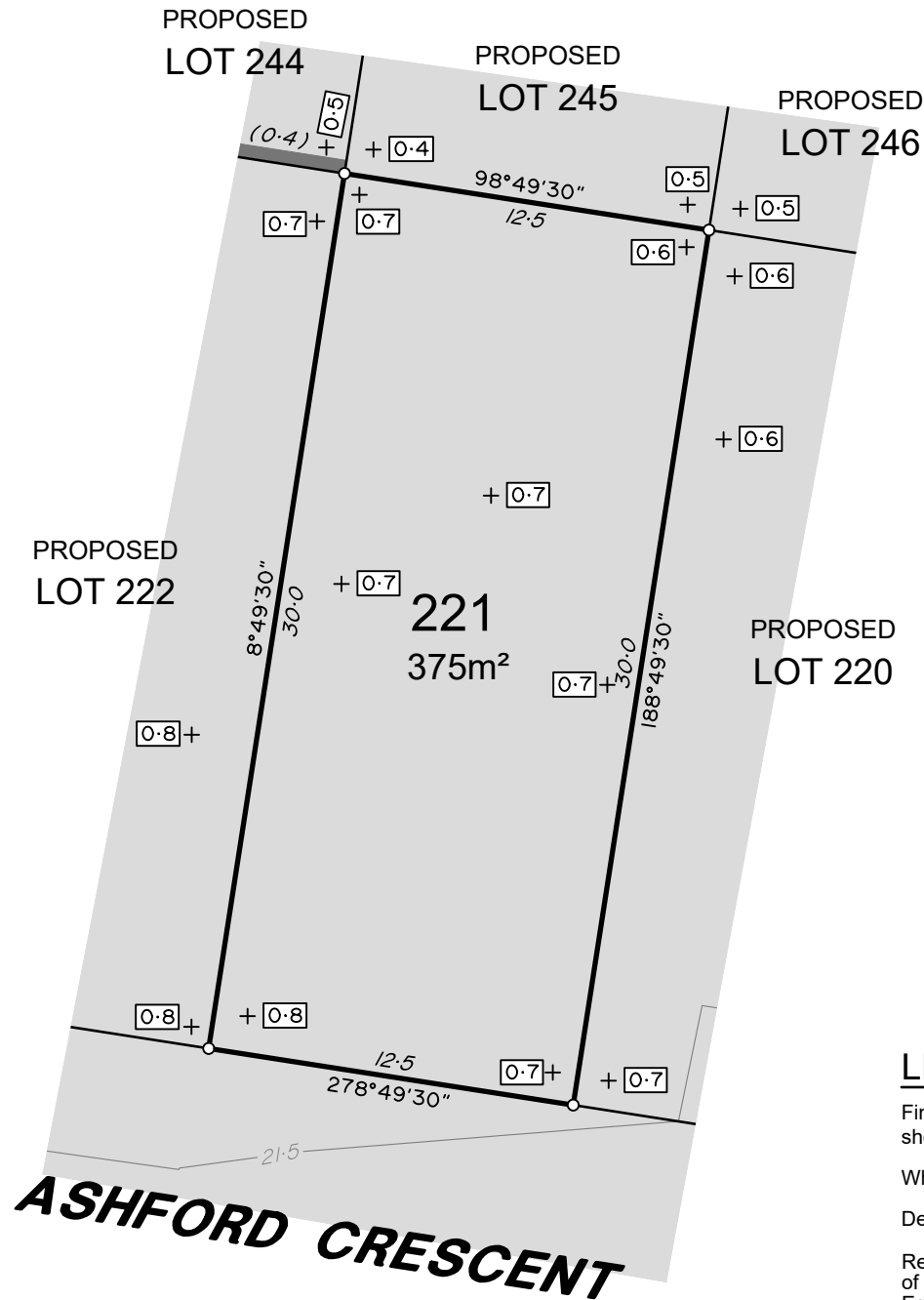
Where applicable, areas to be filled are shown as:

Depth of fill, in metres, shown as:- +0.5

Retaining wall and retaining wall height, shown on the lower side of the wall, have been calculated from digital data supplied by Egis and shown as:

(1.2)

0 12.5m 50 mm 25m 100 mm 37.5m 150 mm SCALE BAR



ADDITIONAL NOTES:

The LOT dimensions and area shown hereon are subject to final field survey and also to the requirements of Council and any other authority which may have requirements under any relevant legislation

Final surface contours shown hereon have been supplied by Egis.

Compaction of any fill material placed on this site shall be completed to level one inspection and testing services in accordance with AS3798-2007.

Depth of fill values are calculated to the lower of the pre-development surface and the ground surface from Survey.

Copyright © Veris Australia Pty Ltd August 2025

Lilywood Landings Stage 8 For Foreverlen Pty Ltd

IMPORTANT NOTES:

(These notes are an integral part of this plan)
This plan has been prepared for Foreverlen Pty Ltd for the purposes of A Disclosure Plan Under the Land Sales Act 1984 (as amended).
It is not to be used by any other person or corporation or for any other purposes and is subject to the following limitations:

Please refer to the approved Development Application for conditions relating to the LOT and to approved Operational Works drawings for services location and possible easements.

THESE DESIGNS AND DRAWINGS ARE COPYRIGHT AND ARE NOT TO BE USED OR REPRODUCED WITHOUT THE WRITTEN PERMISSION OF VERIS

Data Sources

Cadastral Boundaries: 401871-LC01-P.dwg
Engineering Design: X_22-000082_8_BASE-20250812.dwg
Final Surface Contours: 22-000082-5-12-Design-Contours-250mm-20250808.dwg
Depth of Fill: 22-000082-5-12-depth-contour-0.1m-20250808.dwg
Retaining Walls: X_22-000082_8_BASE-20250812.dwg

Issue	Revisions	Date	Drawn
B	Updated Engineering	12/08/2025	TEM
A	Original	6/02/2025	TEM

Locality: Lilywood
Local Authority: Moreton Bay C. C.
Horizontal Meridian: MGA, Zone56
Vertical Level Datum: AHD
Scale: 1:250 @ A4
Designed: Egis
Drawn: TEM 6/02/2025
Checked: DC
Plot Date: 08 Sep, 2025
Computer File Ref: 401871-S18-DP(B).dwg

DISCLOSURE PLAN
of Proposed LOT 221
being part of
Lot 12
on RP866105



veris

BRISBANE (07) 3666 4700 WHITSUNDAYS (07) 4945 6600

MACKAY (07) 4957 9700 CAIRNS (07) 4252 9400

veris.com.au
ACN 615 735 727
Veris Australia Pty Ltd

Drawing No 401871-DP221 Issue B

LEGEND

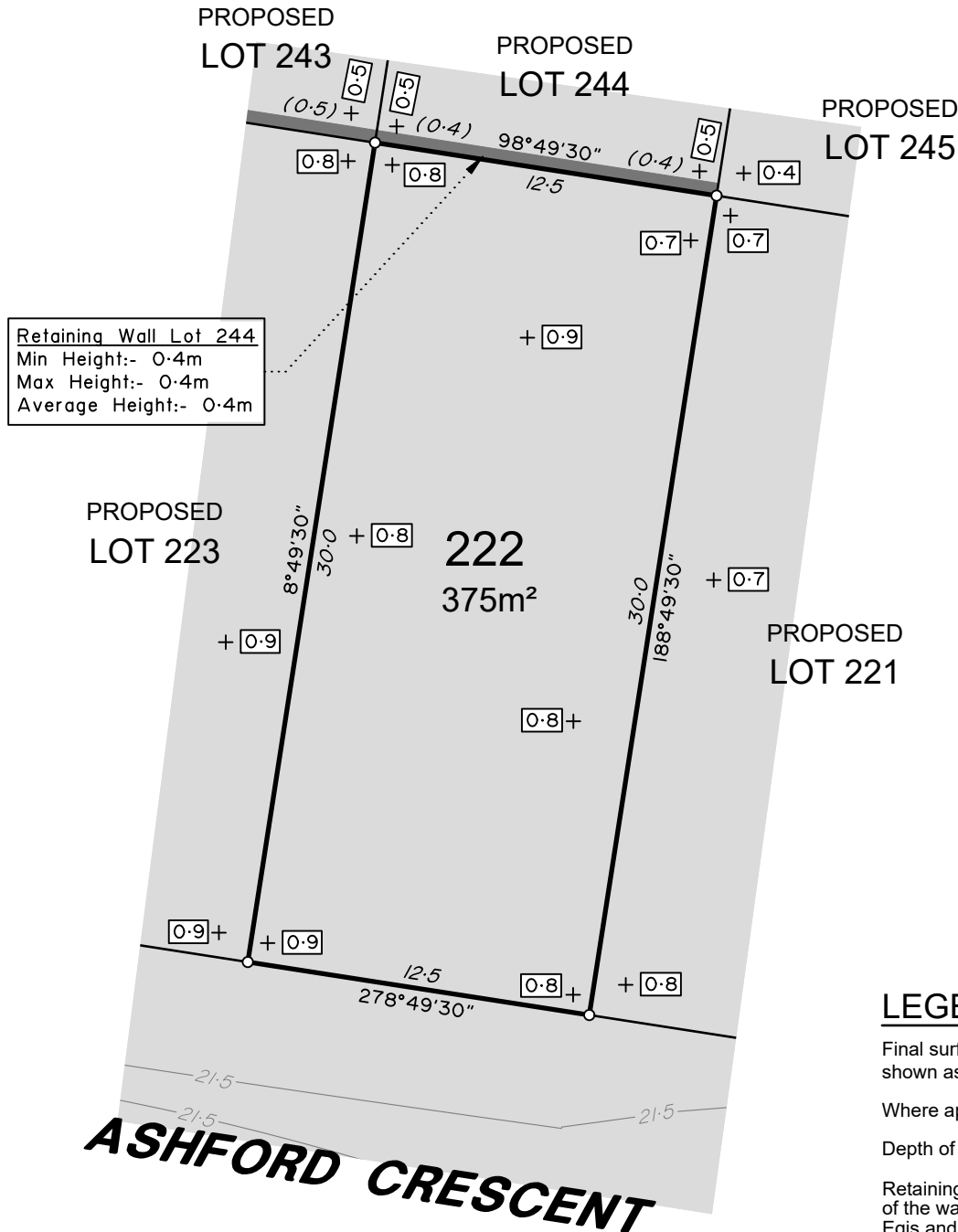
Final surface contours based on A.H.D. datum at an interval of 0.5m, shown as:

Where applicable, areas to be filled are shown as:

Depth of fill, in metres, shown as:-

Retaining wall and retaining wall height, shown on the lower side of the wall, have been calculated from digital data supplied by Egis and shown as:

0 12.5m 50 mm 25m 100 mm 37.5m 150 mm SCALE BAR



ADDITIONAL NOTES:

The LOT dimensions and area shown hereon are subject to final field survey and also to the requirements of Council and any other authority which may have requirements under any relevant legislation

Final surface contours shown hereon have been supplied by Egis.

Compaction of any fill material placed on this site shall be completed to level one inspection and testing services in accordance with AS3798-2007.

Depth of fill values are calculated to the lower of the pre-development surface and the ground surface from Survey.

Copyright © Veris Australia Pty Ltd August 2025

Lilywood Landings Stage 8 For Foreverlen Pty Ltd

IMPORTANT NOTES:

(These notes are an integral part of this plan)
This plan has been prepared for Foreverlen Pty Ltd for the purposes of A Disclosure Plan Under the Land Sales Act 1984 (as amended).
It is not to be used by any other person or corporation or for any other purposes and is subject to the following limitations:

Please refer to the approved Development Application for conditions relating to the LOT and to approved Operational Works drawings for services location and possible easements.

THESE DESIGNS AND DRAWINGS ARE COPYRIGHT AND ARE NOT TO BE USED OR REPRODUCED WITHOUT THE WRITTEN PERMISSION OF VERIS

Data Sources

Cadastral Boundaries: 401871-LC01-P.dwg
Engineering Design: X_22-000082_8_BASE-20250812.dwg
Final Surface Contours: 22-000082-5-12-Design-Contours-250mm-20250808.dwg
Depth of Fill: 22-000082-5-12-depth-contour-0.1m-20250808.dwg
Retaining Walls: X_22-000082_8_BASE-20250812.dwg

Issue	Revisions	Date	Drawn
B	Updated Engineering	12/08/2025	TEM
A	Original	6/02/2025	TEM

Locality: Lilywood
Local Authority: Moreton Bay C. C.
Horizontal Meridian: MGA, Zone56
Vertical Level Datum: AHD
Scale: 1:250 @ A4
Designed: Egis
Drawn: TEM 6/02/2025
Checked: DC
Plot Date: 08 Sep, 2025
Computer File Ref: 401871-S18-DP(B).dwg

DISCLOSURE PLAN
of Proposed LOT 222
being part of
Lot 12
on RP866105



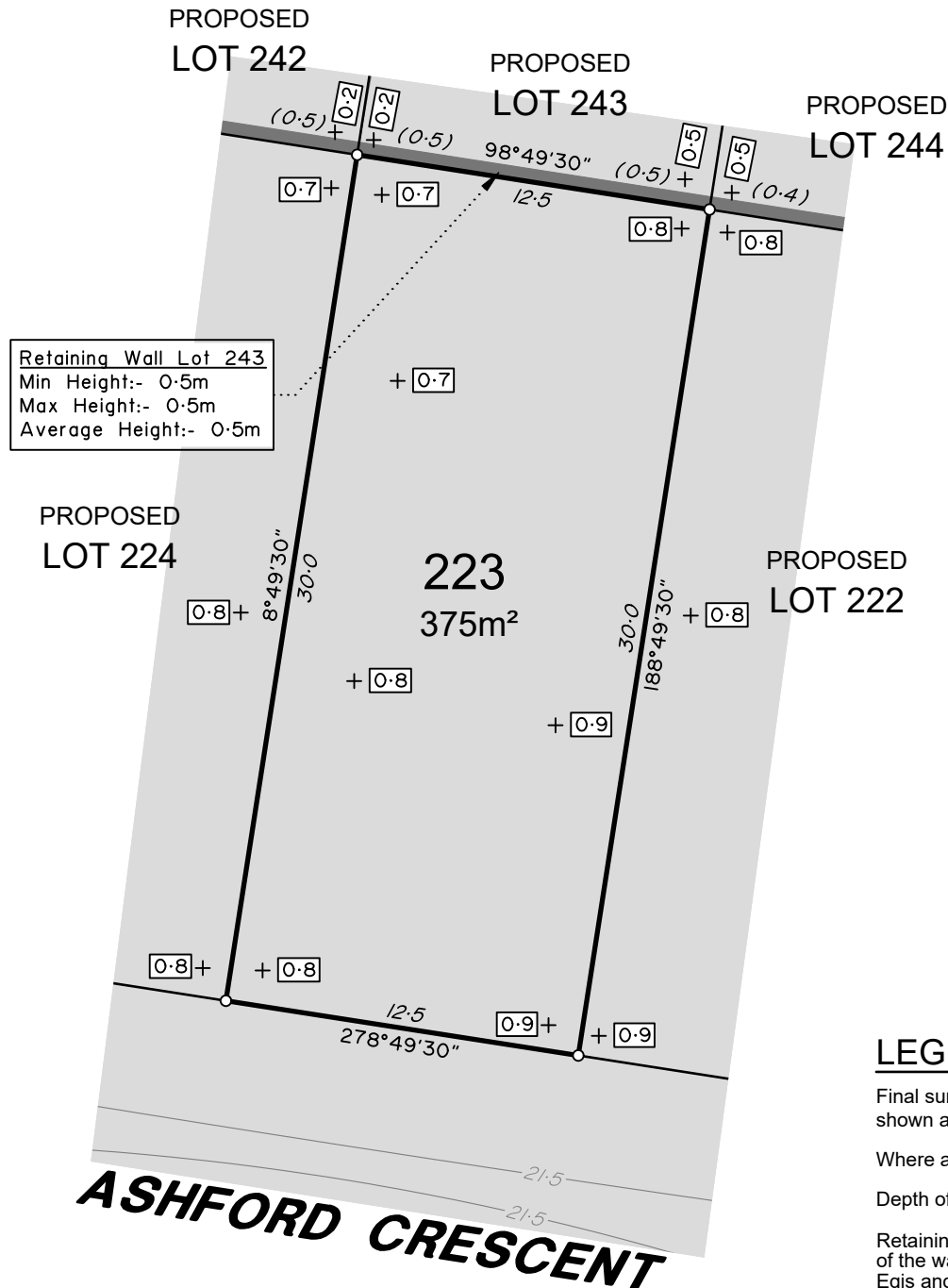
veris

BRISBANE (07) 3666 4700 WHITSUNDAYS (07) 4945 6600

MACKAY (07) 4957 9700 CAIRNS (07) 4252 9400

veris.com.au
ACN 615 735 727
Veris Australia Pty Ltd

Drawing No 401871-DP222 Issue B



ADDITIONAL NOTES:

The LOT dimensions and area shown hereon are subject to final field survey and also to the requirements of Council and any other authority which may have requirements under any relevant legislation

Final surface contours shown hereon have been supplied by Egis.

Compaction of any fill material placed on this site shall be completed to level one inspection and testing services in accordance with AS3798-2007.

Depth of fill values are calculated to the lower of the pre-development surface and the ground surface from Survey.

Copyright © Veris Australia Pty Ltd August 2025

Lilywood Landings Stage 8 For Foreverlen Pty Ltd

IMPORTANT NOTES:

(These notes are an integral part of this plan)
This plan has been prepared for Foreverlen Pty Ltd for the purposes of A Disclosure Plan Under the Land Sales Act 1984 (as amended).
It is not to be used by any other person or corporation or for any other purposes and is subject to the following limitations:

Please refer to the approved Development Application for conditions relating to the LOT and to approved Operational Works drawings for services location and possible easements.

THESE DESIGNS AND DRAWINGS ARE COPYRIGHT AND ARE NOT TO BE USED OR REPRODUCED WITHOUT THE WRITTEN PERMISSION OF VERIS

Data Sources

Cadastral Boundaries: 401871-LC01-P.dwg
Engineering Design: X_22-000082_8_BASE-20250812.dwg
Final Surface Contours: 22-000082-5-12-Design-Contours-250mm-20250808.dwg
Depth of Fill: 22-000082-5-12-Design-Contours-250mm-20250808.dwg
Retaining Walls: X_22-000082_8_BASE-20250812.dwg

Issue	Revisions	Date	Drawn
B	Updated Engineering	12/08/2025	TEM
A	Original	6/02/2025	TEM

Locality: Lilywood
Local Authority: Moreton Bay C. C.
Horizontal Meridian: MGA, Zone56
Vertical Level Datum: AHD
Scale: 1:250 @ A4
Designed: Egis
Drawn: TEM 6/02/2025
Checked: DC
Plot Date: 08 Sep, 2025
Computer File Ref: 401871-S18-DP(B).dwg

DISCLOSURE PLAN
of Proposed LOT 223
being part of
Lot 12
on RP866105

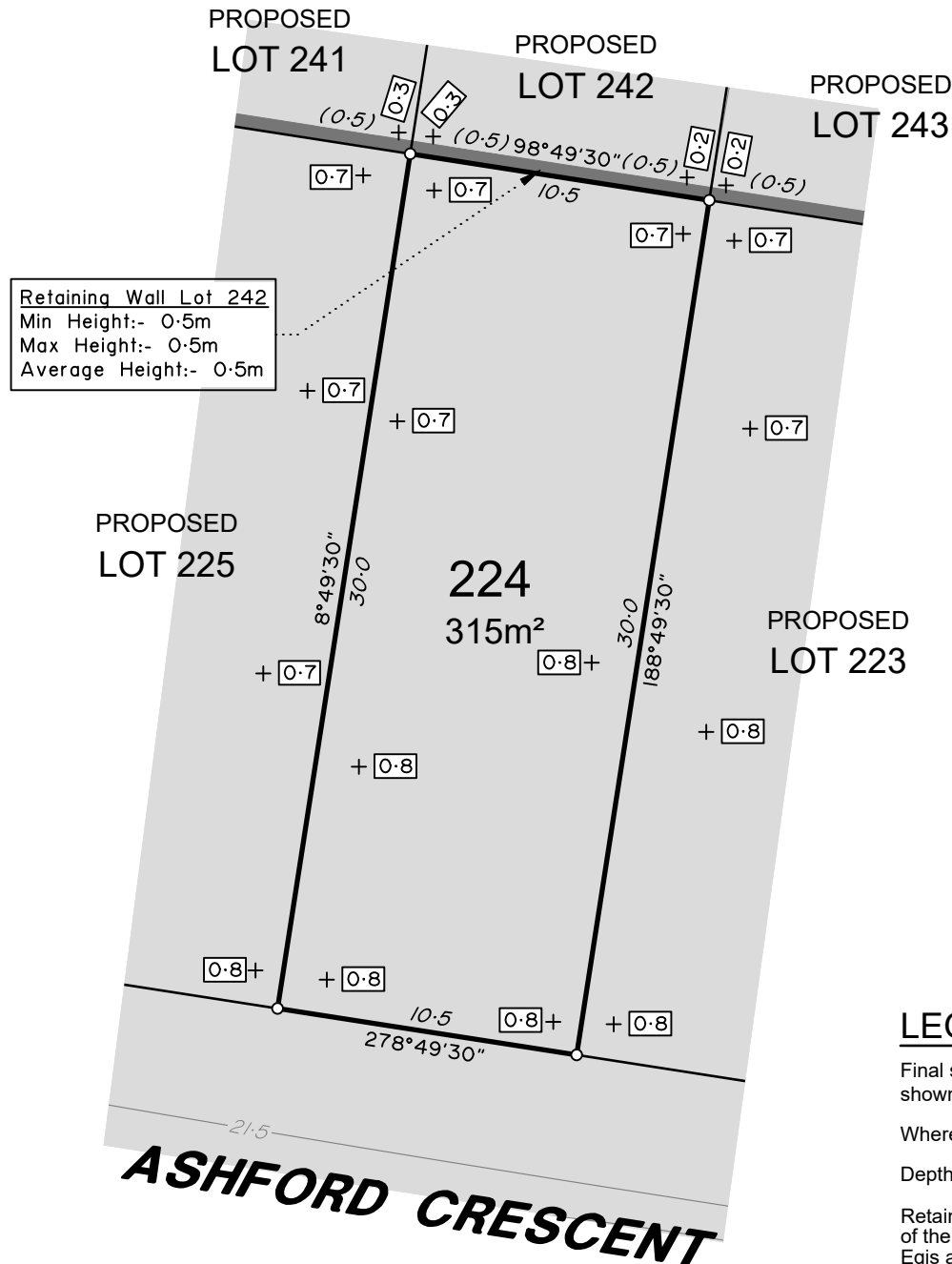


veris

BRISBANE WHITSUNDAYS
(07) 3666 4700 (07) 4945 6600
MACKAY CAIRNS
(07) 4957 9700 (07) 4252 9400

veris.com.au
ACN 615 735 727
Veris Australia Pty Ltd

Drawing No 401871-DP223 Issue B



ADDITIONAL NOTES:

The LOT dimensions and area shown hereon are subject to final field survey and also to the requirements of Council and any other authority which may have requirements under any relevant legislation

Final surface contours shown hereon have been supplied by Egis.

Compaction of any fill material placed on this site shall be completed to level one inspection and testing services in accordance with AS3798-2007.

Depth of fill values are calculated to the lower of the pre-development surface and the ground surface from Survey.

Copyright © Veris Australia Pty Ltd August 2025

Lilywood Landings Stage 8 For Foreverlen Pty Ltd

IMPORTANT NOTES:

(These notes are an integral part of this plan)
This plan has been prepared for Foreverlen Pty Ltd for the purposes of A Disclosure Plan Under the Land Sales Act 1984 (as amended).
It is not to be used by any other person or corporation or for any other purposes and is subject to the following limitations:

Please refer to the approved Development Application for conditions relating to the LOT and to approved Operational Works drawings for services location and possible easements.

THESE DESIGNS AND DRAWINGS ARE COPYRIGHT AND ARE NOT TO BE USED OR REPRODUCED WITHOUT THE WRITTEN PERMISSION OF VERIS

Data Sources

Cadastral Boundaries: 401871-LC01-P.dwg
Engineering Design: X_22-000082_8_BASE-20250812.dwg
Final Surface Contours: 22-000082-5-12-Design-Contours-250mm-20250808.dwg
Depth of Fill: 22-000082-5-12-Design-Contours-250mm-20250808.dwg
Retaining Walls: X_22-000082_8_BASE-20250812.dwg

Issue	Revisions	Date	Drawn
B	Updated Engineering	12/08/2025	TEM
A	Original	6/02/2025	TEM

Locality: Lilywood
Local Authority: Moreton Bay C. C.
Horizontal Meridian: MGA, Zone56
Vertical Level Datum: AHD
Scale: 1:250 @ A4
Designed: Egis
Drawn: TEM 6/02/2025
Checked: DC
Plot Date: 08 Sep, 2025
Computer File Ref: 401871-S18-DP(B).dwg

DISCLOSURE PLAN
of Proposed LOT 224
being part of
Lot 12
on RP866105



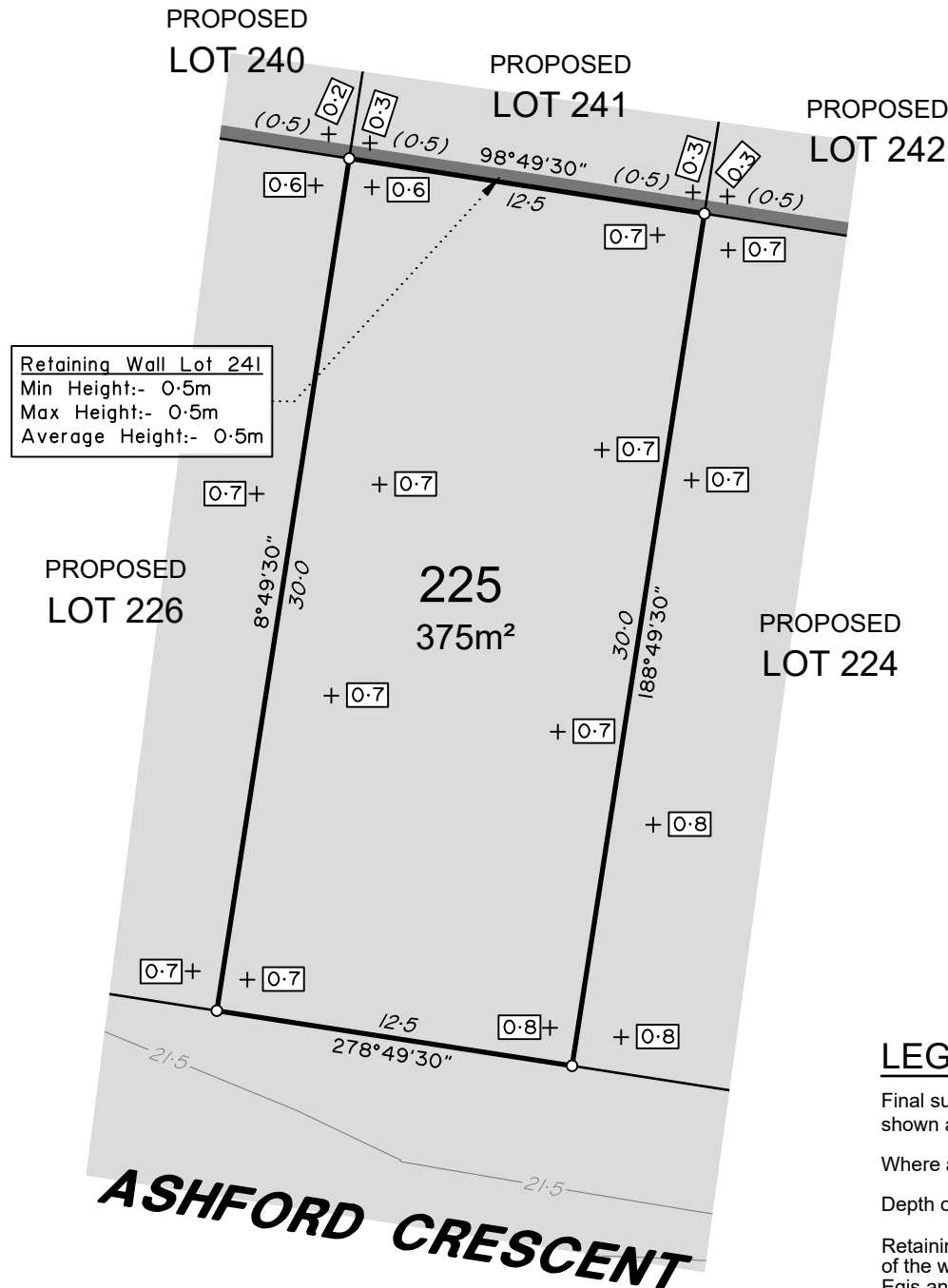
veris

BRISBANE WHITSUNDAYS
(07) 3666 4700 (07) 4945 6600

MACKAY CAIRNS
(07) 4957 9700 (07) 4252 9400

veris.com.au
ACN 615 735 727
Veris Australia Pty Ltd

Drawing No Issue
401871-DP224 B



LEGEND

Final surface contours based on A.H.D. datum at an interval of 0.5m, shown as: — 15.5 —

Where applicable, areas to be filled are shown as: [shaded area]

Depth of fill, in metres, shown as:- +0.5

Retaining wall and retaining wall height, shown on the lower side of the wall, have been calculated from digital data supplied by Egis and shown as: (1.2)

ADDITIONAL NOTES:

The LOT dimensions and area shown hereon are subject to final field survey and also to the requirements of Council and any other authority which may have requirements under any relevant legislation

Final surface contours shown hereon have been supplied by Egis.

Compaction of any fill material placed on this site shall be completed to level one inspection and testing services in accordance with AS3798-2007.

Depth of fill values are calculated to the lower of the pre-development surface and the ground surface from Survey.

Copyright © Veris Australia Pty Ltd August 2025

Lilywood Landings Stage 8 For Foreverlen Pty Ltd

IMPORTANT NOTES:

(These notes are an integral part of this plan)
This plan has been prepared for Foreverlen Pty Ltd for the purposes of A Disclosure Plan Under the Land Sales Act 1984 (as amended).
It is not to be used by any other person or corporation or for any other purposes and is subject to the following limitations:

Please refer to the approved Development Application for conditions relating to the LOT and to approved Operational Works drawings for services location and possible easements.

THESE DESIGNS AND DRAWINGS ARE COPYRIGHT AND ARE NOT TO BE USED OR REPRODUCED WITHOUT THE WRITTEN PERMISSION OF VERIS

Data Sources

Cadastral Boundaries: 401871-LC01-P.dwg
Engineering Design: X_22-000082_8_BASE-20250812.dwg
Final Surface Contours: 22-000082-5-12-Design-Contours-250mm-20250808.dwg
Depth of Fill: 22-000082-5-12-depth-contour-0.1m-20250808.dwg
Retaining Walls: X_22-000082_8_BASE-20250812.dwg

Issue	Revisions	Date	Drawn
B	Updated Engineering	12/08/2025	TEM
A	Original	6/02/2025	TEM

Locality: Lilywood
Local Authority: Moreton Bay C. C.
Horizontal Meridian: MGA, Zone56
Vertical Level Datum: AHD
Scale: 1:250 @ A4
Designed: Egis
Drawn: TEM 6/02/2025
Checked: DC
Plot Date: 08 Sep, 2025
Computer File Ref: 401871-S18-DP(B).dwg

DISCLOSURE PLAN
of Proposed LOT 225
being part of
Lot 12
on RP866105

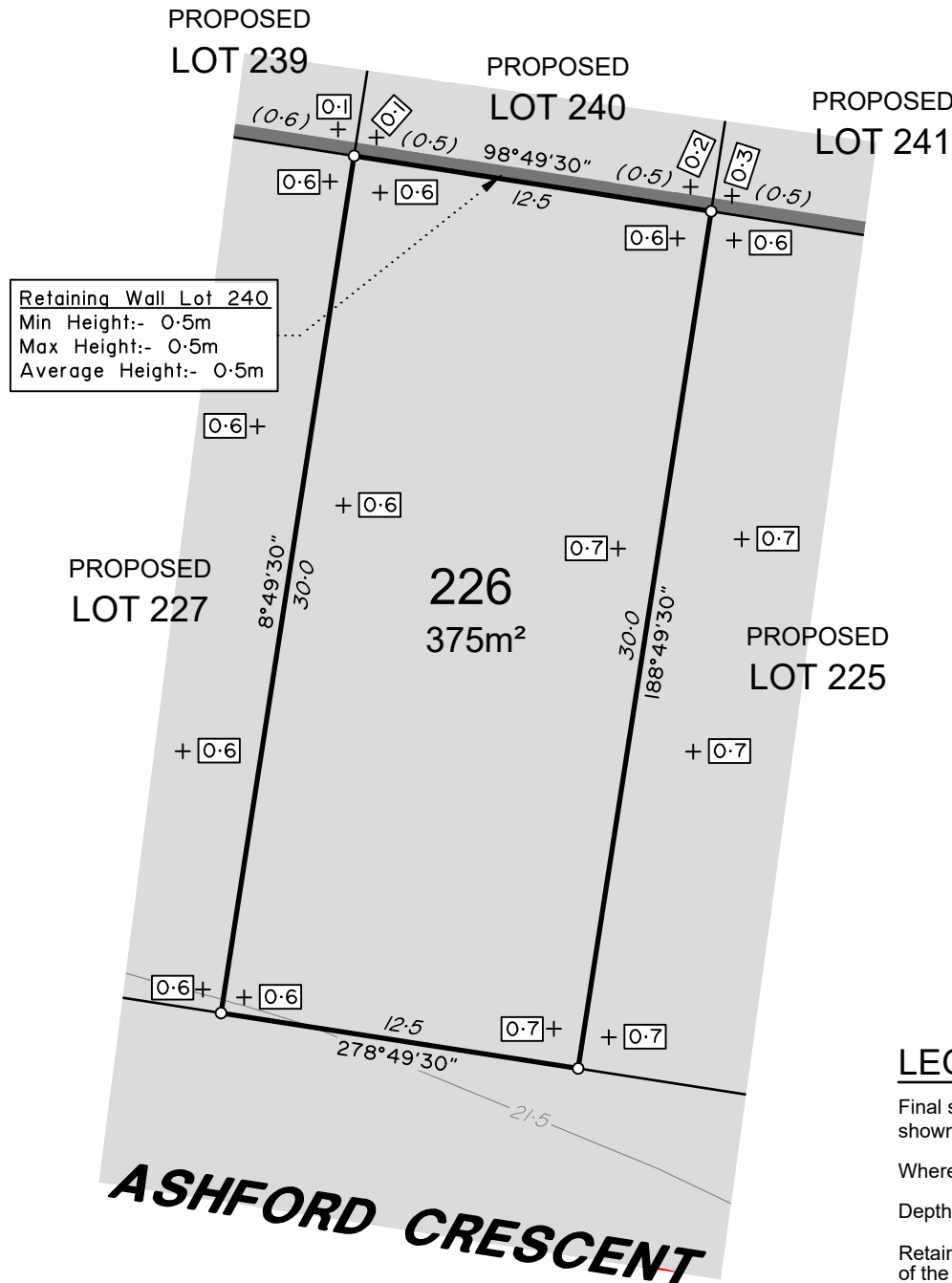


veris

BRISBANE WHITSUNDAYS
(07) 3666 4700 (07) 4945 6600
MACKAY CAIRNS
(07) 4957 9700 (07) 4252 9400

veris.com.au
ACN 615 735 727
Veris Australia Pty Ltd

Drawing No Issue
401871-DP225 B



ADDITIONAL NOTES:

The LOT dimensions and area shown hereon are subject to final field survey and also to the requirements of Council and any other authority which may have requirements under any relevant legislation

Final surface contours shown hereon have been supplied by Egis.

Compaction of any fill material placed on this site shall be completed to level one inspection and testing services in accordance with AS3798-2007.

Depth of fill values are calculated to the lower of the pre-development surface and the ground surface from Survey.

Copyright © Veris Australia Pty Ltd August 2025

Lilywood Landings Stage 8 For Foreverlen Pty Ltd

IMPORTANT NOTES:

(These notes are an integral part of this plan)
This plan has been prepared for Foreverlen Pty Ltd for the purposes of A Disclosure Plan Under the Land Sales Act 1984 (as amended).
It is not to be used by any other person or corporation or for any other purposes and is subject to the following limitations:

Please refer to the approved Development Application for conditions relating to the LOT and to approved Operational Works drawings for services location and possible easements.

THESE DESIGNS AND DRAWINGS ARE COPYRIGHT AND ARE NOT TO BE USED OR REPRODUCED WITHOUT THE WRITTEN PERMISSION OF VERIS

Data Sources

Cadastral Boundaries: 401871-LC01-P.dwg
Engineering Design: X_22-000082_8_BASE-20250812.dwg
Final Surface Contours: 22-000082-5-12-Design-Contours-250mm-20250808.dwg
Depth of Fill: 22-000082-5-12-depth-contour-0.1m-20250808.dwg
Retaining Walls: X_22-000082_8_BASE-20250812.dwg

Issue	Revisions	Date	Drawn
B	Updated Engineering	12/08/2025	TEM
A	Original	6/02/2025	TEM

Locality: Lilywood
Local Authority: Moreton Bay C. C.
Horizontal Meridian: MGA, Zone56
Vertical Level Datum: AHD
Scale: 1:250 @ A4
Designed: Egis
Drawn: TEM 6/02/2025
Checked: DC
Plot Date: 08 Sep, 2025
Computer File Ref: 401871-S18-DP(B).dwg

DISCLOSURE PLAN
of Proposed LOT 226
being part of
Lot 12
on RP866105

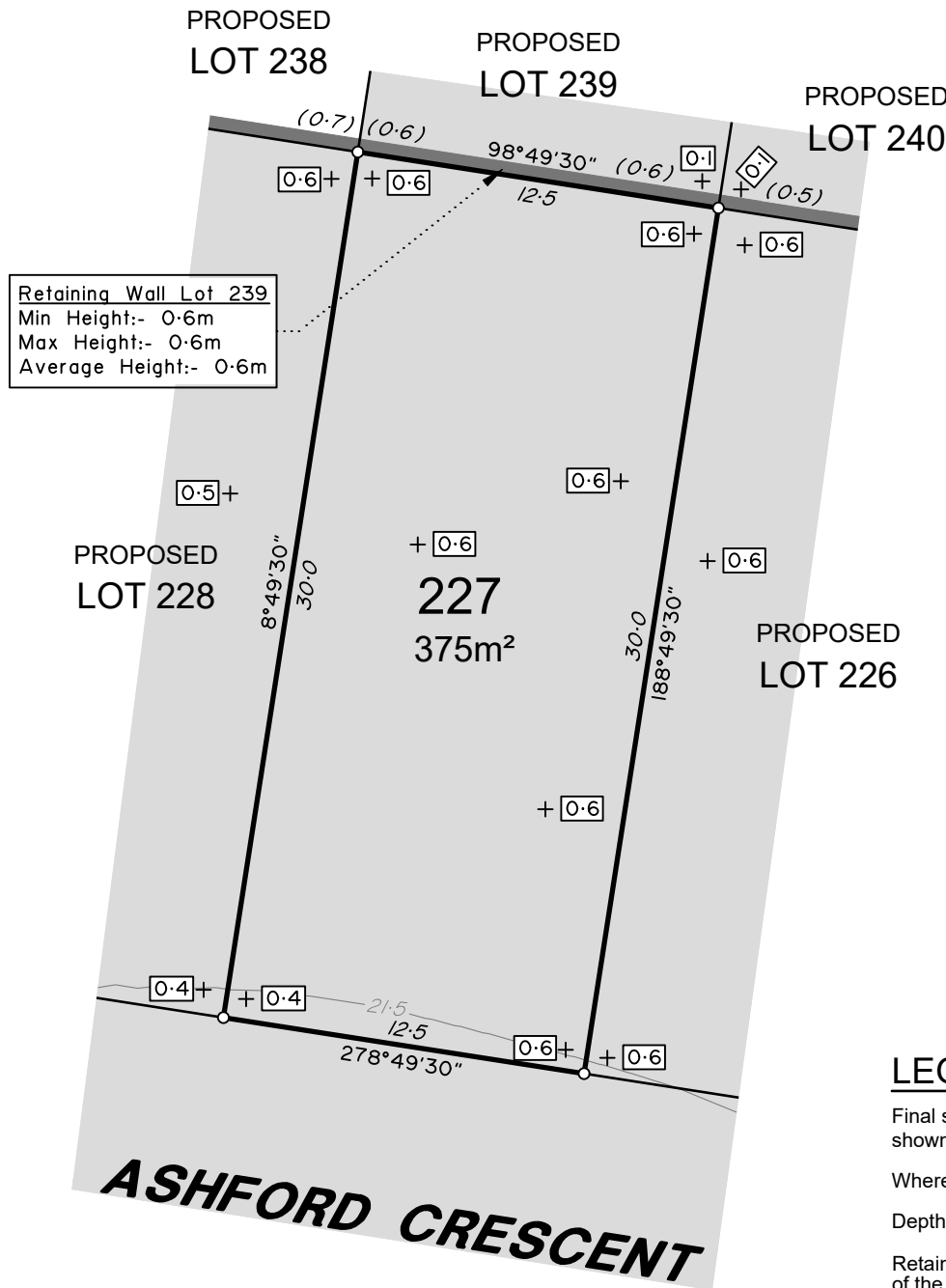


veris

BRISBANE (07) 3666 4700
WHITSUNDAYS (07) 4945 6600
MACKAY (07) 4957 9700
CAIRNS (07) 4252 9400

veris.com.au
ACN 615 735 727
Veris Australia Pty Ltd

Drawing No 401871-DP226 Issue B



ADDITIONAL NOTES:

The LOT dimensions and area shown hereon are subject to final field survey and also to the requirements of Council and any other authority which may have requirements under any relevant legislation

Final surface contours shown hereon have been supplied by Egis.

Compaction of any fill material placed on this site shall be completed to level one inspection and testing services in accordance with AS3798-2007.

Depth of fill values are calculated to the lower of the pre-development surface and the ground surface from Survey.

Copyright © Veris Australia Pty Ltd August 2025

Lilywood Landings Stage 8 For Foreverlen Pty Ltd

IMPORTANT NOTES:

(These notes are an integral part of this plan)
This plan has been prepared for Foreverlen Pty Ltd for the purposes of A Disclosure Plan Under the Land Sales Act 1984 (as amended).
It is not to be used by any other person or corporation or for any other purposes and is subject to the following limitations:

Please refer to the approved Development Application for conditions relating to the LOT and to approved Operational Works drawings for services location and possible easements.

THESE DESIGNS AND DRAWINGS ARE COPYRIGHT AND ARE NOT TO BE USED OR REPRODUCED WITHOUT THE WRITTEN PERMISSION OF VERIS

Data Sources

Cadastral Boundaries: 401871-LC01-P.dwg
Engineering Design: X_22-000082_8_BASE-20250812.dwg
Final Surface Contours: 22-000082-5-12-Design-Contours-250mm-20250808.dwg
Depth of Fill: 22-000082-5-12-depth-contour-0.1m-20250808.dwg
Retaining Walls: X_22-000082_8_BASE-20250812.dwg

Issue	Revisions	Date	Drawn
B	Updated Engineering	12/08/2025	TEM
A	Original	6/02/2025	TEM

Locality: Lilywood
Local Authority: Moreton Bay C. C.
Horizontal Meridian: MGA, Zone56
Vertical Level Datum: AHD
Scale: 1:250 @ A4
Designed: Egis
Drawn: TEM 6/02/2025
Checked: DC
Plot Date: 08 Sep, 2025
Computer File Ref: 401871-S18-DP(B).dwg

DISCLOSURE PLAN
of Proposed LOT 227
being part of
Lot 12
on RP866105

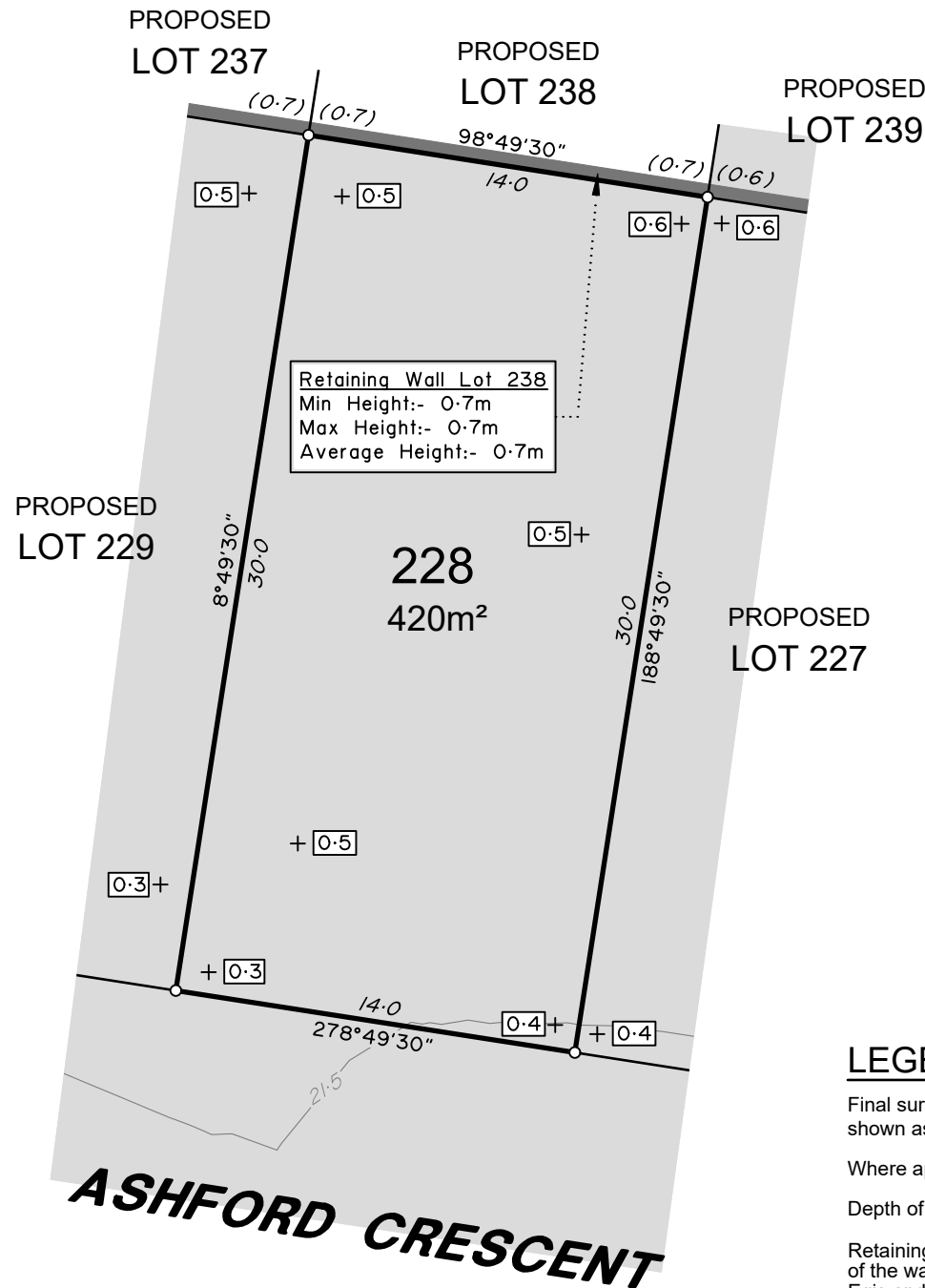


veris

BRISBANE (07) 3666 4700
WHITSUNDAYS (07) 4945 6600
MACKAY (07) 4957 9700
CAIRNS (07) 4252 9400

veris.com.au
ACN 615 735 727
Veris Australia Pty Ltd

Drawing No 401871-DP227 Issue B



ADDITIONAL NOTES:

The LOT dimensions and area shown hereon are subject to final field survey and also to the requirements of Council and any other authority which may have requirements under any relevant legislation

Final surface contours shown hereon have been supplied by Egis.

Compaction of any fill material placed on this site shall be completed to level one inspection and testing services in accordance with AS3798-2007.

Depth of fill values are calculated to the lower of the pre-development surface and the ground surface from Survey.

Copyright © Veris Australia Pty Ltd August 2025

Lilywood Landings Stage 8 For Foreverlen Pty Ltd

IMPORTANT NOTES:

(These notes are an integral part of this plan)
This plan has been prepared for Foreverlen Pty Ltd for the purposes of A Disclosure Plan Under the Land Sales Act 1984 (as amended).
It is not to be used by any other person or corporation or for any other purposes and is subject to the following limitations:

Please refer to the approved Development Application for conditions relating to the LOT and to approved Operational Works drawings for services location and possible easements.

THESE DESIGNS AND DRAWINGS ARE COPYRIGHT AND ARE NOT TO BE USED OR REPRODUCED WITHOUT THE WRITTEN PERMISSION OF VERIS

Data Sources

Cadastral Boundaries: 401871-LC01-P.dwg
Engineering Design: X_22-000082_8_BASE-20250812.dwg
Final Surface Contours: 22-000082-5-12-Design-Contours-250mm-20250808.dwg
Depth of Fill: 22-000082-5-12-depth-contour-0.1m-20250808.dwg
Retaining Walls: X_22-000082_8_BASE-20250812.dwg

Issue	Revisions	Date	Drawn
B	Updated Engineering	12/08/2025	TEM
A	Original	6/02/2025	TEM

Locality: Lilywood
Local Authority: Moreton Bay C. C.
Horizontal Meridian: MGA, Zone56
Vertical Level Datum: AHD
Scale: 1:250 @ A4
Designed: Egis
Drawn: TEM 6/02/2025
Checked: DC
Plot Date: 08 Sep, 2025
Computer File Ref: 401871-S18-DP(B).dwg

DISCLOSURE PLAN
of Proposed LOT 228
being part of
Lot 12
on RP866105



veris

BRISBANE (07) 3686 4700 WHITSUNDAYS (07) 4945 6600

MACKAY (07) 4957 9700 CAIRNS (07) 4252 9400

veris.com.au
ACN 615 735 727
Veris Australia Pty Ltd

Drawing No 401871-DP228 Issue B



PROPOSED
LOT 237

PROPOSED
LOT 238

PROPOSED
LOT 228

Retaining Wall Lot 229
Min Height:- 0.1m
Max Height:- 0.5m
Average Height:- 0.3m


Retaining Wall Lot 237
Min Height:- 0.7m
Max Height:- 0.7m
Average Height:- 0.7m


229
516m²

ROAD


HOLSTEIN LANE

LEGEND

Final surface contours based on A.H.D. datum at an interval of 0.5m, shown as: 

Where applicable, areas to be filled are shown as: 

Depth of fill, in metres, shown as:- 

Retaining wall and retaining wall height, shown on the lower side of the wall, have been calculated from digital data supplied by Egis and shown as: 

(1.2)

ADDITIONAL NOTES:

The LOT dimensions and area shown hereon are subject to final field survey and also to the requirements of Council and any other authority which may have requirements under any relevant legislation

Final surface contours shown hereon have been supplied by Egis.

Compaction of any fill material placed on this site shall be completed to level one inspection and testing services in accordance with AS3798-2007.

Depth of fill values are calculated to the lower of the pre-development surface and the ground surface from Survey.

Copyright © Veris Australia Pty Ltd August 2025

Lilywood Landings
Stage 8
For
Foreverlen Pty Ltd

IMPORTANT NOTES:

(These notes are an integral part of this plan)
This plan has been prepared for Foreverlen Pty Ltd for the purposes of A Disclosure Plan Under the Land Sales Act 1984 (as amended).
It is not to be used by any other person or corporation or for any other purposes and is subject to the following limitations:

Please refer to the approved Development Application for conditions relating to the LOT and to approved Operational Works drawings for services location and possible easements.

THESE DESIGNS AND DRAWINGS ARE COPYRIGHT AND ARE NOT TO BE USED OR REPRODUCED WITHOUT THE WRITTEN PERMISSION OF VERIS

Data Sources

Cadastral Boundaries: 401871-LC01-P.dwg
Engineering Design: X_22-000082_8_BASE-20250812.dwg
Final Surface Contours: 22-000082-5-12-Design-Contours-250mm-20250808.dwg
Depth of Fill: 22-000082-5-12-Design-Contours-250mm-20250808.dwg
Retaining Walls: X_22-000082_8_BASE-20250812.dwg

B	Updated Engineering	12/08/2025	TEM
A	Original	6/02/2025	TEM

Issue Revisions Date Drawn

Locality: Lilywood
Local Authority: Moreton Bay C. C.
Horizontal Meridian: MGA, Zone56
Vertical Level Datum: AHD
Scale: 1:250 @ A4
Designed: Egis
Drawn: TEM 6/02/2025
Checked: DC
Plot Date: 08 Sep, 2025
Computer File Ref: 401871-S18-DP(B).dwg

DISCLOSURE PLAN
of Proposed LOT 229
being part of
Lot 12
on RP866105



veris

BRISBANE WHITSUNDAYS
(07) 3666 4700 (07) 4945 6600
MACKAY CAIRNS
(07) 4957 9700 (07) 4252 9400

veris.com.au
ACN 615 735 727
Veris Australia Pty Ltd

Drawing No Issue
401871-DP229 B

0 12.5m 50 mm 25m 100 mm 37.5m 150 mm SCALE BAR